



Braishfield Village News

Summer begins under a canopy of oaks

The Braishfield Village Association produces and distributes the newsletter free to all residents of Braishfield and the neighbouring hamlets.
Available in colour online at www.braishfield.org



BRAISHFIELD GARDEN CLUB

SUMMER SHOW

**Braishfield Village Hall
Saturday 18 July 2pm to 4pm**

Show off your best

Got a prize-winning pumpkin, a show-stopping bake, or a stunning photo? It's time to share your talents.

Enter your best work across our fantastic categories: Flowers & Plants, Fruit, Vegetables, Flower Arrangement, Culinary, Art & Photography and special classes just for Children.

Ready to claim your bragging rights?

You can submit your entries **from early June using our online form** and secure your spot in this year's showcase. Let's make this summer unforgettable!

Enter here

e-voice.org.uk/braishfieldgardenclub



Or scan here

Notices



Editors Note

Please send all items for the Braishfield Village News by email: BVNeditor@gmail.com

All items for publication must show the name address and contact number of the originator.

Topics should be relevant to the village of Braishfield.



DEADLINE DATE for the next Braishfield Village News is Friday 24 July for the August Edition.

Communications



Your Email Network

A lot of important information is distributed via the Village Email Network. If you are not currently subscribed, please register your interest now and stay in the know. Send an email to:

braishfieldnetwork@gmail.com



Village Website

www.braishfield.org

Please could all organisations listed on the website check that their details are correct. In the event of any changes or amendments, contact Chip Mead at: chip.esq@gmail.com



Facebook Residents Forum

Ben Holdaway

www.facebook.com/groups/802698869862489

Bookings



Parish Council

www.braishfield.org.uk

Jane Ray

07902 297004



Church Room

Wendy Quarendon

01794 368015

BraishfieldChurchRoom@googlemail.com



Village Hall

Kate Knight

braishfieldvillagehall@gmail.com



Cover photo: Editors own, Common Hill Road

Braishfield Village Association Committee 2026

Chair

Julie Kemp

01794 368894

Vice Chair

Wendy Dolby-Stevens

01794 368119

Treasurer

Kate Marshall

07775 886152

Secretary

Ian Jeffery

01794 367282

BVN Editor

Paul Thorpe

07985 146765

Distributor

Julie Kemp

01794 368894

Committee Members

Jill Briggs

01794 367874

Chris Wyers

07901 677160

Carolyn Ward

01794 368852

This magazine is produced by Braishfield Village Association and the Editor reserves the right to elaborate, withhold or abridge material as space permits. The views expressed in this magazine are not necessarily those of the Editor or the committee. Any form of reproducing or copying of this publication requires the prior written permission of the Editor.
© Copyright 2026 Braishfield Village Association.

From the chair

As I sit writing this, the sun has finally come out, and if the forecasters are correct, it plans to hang around for at least the next 10 days or so.

What glorious weather to have for the Bank Holiday weekend and the half term holidays.

For the gardeners among us, I am sure you will agree that the changeable Spring weather has done nothing for our seedlings and summer bedding. Mine are a fraction of the size they should be and are crying out for a good dose of sunshine.

Fortunately, the Garden Club's Summer Show is some weeks away yet, allowing all of us plenty of time to get planting and hoping for some prize winning blooms.

For those of you that are new to the Village, you don't have to be a budding Monty Don to enter.

Just a love of plants, fruits and vegetables is all that is required, why not have a go and submit something already established?

If the garden isn't your thing, there are plenty of other classes including baking, flower arranging and arts and crafts.

It's not always the 'old timers' that win first prize. I speak from experience when I say that beginners luck is real!!

Put the date in your diary, Saturday 18 July. Hopefully see you there!

Bye for now, Julie.



Deadline Dates 2026

**Braishfield
Village News**

Friday 24 July
Friday 18 September
Friday 20 November

David Grace Obituary

David Grace, who died in November at the age of 94, had lived in Braishfield for 56 years. He grew up in Romsey and Timsbury and had many memories of being a young boy in WW2 when food was scarce and poaching, a pastime in which he was skilled, could add a treat to the dinner table.

After National Service on Thorney Island David became a plant operator and mechanic who worked on many Hampshire projects, including in Southampton Docks and on roads and motorways across the country. He loved engines, especially diesel engines and was therefore a useful person to have on site.

His hobbies included game shooting, sea fishing and sailing and he enjoyed many happy weekends with friends on boats he often owned in shared partnerships. Annual ferry hops to France with friends were opportunities to partake in lunch in a Channel port before filling the boot of a car with boxes of wine.

But Stone Cottage in Newport Lane was his great love, second only to Lesley, his wife of many years. It was the cottage he had dreamed of since childhood, and from there they hosted lively get-togethers for the family, especially on Boxing Day. He and Lesley enjoyed summer evening strolls to the Newport Inn and in later life he often recalled nostalgically how he and Lesley took moonlit walks around the village, often along Dummers Road, past the cricket ground and then return via Common Hill Road.

David was a character from a bygone age, one who, with advancing years, gained many friends around the village for his cheerful manner and willingness to chat - with everybody!

He will be sorely missed.



The BVA attempts to deliver a copy of the Braishfield Residents Guide and the Village Design Statement to all new residents. If you have not received these publications, please contact Julie, the Distributor, on 01794 368894.

Report from Cllr Sally Yalden, Borough Councillor



Test Valley
Borough Council 

After a busy few weeks, I now write this newly elected as Councillor and would like to sincerely thank everyone for encouragement and kind messages. It is a huge privilege to communities at Hampshire County Council, alongside my Valley Borough Council and Braishfield Parish Council.

With Local Government Reorganisation moving at pace, this role may also offer a glimpse into what the future of local government could look like, with councillors potentially taking on responsibilities currently split between borough and county councils. It will certainly be interesting to see how this develops over the coming months and years.

If residents are happy for me to do so, I intend for these updates to include matters relating to both Hampshire County Council and Test Valley Borough Council, as many of the issues affecting village life overlap across both authorities.

Planning Pressures Continue

At borough level, planning pressures remain a significant concern. Speculative applications are still coming forward while work continues on the new Local Plan, which will help shape where future development takes place across the borough.

The Borough Council is now progressing towards the next stage of the Local Plan process, known as Regulation 19, which is expected later this year. Until an updated Local Plan is formally adopted, these development pressures are likely to continue and remain challenging for many rural communities such as ours.

Highways, Potholes and Hampshire County Council

At Hampshire County Council, I recently attended my induction and quickly made a beeline for the highways team! Many residents quite rightly raise concerns about potholes, drainage problems and the state of our roads and verges, so this was one of the first areas I wanted to understand better.

I have been told I will soon have access to a digital highways portal which allows councillors to monitor pothole reports, road defects and updates on repair works. The system also includes information about roadworks, although I am still awaiting training so that I can use it properly and effectively.

Following the recent county elections, Hampshire County Council was under No Overall Control, meaning no single political group held an outright majority. However, at the Full Council meeting on 21 May, after a vote, Cllr Nick Adams-King was re-elected as Leader of the Council and a Conservative and Reform alliance has since been formed.

Children, Education and Planning

Within my own political group, I have been appointed to the Children and Young People Select Committee and the Education Advisory Panel. As a former teacher and educationalist, and someone passionate about supporting young people, I am very much looking forward to contributing to this work.

I have also joined the Regulatory Committee, which considers county-level strategic planning matters. Planning is an area I have developed a strong interest in through my work at borough level and one I am keen to continue learning more about.

Local Government Reorganisation - What Happens Next?

Officers have now received an overview of the draft Structural Changes Order (SCO), the legislation required to deliver Local Government Reorganisation. This will formally establish the new councils and set out transitional governance arrangements ahead of April 2028, including matters such as Joint Committees and interim governance structures.

Current proposals indicate that elections to the new unitary councils are likely to take place in May 2027 so, in short, we will find ourselves back at the ballot boxes again next year!

At this stage, we still do not know the final number of councillors per division, or the exact future ward arrangements affecting Braishfield and neighbouring villages. However, the current expectation is that areas such as Ampfield, Braishfield and North Baddesley could remain together, while Valley Park would fall within a different authority area. The wider proposed authority is expected to include the current districts of Test Valley, Winchester, East Hampshire and parts of the New Forest.

Wishing you all the very best.

Cllr Sally Yalden

Email: CllrSYalden@TestValley.gov.uk

Facebook: www.facebook.com/cllrsyalden

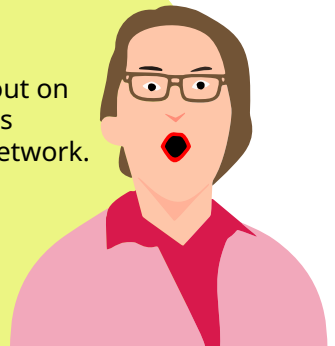
Phone: 07783 821561

Keep Connected ▶

Join the Village Email Network so you don't miss out on the important updates. A lot of vital village news is distributed exclusively via our Braishfield Email Network.

If you aren't already on the list, please email: braishfieldnetwork@gmail.com to sign up ...

... and stay in the know.





Greetings from Braishfield Primary School

It has been another busy half term in school. The children have been enjoying the opportunity to use the recreation ground during their lunch breaks and having the extra space to play in.

You may have spotted some of the older children (Oaks' class) out and about in recent weeks as they were taking part in the bikeability cycling proficiency course. We believe it is very important to develop children's wider life skills alongside their academic ones. We were very proud to see the progress the children made as a result of their hard work.



Our youngest children (Little Acorns' class) enjoyed an outing to the Sea Life Centre in Portsmouth this week. Having learnt about sea creatures, pollution and the environment they had a real sense of awe and wonder at seeing the creatures first-hand. Another highlight of this trip was enjoying an ice cream on the beach before the bus ride home.

Today, we have ended our half term with our annual Sports' Day on the recreation ground. This is a lovely way to celebrate as a school community and the children have certainly lived up to our school value of Be Your Best. Thank you to the wonderful staff, parents and of course the children for making these days so memorable and fun for everyone!

(Photographs from the day will be on our school newsletter on the school website soon).

Please do look out for further information on any upcoming events or celebrations on our school website and in our newsletters.

Best wishes,

Natalie Alldred, Headteacher





Social Contact Group

When we planned the date for a visit to the JLP cafe at Longstock it was timed to coincide with the daffodils in bloom. However, life is full of challenges and whilst two of us were able to drive along the usual route, shortly after the road was suddenly closed for roadworks. Meanwhile we're wondering where everyone was and they were having a tour around Test Valley on the diversion route. It was certainly a fun occasion creating another new memory!

Our next trip was a recent visit to Brambridge Garden Centre where we managed to avoid a hailstorm but it was an excellent opportunity for shopping.

It was a complete surprise to suddenly be the recipients of a very generous donation from Romsey & Chandlers Ford Round Table and we are extremely grateful.

If you would like to join our very friendly group please just give me a call on 01794 368339.

Hazel Prince
Chairman



We have been very busy in our joint Guide & Ranger unit and enjoyed lots of activities. We shared a craft and cake evening for Mums & Special People in March and in April we paraded with Romsey Girlguiding and Scouting in the St George's Day Parade which culminated in a service in Romsey Abbey. We have completed several badges including Mixology, Craftivism and Clean Planet which we started when we went on a visit to Lemon & Jinja (thank you Jess for making our evening so enjoyable).

We recently joined Lockerley Guides on their annual summer camp at Foxlease, Lyndhurst and the girls took part in tunnelling, raft building, zip wire, archery and fencing. We enjoyed two lovely campfires and sang lots of songs and enjoyed s'mores around the fire.

Our grateful thanks go to Counsellor Sally Yalden for supporting us through the Community Grant Scheme to build a cupboard to house all our Brownie and Guide equipment at the village hall, so no more diving under the stage every week to get everything out! We are grateful too to the Village Hall Committee for their donation, which together with a donation from our Brownie & Guide pots, enabled us to have the cupboard built by the Romsey Men's Shed - and a very fine job they have made of it!! Thank you once again to all concerned, especially Ian Jeffery for his patience with our schemes!

We are a very friendly group and have lots of exciting activities and opportunities to meet up with other local guide groups for camps etc. If you are aged between 10-18yrs and would like to come and join us, please email Jill Briggs at guides.braishfield@gmail.com. Alternatively, if you would be interested in becoming a Young Leader (14 to 17 years) within our unit, then please email us for further information. Duke of Edinburgh volunteer placements can also be completed in our unit. Adult volunteers also very welcome!



We've had a very busy time with the Brownie's ...

We joined 100's of other members of Girl Guiding to celebrate the 100th anniversary of World Thinking Day, held at Marwell Zoo. We paraded through Romsey with other Girlguiding and Scouting members for St Georges Day.

We've worked on the 'Grow your own' badge by competing against each other to see who can grow the tallest sunflower and design a garden. The Brownies really enjoyed completing their 'Space badge', to finish it off we visited the Winchester Science Centre & Planetarium, the staff were brilliant and we all received another badge.

Recently we had a 'May Fayre' where the Brownies, Guides and Rangers ran stalls. A very big thank you to all who came along and helped.

We would also like to add a very big thank you to Sally Yalden for all her support obtaining a grant to build a storage cupboard for our Brownie and Guide equipment. Also, a thank you to the village hall committee for their donation along with some of our funds, enabled us to have the cupboard built by Romsey Men's Shed and lastly a very big thank you to Jill our Brownie assistant leader and Guide Ranger Leader for pushing ahead with the project.

... and how about Rainbows?

We have been wondering if there would be any interest in having a Rainbow Unit in Braishfield?

It would run alongside our Brownie unit at Braishfield Village Hall on Wednesdays. If you have a daughter aged 5 to 7 who you think would enjoy joining, please register your interest by contacting me at:
brownies.braishfield@gmail.com

However, we can't offer this opportunity without your help, you don't have to commit to every week, it's incredibly rewarding, especially when you see them grow and move through the different units in Girlguiding.



Braishfield Garden Club

A User's Guide to Soils - On the evening Ray Broughton attended instead of Chris Bird, both Ray and Chris are regular speakers at our Club. Ray covered the make - up of soil, dealing with various types, composting, and how to get the most from your plot. Ray also explained that vinegar, salt or milk are now illegal and should not be used. This came into effect in 2015. Human sewage is now being used, very successfully commercially for growing crops in sewage blocks. Fibre pots can also be made of sewage. Groans from members. Tips - SHODDY - bags of hair ideal for breaking up clay. Wood ash good for compost bins. One of our gardens visits this year will be to Sparsholt College.

National Trust Mottisfont - A Rose garden paradise. Michael Harvey is the senior gardener at Mottisfont in charge of the Rose garden. He has worked with the National Trust for 10 years and been at Mottisfont for 3. Michael a very enthusiastic speaker spoke for 1½ hrs to an audience of 40, keeping all entertained. We are all familiar with our local National Trust property and it's history, becoming a National Trust property in the 1950's. The garden holds many rare roses all shown off by companion planting, plants used include peonies and geraniums. Use Sulphur Rose for blackspot, use before leaves come out then spray once a month. Feed a little seaweed with the Sulphur Rose. Many volunteers help keep the garden looking beautiful. Evening openings during June.

Members Garden Visits

Tuesday 16 June at 4.00pm
Ferns Lodge, Cottagers Lane, Hordle,
Lymington, SO41 0FE

Tuesday 14 July at 6.30pm
Sparsholt College, Westley Lane,
Sparsholt, Winchester, SO21 2NF
with Chris Bird

All details available on the Garden
Club website Events Calendar:

[e-voice.org.uk/
braishfieldgardenclub/calendar/](http://e-voice.org.uk/braishfieldgardenclub/calendar/)


BRAISHFIELD GARDEN CLUB
SUMMER
SHOW
Braishfield Village Hall
Saturday 18 July 2pm to 4pm

Photographic Competition
'Shadows or Plant/Flower'.
Entry details will be available from
early June using our online form
on the Garden Club website:
[e-voice.org.uk/
braishfieldgardenclub](http://e-voice.org.uk/braishfieldgardenclub)

Sheep Matter at Elm Grove

Lambing has come and gone; the first were born 10 days early and were triplets! It was chilly when the first arrived, but they didn't seem to mind and further triplets followed. Although we see new-borns every year, the wonder is that despite being so small they cope with life; but with care and a lovely woolly coat to snuggle into provided by their Mums and of course Kate the shepherd's care, they manage and are soon skipping around in the field with the others. Kate ended up with 134 lambs and they are now growing rapidly.

Now, all the lambs are enjoying life with their buddies, charging about in the fields, most especially in the evening sunshine which is a lovely sight. Kate will be monitoring their progress, watching for any problems, nipping them in the bud before they become bigger issues.

Currently, the sheep seem to have plenty of grass to eat, despite the lack of rain, which is really good. The top fields with long grass and no sheep are being left to grow to provide hay for the winter. If Kate had sheep in there at the moment, they would eat the grass now, leaving none for hay. Certainly, the ewes by the road seem to have their heads down eating grass most of the time; these are rather large looking last year's ewe lambs that Kate will use for breeding next time round. They are Lleyns.

I was looking for interesting facts about sheep and lambs to add to this article and I have chosen a few. There is more to sheep than meets the eye!

They recognise each other through a combination of visual cues, scent, and sounds allowing them to identify individuals, both human and other sheep, even after long separations. Apparently, they can remember up to 50 different sheep faces for over two years and use distinct vocal sounds to locate offspring or familiar flock members. Sheep have a highly developed sense of smell which is crucial for mother-lamb recognition and for them to find other members of their flock. We are all aware that voice recognition plays a vital part in their lives. Many is the time we are aware of distress being caused by ewe and lamb not knowing where each other are, then the joyful calling out when reunited. Sheep form strong bonds, remembering friends and avoiding familiar "bullies"; they will stay close by their friends and keep away from those who boss them around, just like us humans!

Wendy Quarendon



Braishfield Music & Drama Society

It's a Mystery...!

Given the huge popularity of the event in the last two years, BMADS are pleased to announce that they will be hosting another Murder Mystery, and delighted that the BVA have again offered to help with the organisation.

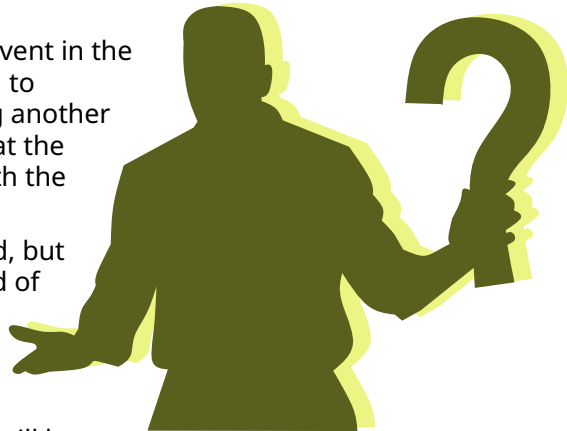
Exact details are still to be finalised, but this will take place on the weekend of

**Friday 6 November and
Saturday 7 November 2026.**

There will be two performances - which will hopefully mean that

everyone who would like to come will be able to secure a ticket - and these will likely be on the Friday and Saturday evenings.

More details will follow, but for now SAVE THE DATE!



Braishfield Village Voices

There's always a welcome for singers 'old and new' to this very informal group, meeting on the 4th Monday of a month, 2pm to 4pm in the Church Room.

If you enjoy singing, haven't sung for ages, or ever been told "You can't sing!" - we look forward to meeting you.

Summer dates 22 June, 27 July and 24 August - with refreshments and time for chat partway through the afternoon.

We look forward to seeing you - further details from **Meri** 07974 957092 or **Wendy** 01794 368015.



BUMS



Braishfield Ukulele Musical Society's next Sing Along is on Monday 15 June.

We will then be having a break for July and August and returning as usual on Monday 21 September. We start at 2.30pm for a Sing of some of the favourite songs from the 60's and earlier, also well known songs from musicals accompanied by Ukulele's. We then join together for Tea, Coffee and Biscuits finishing at 4pm.

All are welcome to come along to this fun, friendly group, you don't need to be able to sing or play an instrument just come and enjoy.

Our Sing Alongs take place at All Saints' Church Rooms in Braishfield. We are also booked up for local Care Homes and groups in the area in the coming months, if you would like us to meet at your venue, please get in touch with jhldalton@hotmail.com

Braishfield 200 Club

Two more winners in our village lottery in April and May: Tony Lowe and the Macleods. We made donations to the village United Reformed Church and the local branch of the Jumbulance Trust. Both were suitably grateful, the Trust especially because fund raising is really difficult at present. If you can afford £5 or £10 monthly, you would swell our monthly donations and cash prizes. Think about it?



If, over the summer months you will be taking part in some fund-raising event, let me know and we'll see if we can offer some financial support. You'll need to take part, not necessarily win the whatever it is: half marathon, hot dog eating, knitting a twenty foot scarf - however daft, so long as it's in aid of charity!

David Robinson, 01794 368774.

Braishfield Village Pantry



As summer arrives, the Pantry is full of seasonal favourites and fresh local produce. Alongside our ever-popular sausage rolls, homemade scones and vegetarian pastries, we are now serving a delicious range of summer salads - perfect for lighter lunches in the warmer weather.

We are also delighted to welcome a wonderful new local supplier, Otties of Stockbridge, who are providing us with their delicious creamy yoghurts and kefir. Their products have already proved very popular with customers, and we are thrilled to support another fantastic local business.

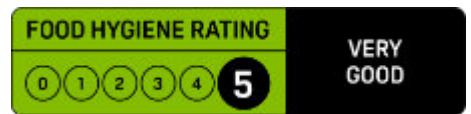
For those planning summer gatherings and family barbecues, we have plenty of sausages available, along with a lovely selection of fresh summer fruits and local sparkling wine.

Recently, we were pleased to host a group of ladies from The Trefoil Guild for lunch. Everyone thoroughly enjoyed the afternoon, and it was lovely to welcome them to the Pantry.

With the upcoming Romsey Beer Race approaching on Sunday 7 June, the Pantry will be open for drinks and snacks, so do pop in if you are out enjoying the event.

This week also saw the introduction of our new EPOS system. Our volunteers have coped brilliantly with the change and we are very grateful for all their hard work and customer patience while we learn the new system. A big thank you also goes to Andy who has spent hours setting it up, teaching everyone how to use it and sorting it out when something goes wrong.

We are proud to announce that following our recent hygiene inspection from Test Valley, we were awarded the highest possible rating of 5 stars - a wonderful achievement for all involved.



June is a particularly special month for us as we celebrate 10 years since the Pantry first opened its doors. Celebrations will take place on Thursday 11th June with an evening for volunteers, old and new, followed by a community celebration on Saturday 13th with entertainment and food for everyone. We look forward to marking this important milestone with all our customers, volunteers and supporters.

As always, we warmly welcome new volunteers. If you are interested in helping in any way, please contact us at braishfieldpantry@gmail.com or simply pop in for a chat - we would love to hear from you.

Debbie Sykes



Braishfield Pantry

10 Years of Togetherness



Thursday 11th June: 5-8pm

Invitation for all volunteers old and new
to come for evening refreshments

Saturday 13th June - 10am -

3pm

Everyone welcome to celebrate 10 years
of our community shop!



All Saints' Church Braishfield



Dates for your diary

Everyone is welcome to our special events...

- BBQ – Saturday 15 August
- Hymns and Pimms at the Social Club – Sunday 20 September
- Harvest Supper - Saturday 3 October
- Carols on the Rec – Friday 19 December

Churchyard Working Party

Saturday 5 September 9.30am with refreshments. Please bring your tools. We do hope you can join us!

More information: www.asbchurch.org
or contact Jane Bennett on 01794 368109

Farley Chamberlayne Green Lanes Challenge Cup

On the morning of Saturday 16 May, stalwart parishioners from Farley Chamberlayne set off in different directions from St Johns, clutching bin-bags for the inaugural F.C.G.L. Challenge: to clean up local lanes.

The threatening rain not diminishing enthusiasm in any way. Two hours later, with bags filled to varying degrees, everyone reconvened in the church for the great weigh-in to see who would win the re-purposed Miranda Neame Challenge Cup (formerly for the F.C. flower show). As it happened, the scales failed to perform, but it was unanimously agreed that Team McClachlan were run-away victors with their two bags and hunks of metal. This herculean effort was especially noteworthy as Sue was hampered by a broken hand!

We all enjoyed a picnic in the church together, washed down with lovely hot tea and coffee, for which many thanks go to Hannah. It was noted that the



lanes are in fact very green at this time of year regardless of litter – so this event might be brought forward in 2027, to a time when litter is more visible. Credit should also go to the Rawson-Smith family, who pick up litter year-round, without the lure or glory of winning a trophy for it! Trees are at their greenest and there is still the hope of warmth and being outdoors for months to come.

From Rev. Canon Jane ...

I love June! It maybe just me, but personally June is one of the most hopeful months of the year! The weather is warming up, the days are at their longest, the trees at their greenest and there is still the hope of warmth and being outdoors for months to come.

For our youngsters, those in year 6 have finished their SATs - the fun of their last half term at primary school in full-swing: trips, sports day, the school fête and the time to cement those long-standing friendships. All this activity alongside the excitement - and natural nervousness, building towards September's next step.

Our older young people have finished university exams - and are heading home for long summer - and undoubtedly jobs to supplement their next academic year; while, of course, our teens are still head-down, with GCSEs and A' levels in full-swing ... sadly often with warm weather, that they can't enjoy... quite yet ...

Wherever we sit in the generations, summer is a season when life blossoms, when we get to live "life to the max", and there is hope.

As I write we are still in the Easter season, between Ascension Day and the celebrations of Pentecost. Pentecost is when Jesus was back with his Father and his Spirit, the Holy Spirit was sent by God to us, to be a constant, continual presence alongside. A presence with us, beside us, in the good times and the tough... with us during the exams, as well as in the celebrations and long summer after!

I pray too that your summer is hope-filled - with a sense of God's presence with you and, during this beautiful summer month, may you experience life in all its fullness, "life to the max".

God bless,

Jane

Rev. Canon Jane Thompson



Braishfield United Reformed Church

News from Braishfield URC

Braishfield United Reformed Church is part of the Southern Fellowship cluster of URC churches, which includes our sister church at Romsey and others in the Southampton area. It was Braishfield's turn to host the Southern Fellowship Anniversary Service and we did so on Saturday, 9 May. The church was packed, which is always great to see.

The tea, cake and other refreshments also went down well after the service. Many thanks go to Sharon Whitfield for booking the Community Room in the Village Hall and to Joan Glister, Jack Batchelor, and all of the helpers for all their work with the catering. Also thanks go to Daniel Symes for organising the music for the service.

June is a special month for us as we have our Church Anniversary Service during it. We will be holding our Anniversary Service on 14 June. We will be the grand old age of 208.

We've had to move our Favourite Hymns Service to Sunday, 21 June so there is still time to come and join us for a great big sing! We hope to see you there.



Looking further ahead, our Flower Festival service will be on 19 July and is always a colourful spectacle. If you've not seen Braishfield URC in full bloom for this, you are missing a treat and I'd urge you to come if you can. The church always looks wonderful. Just to give you an idea, please see the pictures from a couple of years ago.



For more details please contact:

The Ministers

The Reverend
Mike Perrot MA
01794 512163

The Reverend
Dr Sarah Hall
02380 262803

Church Secretary/Elder

Shirley Smith
01794 368447

Elders

Allison Symes
02380 262803
Sharon Whitfield
01794 328853



Hants and W.Berks Jumbulance Group Update

Our two 7 night holidays this year are a return to the fully accessible Atherfield Green Farm Holiday Cottages with our own caterer, near Chale on the Isle of Wight in July and to the new to us, fully accessible Merton House Hotel, Ross on Wye in September. Interestingly for a comparison, a commercial accessible holiday company Limitless also uses this hotel and charges nearly £4,000 for 7 nights – We do not because the one to one care (and sometimes 2 to one care) is given by volunteers who pay their own hotel fees etc.

Each holiday has days out in the Jumbulance to new destinations (or an option to stay in for a quieter day midweek) and entertainment is provided by us or the venue in the evenings. We have an excellent lead volunteer nurse and carers. Both holidays are full with 10 new people coming this year as sadly inevitably each year some of our older VIPs die and we can offer new people the experience. We are taking 20 people to the IoW and 30 people to Ross on Wye and have the hotel to ourselves with beautiful accessible rooms.

March was busy with our Spring meeting and lunch at the Wheatsheaf with the Romsey may Russell Theron supporting us and also our first Curry and Quiz Night at the Dog and Crook which with donations raised over £1,500. This month I have been busy giving talks and we were at the Romsey Dementia Action Group Awareness Day on 17 May at Crossfield Hall. Also in May we have two events – A Jumbulance on show in Swindon on Monday 25 May and we are doing the Teas and a Bottle stall for the big Woolton Hill and Highclere Village Market near Newbury on Sat 30 May. It should be a good fundraiser as over 60 stalls and Pony Rides etc

Thank you for the continued support of the Pantry / Community Shop and the Dog and Crook and Wheatsheaf where we have Collection boxes. Thank you also to the Braishfield 200 Club who gave us a generous donation recently. We really appreciate this local support and are actively looking for regular sponsorship of our group to ensure that it continues into the future.

We will be having a Summer lunch Reunion and Tea party in August. Date TBA.

For information contact Chris Chisholm 01794 368120 or 0788 774 8224 Email cookchriss@aol.com or the Jumbulance Trust www.jumbulance.org.uk for nationally run European holidays later this year to Southern Ireland and Lourdes in the Pyrenees.

Chris Chisholm

Affiliated to the Jumbulance Trust:
registered charity No. 1090731





Susanne Boswell Open Garden

Susanne Boswell will be opening her Awbridge garden near Romsey for the public to raise funds in support of the spinal injuries charity, Horatio's Garden.

Please Note: This is a ticket only event available and sold through the Horatio's Garden website www.horatiogarden.org.uk/fevents/susanne-boswell-garden-design-open-garden

Tickets are £12.75 each in advance with a maximum of 20 people per day.

When

Wednesday 10 June 2.30 to 4pm
buytickets.at/horatiogarden/2225943

Tuesday 16 June 10.30am to 12pm
buytickets.at/horatiogarden/2225995

Thursday 18 June 6 to 8pm
buytickets.at/horatiogarden/2226006

Where

Old Bush
Newtown Road
Awbridge SO51 0GJ

The post code won't bring you direct to the door! Instead we are directly opposite the bottom of Doctors Hill, first house on right off A27.

The Garden

There are herbaceous borders, paths, views and vistas. There is a formalised 'Secret Garden', a woodland walk and a woodland edge stream. We have a vegetable garden and lawns.



IN AID OF

Horatio's
Garden
South West



Visitor Information

- Please read the safety notice when booking your ticket online
- The guided tour usually lasts about an hour to hour and a half
- Booking and payment in advance only - no money taken at the gate
- A summery cordial drink or water will be on offer
- Sturdy shoes advisable - some of the walk is on the lawns
- Regret there is no wheelchair access into the woods
- Parking is limited (on the road only)
- Regret that there are no facilities

Susanne - www.susanneboswellgardens.com

Keep the heart of Braishfield beating



Braishfield Village News has shared the stories, events and key milestones that make our village feel like home. From regular events to celebrating our organisations and clubs, we strive to keep everyone connected.

But we can't do it without you?

Remember, Braishfield Village News is FREE so as a community-run publication, we rely on reader donations and supporting local businesses via advertising to cover printing costs annually. This printing cost amounts to £6.50 per household, but we face an average shortfall of £2 per recipient annually.

Help by donating

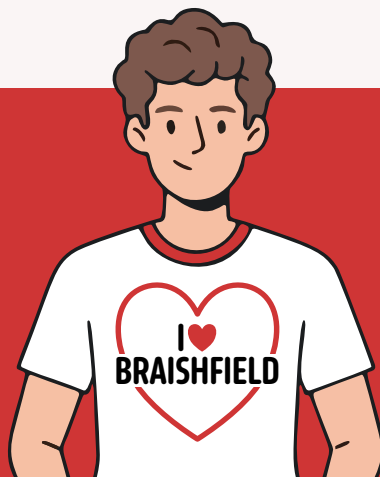
If you enjoy reading these pages, please consider donating a small contribution to keep us going. This can be a one-off payment or a monthly standing order.

Donation details

- Account name: Braishfield Village Association
- Sort code: 30-97-14
- Account No: 31483060

Your donation helps and ensures a copy reaches every resident in the village

Thank you on behalf of the Braishfield Village Association



The digital world - is it a challenge?

While 95% of UK adults navigate the internet comfortably, a significant digital divide persists.

As banks shutter high-street branches and GP surgeries transition to online triage, the offline population faces severe exclusion from essential services.

This issue disproportionately impacts older generations, as evidenced by recent data:

The Connected Gap: Only 86% of UK adults aged 60+ are online, compared to nearly 100% of younger demographics.

The Offline Household: Ofcom reports that 6% of UK households lack home internet; notably, 83% of this group are aged 65 or older.

Proxy Reliance: Among those without internet, 42% rely on friends or family to manage healthcare or shopping tasks on their behalf.

For many, the barriers are not just about interest. Roughly 38% find modern interfaces too complex, while 25% cite the high cost of broadband and devices. Physical challenges, such as deteriorating eyesight or reduced motor control, also make smartphone use frustrating.

To overcome these hurdles, several pathways are available:

Community Hubs: Charities like Age UK provide jargon-free "digital inclusion" projects, offering classes where older learners can practice at their own pace.

Social Tariffs: Many telecom providers now offer "social tariffs" - discounted broadband packages specifically for low-income households to lower the entry cost.

Voice Technology: For those struggling with touchscreens, smart assistants (like Alexa or Google Assistant) allow users to set reminders, check news, or contact family using simple verbal commands.

Inclusive Design: There is growing pressure on the public sector to maintain "offline" alternatives, such as telephone hotlines, while designing websites with larger fonts and intuitive layouts.

Digital evolution must not equate to social isolation. By combining community-led support with affordable technology and accessible design, the UK can ensure its older generation is empowered rather than left behind.



This is a **BVN Editor Hobby Horse Article** brought to you by the use of Artificial Intelligence. *I'd love to hear your feedback.*

According to Google

In the UK, the 2026 summer solstice falls on **Sunday, June 21**, marking the longest day and shortest night of the year.

The astronomical event peaks at exactly **09:24 am BST**.

Key Celebrations & Local Information:

- **Stonehenge:** The most famous celebration happens at Stonehenge in Wiltshire, drawing thousands for overnight access leading into the sunrise.
- **Planning:** English Heritage grants free managed open access to the monument, spanning the evening of Saturday, June 20, into the morning of Sunday, June 21.
- **Travel:** Vehicle parking at the site must be pre-booked in advance, or you can use dedicated shuttle buses departing from nearby Salisbury.

Event Details & Access:

Check the full schedule, safety guidelines, and parking availability directly via the English Heritage Stonehenge Visit page www.english-heritage.org.uk/visit/places/stonehenge/things-to-do/solstice/summer-solstice-2026



In case of emergency



Electricity

Phone 105 or SSE on 0800 072 7282. Report or check a power cut powertrack.ssen.co.uk/powertrack

If you require special assistance call SSE on 0800 294 3259 to register for Priority Services.



Water

Supply or waste water emergencies, blocked drains or possible pollution. Phone Southern Water on 0330 303 0368.



Police

Phone 101 or 999 if people are injured or there is a threat to life.



Community Emergency

Cllr Jane Bennett 01794 368109 or 07823 320910.

ADVERTISE HERE



Email us at
BVNeditor@gmail.com
for our advertising rates

POP-UP MARKET 2026
ROMSEY COUNTRY MARKET

LAST SATURDAY OF THE MONTH

LAST SATURDAY | 10.30 AM TO 12.30 PM | BRAISHFIELD VILLAGE HALL



You can't get more local than
Romsey Country Market
A local co-operative community market where
everything is GENUINELY HOME PRODUCED

2026 Market Dates

Romsey Town Hall Market & Community Café
2nd and 4th Friday of a Month 10.30-12.30

12th & 26th June
10th & 24th July

Braishfield Village Hall, Braishfield, SO51 0PN
Last Saturday of a Month 10.30-12.30

27th June
25th July
28th Aug

Romsey Market at The Corn Exchange
1st Saturday of a Month 8.30-3.00

6th June
4th July
1st Aug

You can also find us at
The Beggars Fair 11th July, 11am to 5pm
Nonesuch Fete 31st Aug, 12pm to 4pm

Email: info@romseycountrymarkets@gmail.com


HANDCRAFTED FITTED FURNITURE


Romsey & Winchester, Hampshire



TRANSFORM YOUR HOME WITH OAKBROOK INTERIORS

 www.oakbrookinteriors.co.uk

 info@oakbrookinteriors.co.uk

 01794 646123

Alcoves 🌿 Eaves 🌿 Hallways 🌿 Living Rooms 🌿 Offices 🌿 Wardrobes



Artful Summer Weekend

4th & 5th July

Meet the Artists & Makers

Discover wonderful contemporary art and crafts directly from a selection of local high quality, talented artists and makers.

Visit the event for a chance to **WIN a £50**

voucher to use at Hilliers whether it's in Garden Restaurant, towards Admission, Membership, Events or even a Workshop



www.artfulcollective.co.uk





TS Services

*TS Plumbing & Heating Services
TS Building Services
TS Renewable Services*



Plumbing & Heating



Building Services



Oil Works



Gas Works



Air Source Heat Pumps



Oil Tanks



Smart Technology

TS Services is committed to providing high quality plumbing, heating, electrical and building services to cover all your needs - whatever the size.

Whether you have a drippy tap, looking to upgrade your heating system/ boiler or looking to extend your property, contact us for your free estimate.

Email: tsplumbingandheating@live.co.uk
Web: www.tsplumbingandheating.com



Contact us today for a free estimate on: 01794 368091



Camper Charter

Unplug, unwind, explore **together**.

Call us to hire:

07908 293703

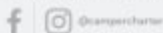


We are proud to introduce Ivy.

She needs to be seen in real life for the colour!

Ivy is our wonderful green and white campervan — available to hire for your next adventure. Come and see her in person!

www.campercharter.co



GARRETT AND SONS

 **BRAISHFIELD WORKSHOP & LAWMOWER REPAIRS** 

Precision Repairs • Garden Power • Local Expertise

 **WORKSHOP SERVICES**

Tractors/small diesel engines servicing and repairs

Hydraulic hose/pressure washer repairs

Welding, fabrication & custom builds

 **LAWNMOWER REPAIRS**

Blade Sharpening & engine tuning, ride-on/push mowers, & strimmer servicing

Local collection and delivery service

Fast, reliable turnaround

 Call: 01794 368280

 Email: markstevegarrett@hotmail.co.uk

DJ & COMPANY

CARPENTERS & JOINERS
Since 1976

David, your local Carpenter & Joiner for all jobs, large or small.



Institute of
Carpenters

01794 367422

dj@djeffery.co.uk

www.djeffery.co.uk



MARTYN DENNIS

Painter and Decorator

Fully qualified

Over 30 years experience

Interior and exterior

Superior finish

Quality branded materials

Competitive quotes



Tel:- 01794 279126 or 01794 501587

Mob:- 07734 938792



Professional Tree Surgeons Serving Romsey
and the surrounding areas.

- Tree Surgery
- Hedge Trimming
- Stump Grinding

Fully Qualified and Insured

07746448750

info@gthc.co.uk

www.gthc.co.uk

Proud members of
Checkatrade.com
Where reputation matters

W.W.H. Ewens Insurances Adviser

36 The Hundred, Romsey, Hampshire, SO51 8BX

Tel: 01794 515113

Web: wwhe.co.uk

David Ewens *FPFS CeMap*



FINANCIAL PLANNING

INVESTMENTS

LIFE COVER

MORTGAGES

PENSIONS

Authorised and Regulated by the Financial Conduct Authority

Whatever you want to store...

...for whatever reason – house sale and purchase not coinciding, travelling, house building work, paperwork overload or just 'de-cluttering' to sell your house more quickly – we offer a friendly and flexible local self-storage service near Stockbridge.



With competitive rates, secure storage all on one level and hassle-free 24/7 access, contact us now!



01264 316166 www.barn-store.co.uk



36 The Hundred, Romsey, Hampshire, SO51 8BX
Telephone: 01794 514455 Facsimile: 01794 518108
Email: sales@michaelrhodes.co.uk
www.michaelrhodes.co.uk

Estate Agents

Selling Property in Braishfield and
other Test Valley Villages

Tel:- 01794 514455 Fax:- 01794 518108

Website:- www.michaelrhodes.co.uk
E-mail:- sales@michaelrhodes.co.uk

View our Property List on line



ID KNIGHT
Estate management



- Paddock maintenance
- Fencing
- Tree surgery
- Hedgcutting
- Trees and hedging supplied & planted
- Seasoned firewood
- Treestump removal

Contact details:
01794 368794
07500 968373
id.knight@icloud.com



SUSANNE
BOSWELL
GARDENS



Garden Design

Garden Design & Consultancy; New
Gardens, Border Redesigns, Refurbishments,
Implementation, Garden Maintenance, Plants.

07900 312120

www.susanneboswellgardens.com
sueboswell@hotmail.com



Seasoned Hardwood Logs



Locally grown timber
cut and split to your requirements
Tel:- 01794 368513

For your convenience

As well as Tipped Loads we now also supply Firewood in Net Sacks and
Vented Bulk Bags

Graham Parrick Carpet Fitting

All types of carpet supplied
and fitted. Free Quotations

Tel: 02380 270608
07831 858619





Gas

LPG

Oil

Monthly payment options available

Established in 2009 and based in Romsey, we carry out the installation, service and maintenance of all gas, LPG and oil fired heating systems in and around Hampshire.

We are Worcester Bosch Accredited Installers allowing us to offer you up to 12 years guarantee on gas and LPG boilers and up to a 7 year guarantee on oil boilers.

Call: 01794 651123 email: info@heatwaveonline.co.uk

Web: www.heatwaveonline.co.uk





Landscape Contractor

All aspects of landscaping from design to completion

Family run business since 1991

Email Kevin@stickley-landscapes.co.uk

01794 368694

07770 452631

JN Landscapes Ltd.

Est 1979

01794 368106

The Old Grain Dryer
Upper Slackstead Farm
Farley Lane, Braishfield, Romsey,
Hampshire SO51 0QL
www.jnland.co.uk
jn@jnland.co.uk



Landscape design | Hard & soft landscape construction | Planting plans
Ongoing garden advice & aftercare

Designing and constructing projects varying from small gardens to extensive private and commercial contracts.

Save money on your home



Now is the perfect time to upgrade
your home with **grants, warranties,**
and **finance options** available!

- ✓ **Boiler Cover Plans** -
from just **£7.50/month**
- ✓ **Heat Pumps** -
Get a **£7,500 grant**
- ✓ **Worcester Boilers** -
0% finance available
- ✓ **Air Conditioning** - **£100 off**
- ✓ **Warranties** - up to
15 years for peace of mind



Call **023 8036 3838**



Showroom - 68 Hiltigbury Road, Chandlers Ford, Hants SO53 5SSS

Visit www.gaigas.co.uk

Recycle waste + food waste



June 5, 19
July 3, 17, 31

Household waste + food waste + garden waste



June 12, 26
July 10, 24

June						
M	T	W	T	F	S	S
1	2	3	4	5	6	7
8	9	19	11	12	13	14
15	16	17	18	19	20	21
22	23	24	25	26	27	28
29	30					

July						
M	T	W	T	F	S	S
		1	2	3	4	5
6	7	8	9	10	11	12
13	14	15	16	17	18	19
20	21	22	23	24	25	26
27	28	29	30	31		

Glass and textile recycling can be found to the rear of The Wheatsheaf pub car park



To find your local recycling centre and what can be recycled visit:

www.recyclenow.com/recycling-locator

Waste & Recycling

The collection of household waste and recycling takes place on alternate weeks. Food waste is collected weekly.

Black wheelie bin



Household waste every two weeks

Brown wheelie bin



Recycling waste every two weeks

Black kerbside caddy



Food waste every week

*Green wheelie bin



Garden waste every two weeks

This means that your black household waste wheelie bin and your kerbside food caddy will be emptied one week + your *green garden waste wheelie bin (sack) service if you have subscribed.

... and your brown recycling wheelie bin and your kerbside food caddy will be emptied the following week.

Recycling information can be found at: www.testvalley.gov.uk/recycling

Your bin(s) must be placed at the edge of your property by 7am on your collection day. Your bin(s) must be returned onto your property as soon as possible following your collection.

You can check up "when are my bins collected" at: www.testvalley.gov.uk/bins

Household Waste Recycling Centre

Open seven days a week all year round, excluding 25 and 26 December and 1 January. The opening times vary according to the time of year.

Bunny Lane (Casbrook) local tip booking www.hants.gov.uk/wasteandrecycling/recyclingcentres



Vita Life Fitness

Active living in retirement

*EXERCISE CLASSES FOR
PEOPLE OVER 50 & IN
RETIREMENT*

**Strength & Bone Density
Balance & Coordination
Mobility & Flexibility,
Seated & Standing Exercises
Join our Friendly Community!**

*At **Vita Life Fitness** we're here to help
Book your **free taster** class today!!!*

***Classes starting 16th July 2026
Braishfield Village Hall
Every Thursday 10:30-11:30***

**www.vitallifefitness.co.uk
shane@vitallifefitness.co.uk
07769 892 833**



Stay safe. Stay productive.

Whether it's Personal Protective Equipment (PPE), Janitorial supplies, cleaning and sanitising products or simply office supplies, technology supplies and equipment – we're here to help to keep your business safe and productive.

Call today for a free quote.



**ALL YOUR
OFFICE
NEEDS!**

OUR PRICES ARE GUARANTEED NOT TO BE BEATEN!

0800 376 9618

Unit 21, City Industrial Park, Southern Road, Southampton SO15 1HG
www.aa-business.co.uk www.aa-furniture.co.uk

