



BRAISHFIELD *Village Association NEWS*

Issue 199 June 2013



Spring blossoms at Braishfield School

Distributed free of charge by the Braishfield Village Association to the residents of Braishfield and the surrounding hamlets, and available on the BVA website:

www.braishfield.org

Braishfield Village Association

Committee - 2013

Chairman	David Robinson	368774
Vice Chairman	Graham Bennett	368109
Secretary	Rosie Groves	368178
Treasurer	Sheila Still	368384
Editor	Mike Mullane	368099
Website	Chris Balchin	368427
Distributor	Sue Mullane	368099
Committee	Tessa Allen	368014
Committee	Sue Coleman	367064

Editor's Notes

This magazine is produced by the Braishfield Village Association and the Editor reserves the right to elaborate, withhold or abridge material as space permits. The views expressed in this Magazine are not necessarily those of the Editor or of the Braishfield Village Association. Any form of reproducing or copying of this publication requires the prior written permission of the Editor.

© Braishfield Village Association 2006.

Written items for the 'News' should be sent to:-

The BVA Editor
Hazel Cottage
Braishfield Road
Braishfield
Romsey SO51 0PR by the date shown below.

Copy may be written, typed or on PC media but, ideally, by email to:

mike@braishfield.org

All items for publication must show the name, address and telephone number of the originator. Letters to the Editor should be on topics relevant to the villagers of Braishfield. The BVA attempts to deliver a copy of the Braishfield Residents Guide and the Village Design Statement to all new residents. If you have not received these publications, please contact the News Distributor on 368099.

BVA Website: www.braishfield.org

Latest copy date for the next issue is 16th July 2013

From the Chairman

At last we have Spring with us, and the signs of growth are all around us. And we're banking on a decent summer for several village events which are coming up: the 'Cream Tea' in support of the Hampshire Air Ambulance service on the Recreation Ground on the afternoon of 9th June - do turn up and support the cause (warning: the BUMS have been invited to play!); the School Summer Fayre on 29th June: the Flower Show on 13th July and running in conjunction with it, a 'bring your own' picnic in the afternoon on the Rec, with some fun and games for the kids (and if you're not careful, adults too): competitions, prizes, scarecrows!!

We've cleverly engineered this to coincide with the date on which the Duchess of Cambridge is expected to give birth; that won't be televised of course, so no need to stay at home (we'll bring you the news when (and if) it occurs! Just turn up, bringing your own stuff, including tables, chairs, rugs or whatever. If the weather is foul, we'll cancel.

In the evening we'll have a Barn Dance in the Village Hall, starting early at 6.30 to encourage families with children to join in. Again, bring your own refreshments, and dance to Pogles Wood and Braishfield's own caller, Graham Taylor.

The Barn Dance we held to celebrate the Royal Wedding was a complete sell-out and late bookers were disappointed, so don't hesitate this time - get in early and buy your tickets. Details are in this edition of the News.

On a rather more serious note, the application to convert the offices in Blackthorn Close to a residence, which has been refused by the Southern Area Planning Committee and the Planning Control Committee of the Borough Council, is now going to appeal before the Planning Inspectorate (i.e. central government). The BVA will continue to object, along with the Parish Council and the Village Hall committee, as we believe it will seriously affect the Village Hall's use for events like our barn dances through new residents complaining of noise; not so much from inside the hall but from people leaving late in the evenings etc.

You can add your concerns by writing to: The Planning Inspectorate, Room 3/10 Wing, Temple Quay House, 2 The Square, Temple Quay, Bristol BS1 6PN www.planningportal.gov.uk/pcs

Finally, if you feel you can help to further the work on the House Survey, please contact Tessa Allen, who will be happy to talk to you and enlist your aid. Her phone number is 368014.

From the Editor

Quite a roller coaster this time. If you are seeking amusement/events over the next month or so, look no further than this magazine! I won't rehearse it all, but there are many local and peripheral activities well-worth considering. The Chairman draws attention to our main Village events, but if you look carefully, there are many others including Open Gardens Day, Coffee mornings, Village lunches, Armed Forces Day; and beyond the immediate future, the groundswell building towards the biennial Variety Show in November.

The rather cross letter from Julia Smith (P8), who grew up in Braishfield, requires a response! Julia, if you read this, be aware that you clearly 'parachuted in' at a most unfortunate time. Yes, litter accrues

from thoughtless traffic which has more than doubled recently, due to diversions surrounding Romsey (and likely to get worse - see Letter P6). We have a very dedicated 'all weather' litter-picking team who strive to keep the passing litterbugs at bay, and would be delighted to recruit you when next you visit! Anyway, enough irony!

With this magazine comes the new Residents Guide. Please keep me informed of any changes and we will publish them as corrections in future Magazines.

Meanwhile the essential waterworks continue along Braishfield Road, but very thoughtfully in my opinion. Peace cannot be far away! So I hope you enjoy a good Spring and early Summer, and I'll be back in August!

BRAISHFIELD VILLAGE HALL

You will note when visiting the Village Hall, play area or Rec there are now 4 new picnic tables adjacent to the play area and car park. These have been kindly donated by a Villager for use by all, particularly parents whilst their children are using the play area and anyone wanting to rest whilst enjoying the view. They have been gifted to the Village Hall who will be responsible for their upkeep. I have, on behalf of the VH Committee and the Village, thanked the donor who wishes remain anonymous. What a kind gesture !!

Richard D Brazier - Village Hall Chairman

VILLAGE LUNCHES CHURCH ROOMS 12 NOON

MONDAY 10 June

MONDAY 08 July

AUGUST - no lunch

MONDAY 09 September

MONDAY 14 October

MONDAY 11 November

MONDAY 09 DECEMBER - CHRISTMAS LUNCH

Remember the BVA Website: www.braishfield.org

Letters & Notices

Dear Sir,

May I through the Braishfield Village News express my sincere thanks to the residents of the Baddesley Division who voted for me at the County Elections on May 2nd. Their continued support is deeply appreciated by me. I have served as the County Councillor for our area for 21 years and I will continue to work on behalf of all the local residents regardless of party politics to get the best deal for local people.

Yours faithfully

HCC Cllr Alan Dowden
Baddesley division

All Saints churchyard - creating a natural meadow

A proposal from Steve Renvoize that the grave yard north of the Church be allowed to grow as a meadow was put to the Church Council. He suggested that this would increase the growth of wildflowers and encourage the presence of butterflies and other insects.

The suspension of the regular mowing would have to take place and the process would need managing. It is hoped that a number of species, as many as 20 wild plants, will be allowed to grow to maturity. Steve also added that a path would be cut and maintained along the north wall of the church and paths cut to graves which are regularly attended. The strip of grass running alongside the path next to the paddock should be cut regularly. The whole experiment will be reviewed in the autumn. Steve's proposal was unanimously accepted by the Church council.

A Church work party has recently cut back and cleared the tangled undergrowth in and around the hedge running along to northern boundary. The hedge was also cut and trimmed. It is hoped that this work and the meadow experiment will enhance this area of the church grounds.

Comments and observations regarding any of the above are very welcome.

Andrew Brooks

All Saints' Church Warden

Letters & Notices cont.

Test Valley Revised Local Plan for WHITENAP

We, in Braishfield, are already experiencing the increased traffic attendant with the huge development at Abbotswood. The impact of obscenely increased traffic numbers in the area which will occur during rush hour periods at the busy Braishfield Rd and Cupernham Lane junctions with the Romsey/Winchester road, should this plan for Whitenap go ahead, make no mistake, will be massive. It is inconceivable that planners have not done their homework here. It is in our interest here in Braishfield to formally object to this plan before the peace and tranquillity of this area of Romsey is destroyed for ever.

The Whitenap, Abbotswood and Brewery sites will increase the population of the Romsey area by around a third and here, in our area, by roughly 100%. The narrow streets and essentially rural lanes of the area cannot possibly be expected to cope and neither can the existing utilities and transport facilities. Moreover, there appears to be nothing in the Plan to take account of this. Abbotswood alone is already showing signs of the traffic problems to come and it is currently nowhere near completed or occupied.

It should also go without saying that the Whitenap Plan flies in the face of Government policy to exclude the development of prime agricultural land and to protect Green field areas for the good of the community. There are no exceptional circumstances here which would encourage this planned group of massive development. It is also plainly evident that the huge extra demands on water supplies and attendant waste management which will occur with the immediate increase of 800 households at Abbotswood and a further 1300 planned households at Whitenap will have an adverse impact on existing households and would seriously increase the possibility of flooding and worse, restricted supplies, due to the very high demand and increased amounts of waste water.

Don't delay, write or email your objections to: LDF@testvalley.gov.uk or Planning Policy, Council Offices, Beech Hurst, Weyhill Road, Andover SP10 3AJ.

John and Angela Bevan
Fairbourne Cottage

Armed Forces Day

Two Union Jacks will be raised at 8am on Saturday 29th June to mark Armed Forces Day. They will be lowered again at 6pm on Sunday 30th June. Please come and support the occasion at the entrance to the Village Hall car-park.



FAST TRACK TO FITNESS

Michelle Hughes

T: 07787 526619

NATIONAL ACADEMY OF SPORTS
MEDICINE INTERNATIONAL
PERSONAL TRAINER
REPS LEVEL 3

QUALIFIED IN
ADVANCE RESISTANCE TRAINING
PRE & POST NATAL
ULTIMATE FAT LOSS

PERSONAL TRAINING

Feeling overweight and overwhelmed at the
challenge of losing weight?

Need Motivation

Encouragement

Will power

Your health

Exercise

And see

RESULTS!

All sessions are tailored to your needs
and own personal goals

CALL OR EMAIL MICHELLE

E: personaltrainer.hughes@gmail.com

DOGS

DOGS OWN GROOMING SERVICE
Professional All-Breed Grooming



Expert service by fully trained & experienced groomers in a friendly, caring
environment

Church Walk,
Farley Lane
Braishfield
Romsey
SO51 0QL

Appointments & further information – please call:

Office 01794 367722

Prue 07720 054518

Penny Clare 07837 944671

Website: www.dogsowngrooming.co.uk

Letters & Notices cont.

“Keeping the home fires burning” at All Saints Church

Thank you to all who have made donations and supported the fund raising for the replacement boiler at All Saints. We are especially grateful to the 200 Club for giving us £174. The cost of the boiler and installation was £4 short of £5,000 and donations/fund raising to date has brought in £1,150 with Gift Aid. If you would still like to donate, cheques made payable to All Saints PCC can be given or sent to Graham Bennett, PCC Treasurer, Acorns, Braishfield Road, Braishfield, Romsey, SO51 0QE. If you can Gift Aid your donation, that would be really good.

We are always grateful for the many ways in which our village community supports the parish church, both practically and financially, and we are most relieved that we have been able to replace the boiler and keep the building warm and welcoming for everyone.

Jane Bennett, Andy Brooks, Churchwardens

Dates for Your Diary

All Saints have two events coming up!

- Cream Teas in August at the home of Mike and Betty Horton, Spring bank, Newport Lane, date to be confirmed
-
- A Michaelmas Fair in and around the Church Room, Saturday 28th September 2 - 4pm

Dear Sir

I lived in Braishfield as a child and recently came back to visit. I was horrified at the state of the lanes, litter and rubbish everywhere - what has happened?! I was informed by my friend that there are a group who go round cleaning up the mess: perhaps they are all on holiday: they don't seem to have done a very good job. Obviously the unpleasant people who throw the litter down are to blame but would it be too much to ask if the residents could just go outside and pick up the mess in front of their houses. It would help - or don't you do that sort of thing in Braishfield?

Sincerely
Julia Smith
Dawes Lane

Mop 'Til We Drop

Cleaning Services

For a reliable, trustworthy and honest cleaning service.

Specialising in private homes and small businesses.

Quotes are also available for a one off cleaning blitz.

All quotes are on an hourly basis
For professional and affordable cleaning in your area

Contact Mark on
07757674456

References are available from many of our satisfied customers in your area.



www.yoga4back.com

07909 545311

Yoga Classes

Wednesday: Braishfield, the Church Room,

7.00-8.00pm: *Yoga4back & General Yoga*- suitable for all

8.00-9.00pm: *Ashtanga Vinyasa Yoga*- dynamic style

£25.00 block of 4 consecutive weeks

Saturday: Romsey, Romsey Pilates Studio

9.00-10.00am: *Yoga4back & General Yoga*-suitable for all

£8.00-drop in

Please contact me for further information

Letters & Notices cont.



Charity No: 1106234

HAMPSHIRE & ISLE OF WIGHT AIR AMBULANCE

BRAISHFIELD CREAM TEA MARQUEE

Sunday 9th June 2013 (2pm - 4pm)

Braishfield Recreational Ground

To include 2 fresh scones, jam, clotted cream and bottomless tea cups!

Just £5 per head in aid of Hants & Isle of Wight Air Ambulance

Entry by ticket only (Reserve your place now)

Provision has been made for wet weather so event will still go ahead

Music by the Braishfield "BUMS" Ukulele Band

To buy your tickets, please telephone Wendy Jeffery on 01794 367282 (after 6pm)

Braishfield Village Open Gardens Day Sunday 21st July 2013

Gardens opening times as shown

Enjoy this opportunity to visit the following gardens:

Braishfield Manor, Paynes Hay Road	2.00pm to 7.00pm
Chalk Pit Cottage, Braishfield Road	2.00pm to 7.00pm
The Old Stables, Lower Street	2.00pm to 7.00pm
Springbank, Newport Lane	2.00pm to 7.00pm
Orchard View, Braishfield Road	2.00pm to 5.00pm

Refreshments will be provided at selected gardens.

Donations to supported charities appreciated

Gardens are open to Villagers and their Associates only

W.W.H. Ewens Insurances Adviser

36 The Hundred, Romsey, Hampshire, SO51 8BX

Tel: 01794 515113

Web: wwhewens.co.uk

David Ewens *APFS CeMAP*



FINANCIAL PLANNING

INVESTMENTS LIFE COVER MORTGAGES PENSIONS

Authorised and regulated by the Financial Services Authority

FLAMBARDS

Kitchens - Bathrooms - Wetrooms - bedrooms

Tel: 02380 321918

Handcrafted, hand painted kitchens
Modern 'off the shelf' quality kitchens
Bathrooms
Wet rooms
New en suites created in free space

My key to your satisfaction is that I am 'hands on' throughout the whole project. I do not use 'roving fitters', just a team of dedicated specialists with whom I have worked for many years. No gimmicks, just quality and value for money



Call Nick Davies on 02380 321918
Unit 2, The Barn, Upper Slackstead
Farm, Farley Lane, Braishfield,
SO51 0QL www.flambards.com

Romsey 3rd Cub Pack & Braishfield Brownies

3rd Romsey Cubs have enjoyed the dark winter months, when they cannot get outside much, learning how to keep themselves, friends and family safe by earning their Home and Personal Safety badges and through a visit to Romsey fire station. We have also encouraged new growth for the Spring by planting seeds in home-made biodegradable newspaper pots. Our seeds and compost were kindly donated by Mary and Roger at Choice Plants; Roger even came along and showed us how best to plant and look after the seeds and played our seeds a tune on his whistle to help them grow. Many thanks to Mary and Roger!



As you can see they are doing well!

Katie
Cub Leader
3rd Romsey Cub Pack

What we got up to at Brownies in the Spring term

Last term we were busy doing a range of activities, for example we began with a trip to the pantomime to see Treasure Island, which was FAB! Then Tawny Owl made a King Cake and told us all about its link with the French and the way they celebrate Epiphany.

This led on to us singing songs from around the world such as Frère Jacques (France), Barges (Holland) and Johnny Apple Seed (U.S.A). We also looked at the Chinese culture and tried on costumes as well as tasting their food. We took a fortune cookie home. Then over half term we went on another trip, this time to Hilliers Arboretum for 'Thinking Day'. This got us to think about other Brownies from around the world. Closer to home the Brownies made tea and cake and entertained the senior citizens of Braishfield. We also made teapot cards for Mother's Day.

To finish our spring term we prepared for Easter by making and decorating craft easter eggs.

By Lily Stickley and Gracie Cain (Sixers) on 28th March 2013

BABYSITTING!

LORNA DOLBY-STEVENS, 16 years old.

I live in Braishfield, Crook Hill.

£5 an hour

I can do most weekends, and
week days permitting.



I am a responsible, trustworthy and reliable 16 year old. I've had some experience with my 4 year old cousin and young children in general. I can cook meals for your children and play games or read to them.

I'm not too keen on large dogs, but otherwise pet friendly!

CONTACT ME:

Phone:

01794 368 119

Email:

lornads97@googlemail.com

Willowbrook House, Crook Hill,
Braishfield, SO51 0QE



Graham Parrick Carpet Fitting

All types of carpet supplied
and fitted. Free Quotations



Tel:- 01794 323173
07831 858615

BMADS production of 'Hay Fever'

This year BMADS returned to the 20th Century with their production of Noel Coward's ever popular 'Hay Fever'. As a newcomer to BMADS last year I was impressed by the dedicated and talented team that swing into action every year to organise sets and scenery, lighting and sound, costumes and props, tickets, refreshments and raffle - and, of course, the play! This year was equally impressive; an excellent, well dressed set (with intriguing artwork!) greeted the arriving audience, and the well attended Thursday Preview followed by two Full House performances shows just how much the village loves to support this annual event.

Noel Coward reportedly based the play on an actress and her family that he once stayed with and the 'plot', as such, is simply the confusion that ensues when each member of the family invites a guest for the weekend without mentioning this to anyone else. However, the introverted, self centred nature of this family leaves the guests feeling manipulated, ignored or overwhelmed and the interplay between the characters is a showcase for Coward's acute observation of human nature.

The action got off to an excellent start with some lively scene-setting banter between Simon (played by Sam Newborough) and Sorel (Varena Othen) the son and daughter of David and Judith Bliss (the host family) - but I wonder just how many people realised that this Sam was in fact a 'Samantha' rather than a 'Samuel'! I

thought Sam gave Simon a very believable boyish swagger and even her stubble looked convincing! (BMADS won't let a little thing like gender affect their casting!)

The rest of the cast had clearly got to grips with their characters too. David (Peter



Quarendon), the distracted author, argued animatedly at the breakfast table over the geography of Paris, using butter dishes and toast racks to amusing effect to make his point; Judith (Wendy Quarendon), his actress wife trying to engineer a career comeback, gave a delightful portrayal of an over-the-top but also over-the-hill diva of the theatre; Clara

(Dorothy Ross), the long suffering housekeeper, left actors and audience alike in no doubt of the



inconvenience the weekend was causing her - until an unexpected tip had her break into song with an equally unexpected verse of 'Tea For Two'! Sorel lost no time in leading her mother's guest, Sandy, (Mike Allen) into the library and into her arms - although Mike's convincing and amusing succession of "Oh, rather!"s showed she was pushing at an open door - and Varena conveyed well, I

thought, Sorel's awareness of the eccentricity of her family. The other guests were: Jackie (Becky Hougham), a 'flapper' who had been invited by David for literary research purposes and then totally ignored; Becky's



performance successfully captured Jackie's essential shyness behind the emerald green eye shadow, and clearly showed her increasing agitation at feeling totally out of her depth; Myra (Penny Brindle) toyed ruthlessly with Simon's affections with an obvious sense of disdain for his feelings until completely outplayed at her own game by David; and Richard (Colin Kennedy) was consistently

convincing as an uptight diplomat desperately trying to use all his professional skills to survive the awful tensions of the weekend.

Some typically witty lines were delivered to good effect - Judith describing Myra as someone, "Who uses sex like a shrimping net!" - and some snappy repartee between David and Myra are examples that come to mind.

Overall, another resounding success for this enthusiastic local group. Congratulations to Becky Hougham, John Edwards and Richard Groves for their directing and producing - and thanks to everyone for the entertainment.

Peter Scrivener.



**THE
DOG &
CROOK**
BRAISHFIELD

DOG & CROOK BRAISHFIELD

FREEHOUSE

Traditional home cooked food served daily

Offering a selection of Real Ales
Families Welcome
Large Beer Garden

Food Served Monday to Friday
12pm - 2pm and 5.30pm - 9pm
Saturdays 12pm - 2.30pm and 5.30pm - 9pm
Sundays 12pm - 3pm

Special price two course set lunch menu
available Monday to Friday

HAMPSHIRE
HOSPITALITY AWARDS



**HAMPSHIRE
HOSPITALITY**
SUPERIOR
QUALITY
ASSURED

Winner 2013-14

Crook Hill • Braishfield • Romsey • Hampshire • SO51 0QB • Tel: 01794 368530

visit us @ www.dogandcrook.co.uk

**Armed Forces Day - Sat 29th June 2013
- Charity Concert**

**The Band and the Pipes and Drums of the
Brigade of Gurkhas**



Evening Concert Sounding of Retreat and Fireworks

Venue - The Island House, Greatbridge, near Romsey SO51 0HP
In the grounds of Sarah and Christopher Saunders-Davies's home

8.00 pm to 10.00 pm
Gardens Open for Picnics at 6.00pm

The Island House Gardens will open at 6pm and provide a marvellous venue for the evening's event. You are welcome to bring picnics, rugs and garden chairs, but, please, no barbecues or garden flares. The Band Concert will begin at 8pm and sounding Retreat will follow at 9.20pm with the firework display immediately afterwards.

To: Gurkha Welfare Trust Box Office, POBox 2170, 22 Queen Street,
Salisbury SP2 2EX

Tel: 01722 323 p55 E-mail: romseyconcert@gwt.org.uk



I require.....tickets at 19.50 each - after 1 May 2013 £23.50 each

I would like to make a donation of £.....

or

I enclose a cheque/postal order for £.....

I understand, in the unlikely event of cancellation due to matters outside the organisers' control, no refunds can be made.

Your Name.....

Address

Postcode

Daytime tel No and area code.....

Please enclose a stamped addressed envelope for your tickets

Down to Earth Garden Machinery Romsey



LES SMITH

Your Local Specialist

with over 40 years experience

- **Servicing & Mobile Repairs**
- **New and used Machine sales**
- **Spare Parts**
- **Oils & Batteries**
- **Hand Tools Sharpened**
- **Hire of Garden Equipment**
-

E-mail: down2.earth@virgin.net
Payment may now be made by card

Contact Les on:

01794 367047

Mobile 07771 874471

The Wheatsheaf Braishfield

01794 368652

Pool table

Real ales

Families welcome

Dogs welcome

Large garden

Traditional home made food





Braishfield School

Summer Fayre

Saturday 29th June



Entertainment by

bZents Theatre Co.

3 x 30 min theatrical performances and
Jesting workshop
www.bzents.co.uk



Plus lots more.....

Tea Cup rides, BBQ, Beer tent, Tea and cakes, Coconut shy, Crockery smash, Zorbing, Fun dog show, Car show, Bouncy slide, Pocket money toy stall, Trade stalls, Ice cream van....

Braishfield Recreation ground

12 – 4pm



Trade stall enquires – Sam 01794 367067

Seasoned Hardwood Logs



Locally grown Timber
cut and split to your requirements

Tel:- 01794 368513

For your convenience

As well as Tipped Loads we now also supply Firewood in Net Sacks and
Vented Bulk Bags

HomeWorks Of Romsey

Electrical installation and repair

The following work undertaken:

- Repairs and upgrading of your electrical installation.
- Additional lights and sockets
- New part or full installations
- New consumer units

Please contact me to discuss your requirements:

Peter Henery - Pendle Cottage, Braishfield Road, SO51 0PQ.

Tel: 01794 367404 Mob: 07580 054468

Email: peter@homeworksofromsey.co.uk

Approved Contractor with the ELECSA Part P Competent Persons scheme

ELECSA

(see www.elecsa.co.uk for more information)

Sheep Matter at Elm Grove

Lambing is finished. Kate decided to sell most of her pregnant ewes as she herself is pregnant, so it has been an enjoyable time with only 40 ewes, all of whom have produced their expected twins. Really good.

The ewes in the allotment field are the ewe lambs that Kate bought last year to use later this year for lambing next spring. They seem to like it over there, we often see them running about and jumping for joy. These are the ones that were being kept over in Ampfield, until one day several of them were found in state of great distress - two had actually been bitten, one very badly on the leg and another on the ear. There is a pond in the field over there and several were very wet and in a state of shock as they had obviously gone into the pond, maybe to get away from the attacker. Sheep and water do not

mix, as the weight of a wet coat can be too much. The sides of the pond are quite steep apparently, so they did very well to get out.

Kate had to get the vet who said it was definitely a dog that had attacked the sheep; fortunately the ligament hadn't been bitten through and she is still being given special care in the hay barn; her leg was 'revolting', but with expensive Veterinary advice and nursing by Kate and Ian she will eventually be able to join the others over the road. The one with the bitten ear has been kept with her for company. I don't think Kate will use the Ampfield grazing again while dogs like that are around.

The four pet sheep are now three as Ollie died. And the three rams are enjoying their lazy summer months as I hope we all will!

Wendy Quarendon

Braishfield Ukulele Musical Society



The Society gave its first official 'away' performance in the early evening of Saturday 11th May when 5 of the group played for the Residents of the Fair Haven Rest Home in Bournemouth. Accompanied by their 'roadies' (wives and husbands!) the BUMS played and sang beautifully for some 90



minutes with a short interval for a very welcome reward of a glass of sherry! All the songs were well known traditional 'oldies' and it was delightful and very moving to see the response and keen singing from the whole audience.

Property Maintenance & Handyman Services

Interior & Exterior Painting & Decorating
Wallpapering

Sheds & Fences Erected Painted & Re-felted
Grass Cutting, Hedge Cutting & Strimming

Floor & Wall Tiling

Flat Pack Assembly & Small Carpentry Work

Windows & Doors Repaired & Replaced

House & Garden Clearance

Fascia Boards & Gutters Cleaned, Repaired & Replaced

Driveways & Paths Repaired & Re-surfaced

Kitchens & Bathrooms Fitted

Ground Works & Drainage

Brick work & Re-pointing work

Collection & Delivery Service

Plus many other areas of maintenance work & odd jobs
carried out

Ben Kington

Telephone : 01794 368536

Mobile : 07866551725

Fully insured References available

Free Estimates

A Village Benefactor

For several years I have been doing research into parts and people of the village that at one time were associated with Elm Grove Farm, the history of the church room and church benefactors. It has been fascinating to discover several links between them, but I suppose it isn't surprising considering the small area in which we live.

Braishfield parish is very fortunate in having a record of life in the village and All Saints church, scribed by Sidney Scorey who had been a chorister for nearly 80 years and whose father had been a churchwarden for many years. In Sid's Memories he wrote that 'the choir stalls we now have was the work & gift of a lady, Mrs Dodgson of Braishfield House. Some of the heavy work of the pulpit was done at Winchester. We have often wondered if 'the work and gift of a lady....' meant that she actually wielded the chisel.

Braishfield House estate at one time owned Elm Grove, so I have copies, from the Records Office, of various purchases and leases of Braishfield House. In 1896 Charles Heathfield Dodgson bought Braishfield House from David Way (there is a plaque remembering him on the wall of the church near the lectern). Charles and his wife Caroline Maud had been in India prior to this, their 2 boys were born in Dharmasala; he was a lawyer. When they bought the House their boys were 8 and 4 years old. Charles Heathfield Dodgson died 2 years later in 1898 aged 45 years and is buried in

the churchyard. His grave is marked by the tall, plain cross on the right of the path leading to the church door. By the time of the 1901 census Caroline was living in Kent, and Braishfield House had been bought by Mr Eaton; his daughter Janet continued to live there for a long time.

According to Sid's memories, the choir stalls donated by Mrs Dodgson, were installed in 1909-10. This was several years after she had left the village to go to Kent. We can only assume that she found great comfort in the church, receiving great kindness following the death of her husband and wished to give something back to the church. She had lived here for less than 5 years. Hannah Boothman recalls Sid Scorey telling her that Mrs Dodgson lived at Braishfield House while the work was being done, so perhaps she lodged with Miss Eaton the then owner. We will never know if she actually did any of the work on the stalls herself. There is a label under the seat of the Tenor's pew, showing Thomas & Co, of Highcliffe Works, Winchester. (Their Old Furniture Store was at The Old Rectory, 2 Chesil Street and the telephone number was Winchester 350!), so presumably they were made by them. There is also a record in the Vestry meeting minutes of 1902 that the new church turret was a gift from Mrs Dodgson; she had already given £100 and the total cost was to be £169 including the clock. A very generous lady.

I discovered that Caroline Maud Dodgson nee Tooth was born in Sydney, Australia, in 1860, her father

having emigrated from Kent to set up the first Brewery in Australia with his brothers - the Kent Brewery. The brewery became the largest in Australia and when he died in 1894, her father was a very wealthy man; I came across a newspaper cutting giving details of his bequests that included £25,000 to each of his 6 children. Caroline Maud married Charles Heathfield Dodgson in Kent in 1887; he had read Law at Oxford, They then went to India where both their sons were born.

I wanted to find out more about the Dodgsons and searched on Google. There I found an article by a Dr Susanna Dodgson who is the great great granddaughter of Charles and Caroline; her youngest brother was named after 'our' Charles Heathfield Dodgson. Dr Susannah lives in America and her brothers in Australia, where they emigrated when young. I emailed Dr Susannah telling her about

'our' Caroline Maud Dodgson and how grateful we are for her gifts and that Charles is buried here. I had a delighted reply almost immediately saying how excited her brothers would be, but that Charles died in India -her youngest brother had seen his grave!

In subsequent correspondence she has accepted that the Indian grave is probably a memorial to Charles but who knows what is in there. Caroline was an amazing lady; to quote Dr Susannah 'she moved several times as she burned through her fortune', and 'from what I have heard, in a family of brilliant eccentrics, Caroline shone. My father adored her, and quite clearly, his memories of her stories about Australia made him pack us all off for the colonies in 1957'.

They don't make them like that any more!

Wendy Quarendon

Kathy Hodge Bowen Therapist cert. ECBS, MFHT

'RELAX and HEAL' with the Bowen Technique – One of the most straight-forward and effective hands-on therapies available.

The 'Bowen technique' is a relaxing, soft tissue remedial therapy that involves the therapist using fingers or thumbs to move over muscles, ligaments and tendons on various parts of the body. I have treated many people from young children through to more senior clients presenting with lower back pain, shoulder injuries, hamstring and ankle pain, digestive disorders, asthma, fatigue, head aches and many more. If you can't come to 'The Bowen Room' in Romsey I can come to your home.

Further information can be found at www.thebowentechnique.com

Fully qualified and insured therapist.



FHT
Federation
of Holistic
Therapists

MEMBER

To make an appointment please contact me to arrange your free consultation and introductory session on Tel. 07881910432 or email to kathyhodgebowen@gmail.com

BRAISHFIELD VILLAGE ASSOCIATION

Saturday 13th July 2013



shutterstock · 44023225

Running alongside the Flower
Show from 2pm

An afternoon for family picnics, fun and games

On the Recreation Ground

Bring your own picnic, bbq, tables, chairs &
rugs

Variety of competitions for all the family including:

*Mini scarecrow competition (bring your
own) Family photo competition (scavenger
hunt, bring your camera)
Wellie throwing*



shutterstock · 96982424

Watch the Village Notice Boards for more
events and timings

Barn Dance 6.30pm - 10pm in the Village Hall

Music by Pogles Wood Band
Caller Graham Taylor

Tickets from Sheila Still Tel: 368384

Adults £7 Children 5-16yrs £3
Under 5yrs free, Book early, limited tickets

Bring your own supper but remember to
take your litter home



shutterstock · 87744790



shutterstock · 123469381

DJ Jeffery & COMPANY

CARPENTERS & JOINERS

Institute



of Carpenters
C03092

01794 367422

www.djeffery.co.uk



MEMBER OF THE FEDERATION
OF SMALL BUSINESSES

DURBAN HOUSE

Nursing Home

We provide care for the elderly in a friendly homely atmosphere with 24 hour Nursing Care

Please ring Matron on
01794 512332

Email: urban@jsai.co.uk
www.urbanhouse.co.uk

Durban House Woodley Lane ROMSEY SO51 7JL



Braishfield Horticultural Society

The Annual Village Flower Show, organised by the Braishfield Horticultural Society, will be held in the Braishfield Village Hall

On Saturday July 13th. 2013. Opening at 2.00pm.

All Villagers are welcome to enter. See the Show Schedule

A number of stalls will be in evidence including Plants, Produce, Bric-a-brac and Books etc. Villagers are invited to set up stalls to raise funds for their favourite charities for free. Alternatively anyone wishing to sell items which they no longer require, or produce such as home made cakes, jams, etc or useful services, can set up a stall in return for a small donation to the Society.

Now is the time to search your attic.

Within the Village Hall there will be much to see and admire.

The Tea Room will be open for refreshments including delicious home made cakes. Sit back, relax and enjoy a chat with old friends. Above all, do come along and support this long standing Village event
To book a stall table, please contact, Bob Thomson on 368553.



Music on stage provided by The Braishfield Ukulele Musical Society

BRAISHFIELD SOCIAL CLUB

Weekly Events

Monday Nights - Free Pool

Wednesday Nights - Zumba 6.30pm

Saturday Nights - Meat Draw

Sunday Nights - Bingo

We also have Pigeon Club, Dart and Crib teams
always looking for new members.

Snooker Room, Table Football, Skittle Alley all
available to Non Members.

Forthcoming Events

- **Quiz Nights** held fortnightly on Friday
Nights

•

Also

Large Function Room For Hire and;
We now hold the village Wheelchair - Please
contact Graham on details below.

01794 368458 (Evenings)

braishfieldsocialclub@hotmail.co.uk

Jumbulance Trust update

Our local group had a very good end to 2012 with a fund raising weekend at Oakfield in September in the form of a Garden tea party in glorious sunshine on the Saturday and a reunion lunch in the barn on the Sunday for over 80 people who had travelled with us in 2012. We raised over £2,000 in 2 days. We then had our final 2012 jumbulance trip in the form of a pilgrimage to Lourdes in October. This was a very special experience for several new helpers from Braishfield and Romsey, who are all now coming on the 2013 holidays.

We normally do not do holidays in the winter because there is no demand in the colder months. However in January we did our first younger disabled persons Ski trip to Austria. This was a new national group and was open to younger people from all over the UK. The helpers were experienced skiers and used to working on the jumbulances and they raised the £5,000 needed to pay for the specialist ski instructors and equipment for the VIP (sick or disabled people in jumbulance speak).

From Romsey we sent a young disabled woman and my daughter, Emily, as her helper. It was a great success and in 2014 they will do 2 ski trips in January and February. We had our own local reunion to dispel the winter blues in Poppies at Choice

Plants in late January and all enjoyed doing decoupage in the morning followed by a visit from the lady Mayor of Test Valley, Dorothy Baverstock, who gave out certificates and badges from the TVCS to all our



Volunteers who have travelled in 2012. We then all had a celebratory lunch in Poppies.

In 2013 we are offering 4 holidays from this area, A group have just been to Brittany, in June we have Norfolk for young 18-30 year olds, and in September 2 separate groups to Minehead and the highlands of Scotland.

To my personal delight I have also just taken a new N. Yorkshire Jumbulance Group to N.Wales and we had the hottest, sunniest day this year when we went up Snowdon. We also entered a mixed able bodied and disabled team in the Romsey Rotary Relay Marathon and have raised to date over £1,000 for the Jumbulance Trust.

Chris Chisolm

Providing a comprehensive range of high quality
legal services to our local community

01962 844544

Star Lane House, Staple Gardens, Winchester,
SO23 9AD

www.shentons.co.uk

Martyn Dennis

Painter and Decorator

- Fully Qualified
- Interior and Exterior
- Over 20 years experience
- C.I.T.B. Registered
- Wallpapering a Speciality



Tel:- 023 8026 9695 or 01794 501587

Tuesday Coffee Mornings at Village Hall

The village hall needs income to help with refurbishment and the committee would also like it to function more as a community centre and asset.

We thought a Tuesday Coffee Shop might be a good start. So, the hall will be open regularly from 9:00am till 11:30 am every Tuesday morning and all are welcome. We have bought some great coffee (as supplied to Goodwood House) and smart tea, and lovely cakes are being baked.

If this is a success we will open Thursday afternoon

for tea from 3:00pm till 5:30pm. Regular opening will need some community help so if you could please spare the time to help occasionally on a Tuesday morning you would be very welcome. Or let us know if Thursday afternoon for tea would be a better time to help?

Could you do some baking? We can cover the cost of the ingredients for regular bakers.

To offer time or cakes please ring Marian on 367214

Can you bring spare plants,



flowers or produce for a produce stall? Jam is always welcome!

Odd China Cups

Have you any unwanted lonely pretty china cups that need a new home?



Cups and saucers and plates that are all that remain of tea sets would give afternoon tea a great 'retro' feel. Small milk jugs and sugar bowls also welcome.

Magazines

Quality glossy magazines that are less than a year old can be recycled at 50 pence each to further bolster funds for your village hall. It always seems a pity to throw them out.





One example of the exciting new Chesney range we have on display

- Largest range of Fires in the South serving the region for nearly 30 years
- Fabulous new extended showroom with over 35 fully lit display fires
- Contemporary and Traditional Fires with Stone Fireplaces
- Bespoke stone masonry and hearths cut to your specification
- Open Gas Fires for homes with or without a Chimney
- Gas, LPG, Multi Fuel stoves and Electric fires, Hang on the wall options
- Comprehensive in-house expert survey & installation advice
- Professional installers to HETAS or Gas Safe accreditation
- Real Wood and multi fuel burners on display
- Air conditioned Showroom, Free Car parking, open 6 days a week



West Country Fires Ltd

A fire for every home

New Showroom: 27-33 High Street, Totton. Southampton

Hampshire. SO40 9HL. Tel: 02380 333818

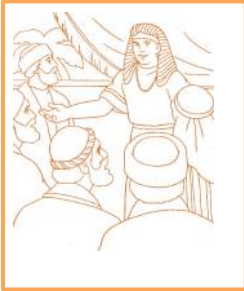
Email: malcolm@westcountryfires.co.uk

Joseph: trusting in God

Sunday 30 June 2013

Braishfield Church Room,
Braishfield Church SO51 0QH

2 30 pm – 5pm



MESSY ACTIVITIES CELEBRATION FEAST

Messy Church is being organised by the churches in our group of five parishes,

for all families to attend. Children to be accompanied by parent/carer.

For further information contact Pepe Alexander 340386 or email:

P.alexander386@btinternet.com. or Kate Orange 367417 or Mary Savage 367908 email: savage@choiceplants.freeserve.co.uk.

Braishfield Young Saints

is doing Messy Church, together with the other churches in the benefice.

The next meeting will be at our Church Room (see above). It's meant to be church for families who might want to belong to their local church and bring their children up to learn about the Christian faith, but who couldn't cope with traditional Sunday morning church services.

It's not a church event - it *is* church - but not at all as we may have known it! find out more at: messychurch@org.uk

The Village Variety Show

Friday 8th and Saturday 9th NOVEMBER 2013

UPDATE

less than 6 months to the event.

A tantalising array of Village talent has already confirmed their intention to perform or help.

Do not hold back – register your interest NOW

by calling or e mailing: Richard Brazier 368414 or rdbrazier@hotmail.com BRAISHFIELD HAS TALENT!!

ART CLASSES

ON WEDNESDAY MORNINGS
AT THE CHURCH ROOMS, BRAISHFIELD

ALL MEDIUMS, PAY AS YOU GO.
BEGINNERS WELCOME.

WWW.CROSSBARNART.COM OR CALL: 07930 669443

full portfolio at
www.jamelakib.com



36 The Hundred, Romsey, Hampshire, SO51 8BX
Telephone: 01794 514455 Facsimile: 01794 518108
Email: sales@michaelrhodes.co.uk
www.michaelrhodes.co.uk

Estate Agents

Selling Property in Braishfield and
other Test Valley Villages

Tel:- 01794 514455 Fax:- 01794 518108

Website:- www.michaelrhodes.co.uk
E-mail:- sales@michaelrhodes.co.uk

View our Property List on line



Braishfield Horticultural Society

The year is moving on at what appears to be an ever increasing pace and already we find ourselves half way through our annual programme. So far, our meetings have been of the usual high standard and there can be no doubt that they will continue to be so.

Our April meeting was quite a change from the norm, the subject being Woodland Management. Not only was the subject unusual, but the manner of presentation was quite different. It turned out to be a family affair. Kester and Chris Wastcott were the nominated Speakers, but it turned out to be Mum, Dad and Son. Mother and Son concentrated on the woodland management side of things, whilst Dad spoke briefly about his charcoal burning activities. It proved to be a very interesting subject from which we learned a lot. Mum was the surprising member of the family, her knowledge of woodland matters gave the impression that she had spent her lifetime in the business. In fact she had spent her working life in what we refer to loosely as "High Tech"

Moving on into May, we welcomed, not for the first time, Bryan Madders, whose subject this time was Chrysanthemums. Once again we enjoyed an interesting talk by a man who is obvious passionate about his subject. Bryan's one aim is to encourage more of us to grow his favourite flower. Apparently over the years the number of growers has

dropped from around 80/90 % to less than 20%. It is a native of China and also the nation flower of Japan. That must be one of the few things they agree to share together. Bryan proved his point about the shortage of growers at the end of his talk, by asking how many of us grew chrysanthemums. Only one hand was raised, that of our Chairman, Steve.

The following month was once referred to as "Flaming June". It does feel that it was a very long time ago that it lived up to its reputation, but fingers crossed, let us hope for the return of brighter times, as this is the month of our annual outside garden visits.

Two venues have been booked, one small and one large garden. The first trip will be to Atheling Villas, Hythe, the smaller one of the two and will be on Tuesday 18th June. The second is to Ordnance House, West Dean, near Salisbury, on Tuesday 25th June. Suitable supper venues have also been arranged for each occasion. Full details are available, from me, in the form of a leaflet.

The Annual Flower Show takes place on Saturday, 13th July. The schedules are included with this magazine and hopefully we look forward to a well supported event. Among other things, do remember the photographic section for the Girlie Old Cup. You may remember that we announced the theme of "Clouds" as the subject. There are plenty of those around these days.

Once again, we would welcome offers of Plants, Produce, Books, CD`s etc for our stalls, the sales of which go towards covering the cost of running the event.

With regard to entries for the Show, please take note of the following; **All entry forms must be handed to Margaret O`Keeffe by Monday 8th July, together, with all Cups & Trophies.** We have brought the entry date forward a couple of days earlier than usual, in order to create more time to organise things. There is a great deal of work involved in the preparation, most of which is down to Margaret. Nicely polished cups would be very much appreciated.

Later in July, another Open Garden Day has been arranged for Sunday 21st. Details can be found on page 10 of this magazine. The event is

restricted to Villagers and their Associates only. Your support, which last year produced a healthy sum of money which was donated to local worthy charities, will be very much appreciated.

Finally, make a note of the date for our next meeting, which will be Tuesday 10th September when Sandy Worth will be with us to talk about Garden Ponds. Meanwhile, please support the garden visits in June and the Flower Show and Open Garden Day in July. In August you can relax and do your own thing, like basking in the sun. You never know, it may be with us one day.

Bob Thomson,
BHS Secretary & Scribe.



Landscape Contractor

Hard & Soft Landscaping

Website: Stickley-Landscapes.co.uk

Email: Kevin@Stickley-landscapes.co.uk

01794 368694

07770 452631

HAZELWOOD, CROOK HILL, BRAISHFIELD

ROMSEY, HANTS. SO51 0QB


Family run business for 30yrs

MASSAGE THERAPY
SPORTS

Christine Saunders
Dip FTST

- Relief from Muscle Soreness ♦
- Promotes Recovery ♦
- Improved Flexibility ♦
- Aids Performance ♦
- Helps disperse Lactic Acid ♦

Professional Mobile Service
Call **07808 173378**



PREMIER
Soothe the pain away...

I am a Sports Massage Therapist and will be running clinics at Braishfield Beauty at the Dog and Crook on Mondays and Thursdays.

I am also offering massage at the forthcoming Beer Race in June.

Please call direct for an appointment.

07808 173378

PURESTRETCH CLASSES

**IMPROVES FLEXIBILITY
RELEASES MUSCULAR TENSION
DEVELOPS CORE STRENGTH
REDUCES MENTAL AND PHYSICAL FATIGUE
RESTORES ENERGY
CALMS THOUGHTS
SUITABLE FOR ANY AGE GROUP
EASY TO FOLLOW
SOCIAL AND LIGHT HEARTED**

PLEASE CALL YVONNE ON 07766304818 OR EMAIL TO:
vonnypilates@gmail.com

AND REGISTER YOUR INTEREST. ALL YOU NEED IS A PILATES/YOGA MAT.

**THE CLASS WILL BE HELD IN THE CHURCH ROOMS ON TUESDAY MORNING FROM
10.00am – 10.55**

THE COST WILL BE £6.50 PER SESSION OR £25.00 FOR BLOCK OF 4

Take a look-access Purestretch on website: www.purestretch.co.uk

GARRETT

CONSTRUCTION

Braishfield's Builder

All manner of building work undertaken
In need of a quote? Please ring Mark or Steve

on 01794 368280

E-mail: markstevegarrett@hotmail.co.uk

See work we've done in the Village

www.AbbeyParkCars.co.uk
Ben Holdaway

Genuine vehicles reasonably priced
View website for latest stock

Unit C8
The Premier Centre
Premier Way
Romsey SO51 9DG

Tel:- 01794 830373

E-mail:- ben.holdaway@btconnect.com



Donations to Braishfield Village Association News

We would like to thank all those who donated toward the cost of the Braishfield News last year. We hope that the content of the News makes good village reading and keeps you up to date with events. We do not run it on a subscription basis but we obviously incur costs to publish. We would welcome any support you can give to keep the News viable during 2013 and we would like to thank those who have already helped us this year. If you wish to make a donation please complete this slip and forward it to the address below and please make cheques payable to Braishfield Village Association.

BVA Treasurer
Mrs Sheila Still
Orchard View
Braishfield
SO51 0QB

Tel: 01794 368384
email: -_bva@f2s.com

Thank you.
David Robinson - Chairman

I enclose a donation of £ _____ towards the running costs of the BVA.

Name (please print)

Address

.....

Postcode

Tel:-

Email address:

As an alternative a Standing Order form to make annual donations to the work of the Braishfield Village Association is available. Please contact the Treasurer, Sheila Still, and she will send you one.



PB Carpentry and Building **expertise** covers all types of **Carpentry and building work** projects from start to completion including:

Extensions	Wooden Flooring
Bathroom installations	Decking & verandas
Roofing	Fitted wardrobes
Loft conversions	Stairs & Balustrades
Windows	Shelving units
Renovations	General repairs/Maint
Internal & External Doors	Garden walls
Bespoke cabinet making	Removal of internal walls
Fire surrounds	Block paving/driveways
Kitchen installations	Refurbishments

All **building work** is carried out by our fully **qualified and highly skilled** team of specialist tradesmen. We pride ourselves on the **quality** of our work, completing the job efficiently with the **minimum** of disturbance to our clients and all at a **competitive price**. Our previous **clients are happy** to speak to potential customers should you require a **testimonial** of our work.

For a free quotation/advice
Mob: 07824 731836 Tel: 023 8086 5300

Email: phill@pbcarpentryandbuilding.co.uk
Webpage: www.pbcarpentryandbuilding.co.uk

National and Domestic Security

Fertiliser

In the last month two reports have been received involving the theft of fertiliser. Whilst these have not occurred in Hampshire, and their intended use is not known, it provides an opportunity to raise awareness once again about the use and storage of fertiliser.

Terrorist groups around the world use fertilisers to make explosive devices. The majority of these devices contain ammonium nitrate based products, combined with other materials to produce explosives. Even in relatively small quantities, ammonium fertiliser-based explosives can cause great destruction. Many of the most notorious terrorist attacks of the last 15 years - from Oklahoma City to Omagh - used this formula.

The UK has a history of these attacks dating back to the early 1970s. The Northern Ireland 'troubles' saw both Republican and Loyalist terrorist groups deploying devices containing fertiliser which resulted in significant fatalities, injuries and damage. More recently, dissident Republican groups such as the 'Real' IRA (RIRA) and the Continuity IRA (CIRA) have rejected the Good Friday agreement and still pose a serious threat to the UK mainland and Northern Ireland.

International terrorists also pose a significant threat to the UK and UK interests abroad. The events of 7th July 2005 in London demonstrate both the capability and intent of groups in launching attacks that are either

inspired or coordinated by radical, extremist groups based overseas such as Al Qaida.

It should be noted that these attacks combined (both UK and overseas) have killed over 700 people and caused billions of pounds worth of damage, but used a total of less than 12 tonnes of fertiliser; this is only about half a lorry load.

Please make every effort to store fertiliser away from public access, never leave it in a field overnight and always store it out of view from public areas. Wherever possible store it inside a locked building, carry out frequent stock checks and report any unexplained stock discrepancy/loss/theft to the police IMMEDIATELY.

Domestic Equipment/Tool Theft

These thefts happen all too often, but be aware that the police frequently catch thieves (gangs) and recover stolen goods. However, with no record of ownership, they cannot return the items to the owners. Therefore please make a record of all the details of any valuable items you possess so that you can pass that to the police in the event of theft. This should ensure that you will get your 'recovered' item back! And keep your premises secure: it all acts as a deterrent to thieves.

Louise Hubble, Country Watch Sgt.
Lyndhurst Police Station, Pikes Hill,
Lyndhurst, Hampshire. SO43 7NR.
Mobile: 07554 775620, E-mail:
louise.hubble@hampshire.pnn.police.uk



I D Knight

Specialist Tree Surgeon Ltd

Advice and surveys carried out
Professional service in all areas
Estate Maintenance
Logs, Wood chip, Hedge cutting

Dairy Cottage, Dummers Road,
01794 368794 or 07500 968373

Email katel.knight@googlemail.com



PLUMBING & HEATING SERVICES

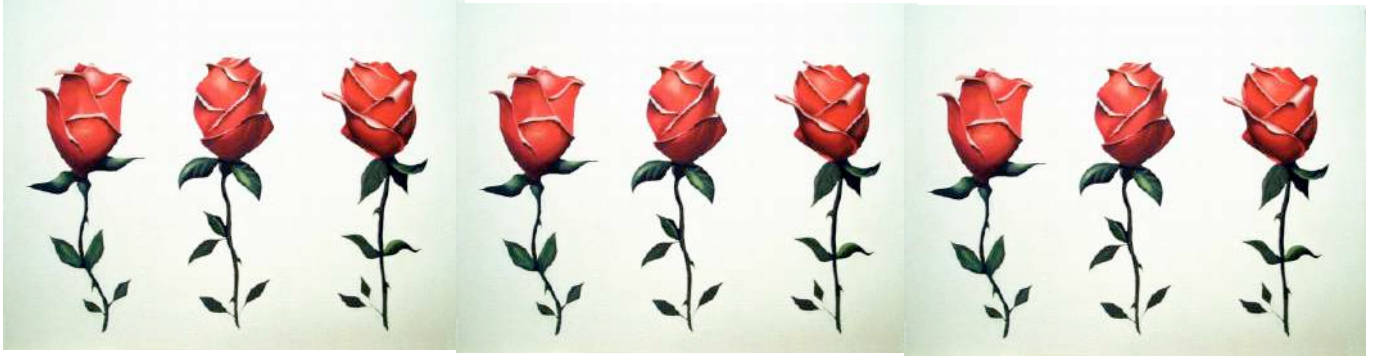
Los Pinares, Sandy Lane, Belbins, Romsey, Hants SO51 0PD
Tel: (01794) 368091 • Mobile: 07801 661497

Oil Boiler Specialists

Installation, Servicing and Repairs.
OFTEC Registered. Oil Tank Replacement.

**All Plumbing And Heating, From A Tap Washer, To Full
Central Heating.**

Power-Flushing Solar Heating
Underfloor Heating Full Bathroom Installation
Over 25 Years Experience



In support of St. Andrew's Church, Mottisfont

Roses and Wine

Midsummer evening – June 21st Mottisfont Abbey, Mottisfont –
Famous walled Rose Garden

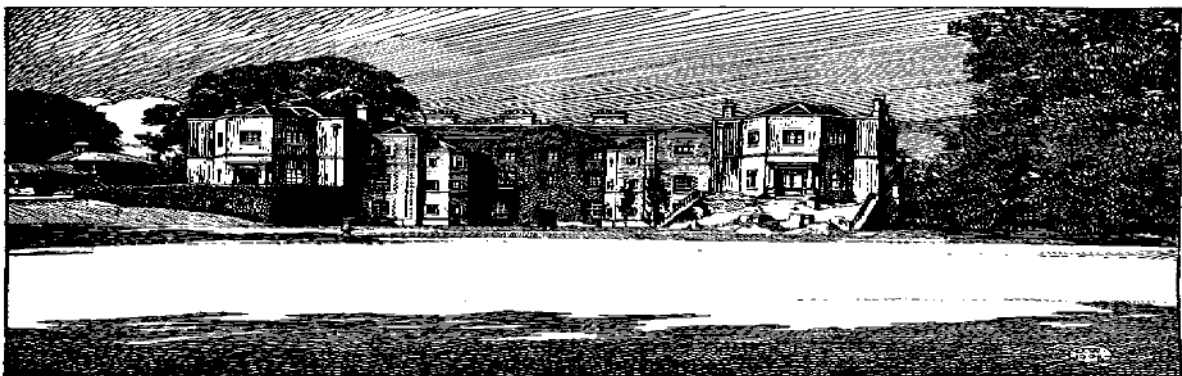
6:30 – 8:30pm

£10 pp (£6 for U16's, OAP's and Students)

A unique and exciting opportunity to see the famous Abbey Gardens which are open for one evening for your enjoyment.

Meet David Stone, Head Gardener for Mottisfont Abbey

- Ask him your rose growing and gardening questions.
- Have a glass of wine
- Raffle



Braishfield Village Hall

Flexible space available for social and sporting activities, clubs and groups at reasonable rates.

Email katel.knight@googlemail.com

Tel: 01794 368173

Special Rates for Children's Parties!

Braishfield Flower Arrangement Society

Programme 2013



**Meetings held in Braishfield Village Hall
4th Thursday in the month at 7.30pm**

- June 27th 'Funky Festivals', Pamela Welch
July 25th Summer Party in The Church Rooms
September 26th 'From City to Village', Helen Gibbons
October 24th 'It's a Gift', Ann Marie Dicker
November 28th OPEN EVENING - 'A Carol for Christmas'
Michael Bowyer, NAFAS National Demonstrator

Further information available from Denise Bright 02380
741299 or Eileen Norman 02380 731162

Rubbish News

Recyclable materials in cardboard boxes left beside the brown bin on recycling weeks will be collected throughout the year.

Recycle weeks beginning: 3rd & 17th June, 1st, 15th & 29th July

Household waste weeks beginning: 10th & 24th June, 8th & 22nd July

Garden waste green bags are collected the same week as household waste, every other Friday morning.

Braishfield Village Diary

June

4th	Tuesday	7.00	Braishfield Parish Council
9th	Sunday	2 - 4	Braishfield Cream Tea Marquee on Recreation Ground in aid of Hants and IoW Air Ambulance
10th	Monday	12.00	Village Lunch in Church Room – All welcome
27th	Thursday	7.30	Braishfield Flower Arrangement Society Pamela Welch – Funky Festivals
29th	Saturday	08.00	Armed Forces Day – Flag raising - Village Hall Car Park
		12 – 4	Braishfield School Summer Fayre

July

1st	Monday	7.30	Five Alive Fellowship - Church Room
2nd	Tuesday	7.00	Braishfield Parish Council
8th	Monday	12.00	Village Lunch in Church Room – All welcome
13th	Saturday	2 - 4	Annual Flower Show
		2 - late	Party on the Recreation Ground followed at 6.30 by Barn Dance – see Notice Boards for more details
17th	Wednesday	1.15	Mobile Library on VH Car Park – Use it or lose it
21st	Sunday	1.15-1.45	Open Gardens Day - see article in June News for gardens open
25th	Thursday	7.30	Summer Party in the Church Rooms

August

14th	Wednesday	1.15-1.45	Mobile Library in Village Hall Car Park
------	-----------	-----------	---

Weekly

Wednesday	10.00 – 12.00	Braishfield Toddler Group, Tel. 367710
Thursday	10.00 – 12.00	Braishfield Art Group

All functions take place in the Village Hall unless otherwise stated
Please refer to Braishfield.org or your Residents Guide for contact telephone numbers.
Details to the BVA News Editor or Web Editor if you would like dates of forthcoming events to be published.