

## Braishfield Village Diary

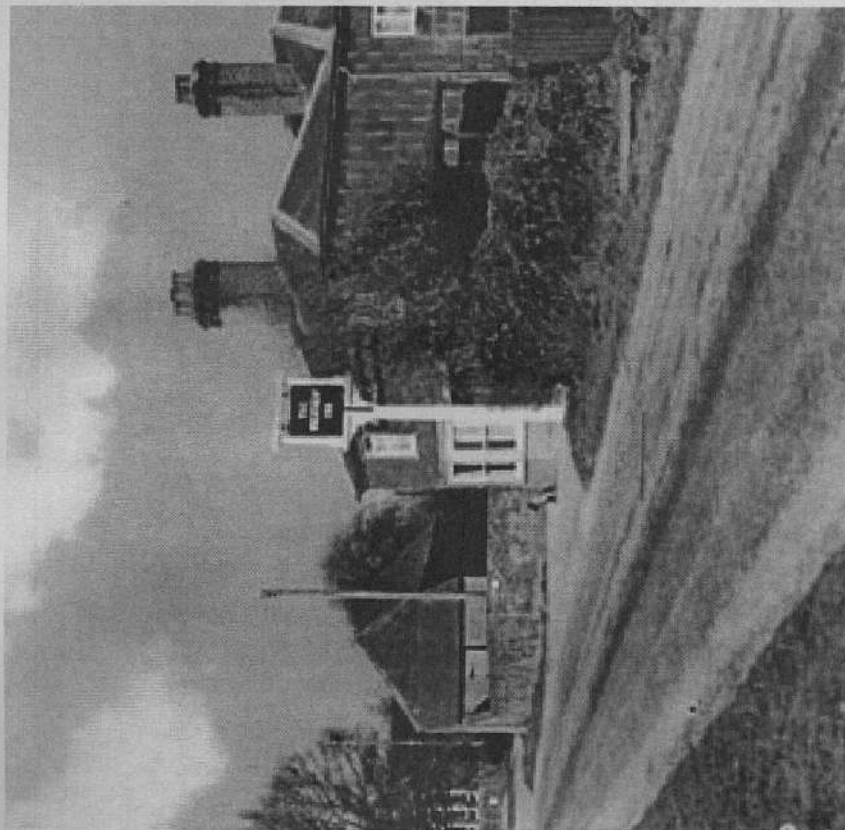
February	
3	Fri PM School Assoc Race Night See main ad page 14
13	Mon 12.00 Noon Lunch Club in The Church Room
14	Tue 7.30 pm Horticultural Society
15	Wed 11.00 am Police presence
28	Tue 7.00 pm Braishfield Parish Council
March	
2	Thur 7.30 pm Braishfield Village Hall AGM
13	Mon 12.00 Noon Lunch Club in The Church Room
14	Tue 7.30 pm Horticultural Society
15	Wed 11.00 am Police presence
28	Tue 7.00 pm Braishfield Parish Council

All functions take place in the Village Hall unless otherwise stated.  
Please send details to the Editor if you would like dates of forthcoming events published.

# BRAISHFIELD

## Village Association NEWS

Issue 155 February 2006



Distributed free of charge by the Braishfield Village Association  
to the residents of Braishfield and the surrounding hamlets

## Braishfield Village Association

### Committee 2005-2006

Chairman	-	George Elliott	368306
Secretary	-	Rosie Groves	368178
Treasurer	-	Sheila Still	368384
BVA News Editor	-	Mike Stevens	367801
News Distributor	-	Ros Chaplin	368483
Committee	-	David Protheroe	367003
		Graham Bennett	368109
		Margery Randall	367738

### Editors Notes

This magazine is produced by the Braishfield Village Association and the Editor reserves the right to elaborate, withhold or abridge material as space permits. The views expressed in this Magazine are not necessarily those of the Editor or of the Braishfield Village Association. Any form of reproducing or copying of this publication requires the prior written permission of the Editor. © Braishfield Village Association 2006

Written items for the 'News' should be sent to:-

The BVA Editor

Kendal

Crook Hill

Braishfield

Romsey SO51 0QB by the date shown below.

Copy may be hand written, typed or on floppy disk but, ideally, by e-mail to [news@mikopy.com](mailto:news@mikopy.com)

All items for publication must show the name, address and telephone number of the originator. Letters to the Editor should be on topics relevant to the villagers of Braishfield. The BVA attempts to deliver a copy of the Braishfield Residents Guide and the Village Design Statement to all new residents. If you have not received these publications please contact the News Distributor, Ros Chaplin on 368483

Latest Copy date for the April issue is  
Wednesday 15th March 2006

## From the Chairman

to us all to play a part in 'life' around us and make it better, particularly for others.

The Rev Ron Corne from Broughton with Bossington, Houghton and Mottisfont will succeed the Rev Canon Bruce Kington as Rural Dean in February. Bruce has held the role for ten years. He has acted as a channel of communication between parishes and the Bishop of Southampton and has provided pastoral care for families in the deanery and encouraged parishes to support each other. We appreciate all that Bruce has achieved, with Lucy's loyal support, in duties which are immeasurable and never complete but no doubt very rewarding.

A good many of us are traditionalists. We have seen many changes in our way of life over the years which have not turned out for the better. So it may be in the latest change we face? On 1 January, Royal Mail, began the New Year with the loss of its 350 year old monopoly of delivery to twelve new competitors. The regal red boxes that decorate the landscape, reminds us of the influence Royal Mail has had on our culture and village way of life by encouraging a common language of addresses and open markets everywhere. It is an asset that

We were fortunate that both December and January were not so cold after all, as had been threatened, and we were spared dangerous roads and freeze ups. Now that the shortest day is long behind us it is all down hill until spring and summer. February is here already and we have much to look forward to - the moment for me is the first glimpse of snowdrops.

Congratulations to Lawrie McMenemy on his New Year Honour of the MBE for services to sport and charity. To be recognised on and off the field of play is certainly an achievement to be proud of, particularly over a span of thirty years endeavour. Everyone of that day remembers the Wembley victory of 1976 over Manchester United! Few will have realised how his good work in other fields has spread across numerous charities since then. Lawrie has been President of Age Concern Hampshire for the past six years and lent his support to other charities; Wessex Heartbeat, Hampshire Autistic Society, the Road Race Association for the actively disabled, Leukaemia Busters and AAIR and Home Start. Lawries' recognition is an encouragement

belongs to us. Over the years, we have valued receiving the post through our door and may that long continue. Thank you to the three - Pip, Rodney and Shane for the service we receive almost everyday of our lives.

The rush into the New Year has left most of us slightly breathless. It made me think, yet again, how lucky we are in this country to have such quantities of good radio where excellent music abounds, broad discussion made welcome and imagination and ideas boldly pursued - all to be enjoyed from an armchair and perhaps, even while at the kitchen sink! This is just what I needed in January to

recharge my batteries.

I hope you made good use of the first 'leap second' in seven years at the start of 2006 - a tweak imposed by scientists to coordinate atomic clocks with the slowing of the Earth's rotation. An extra second spent wisely in pursuit of happiness is never wasted. I know exactly where the majority of my friends were at that moment and I am sure, in that time, not a 'drop' was wasted!

George Elliott  
Chairman

## Your Letters

Over the past few weeks I see by the bins/bags outside houses that many people are confused when there is a recyclable collection and when there is a green bag collection. People even get confused when there is a bank holiday on a Monday as to which day to put out the wheeltie bins!

May I suggest the BVA news lists the various weeks telling people what days/weeks the recyclable and green collections are for the 2 months covered by the magazine. Other village magazines carry this information with great effect.

Yours etc

Colin Kemp

Great Idea Colin. Bin Times will become a regular inclusion  
Ed

Dear Sir,

I would write with the intention of clarifying the Football Club's position regarding the proposed refurbishment or replacement of the pavilion on the Recreation Ground; support from within the village has been somewhat limited to date, and this may be because our motives have not been emphasized strongly enough. Up until about 4 years ago, we had managed to sever almost all ties with the village - the number of adult footballers with any local connections had fallen to zero, and only a few committee members lived locally or could claim any longstanding loyalty to the Club. Needless to say, any affinity, which may have once existed towards the Club from the village, had long since disappeared.

The situation today however is much different - we have a thriving junior section to me Club with very strong connections to the village - 12 of the under 14 squad are former pupils of Braishfield School, and better still 7 of the under 9 squad actually live in Braishfield. You need to go back over half a century to find the last time there were that many villagers in the team!

The Club's wish is that it becomes an integral part of village life once again, and we believe this means having members who live in the village or have strong connections with it, and by providing shared use of facilities for anyone who uses the Recreation Ground. For example the school uses the ground almost every day.

The current pavilion is totally unsuitable for this purpose; even notwithstanding the poor state of repair the layout and facilities available are not appropriate for use by children, women or the disabled.

Several other villages have already been successful in creating a new

**Mikopy** Ltd for Anything in the Office With a Plug On

### **New Year Specials**

**Digital Cameras from £59**

**Multimedia Flat Screens from £119**

**Full computer Systems From £349**

**Flash Drives from £8**

**MP3 Players with FM radio from £25**

**25 spindle CD-R 80 min from £4-99**

**Computer Repairs, Spare Parts and Software**

**Tel: 01794 511114**

E-mail [mike@mikopy.com](mailto:mike@mikopy.com) Fax 01794 511116

Established 1997 Member of The Romsey Chamber of Commerce  
Unit 25 Abbey Enterprise Centre, Premier Way, Romsey. SO51 9DF

sports and recreation facility on then-common ground of which they can be very proud; Compton and Twyford are 2 very good examples of these. Our football club celebrates it's centenary in 2007 - we are clearly very proud of this but it would mean so much more if the village joined us in that celebration. I hope this has clarified our position.  
Yours faithfully

**Adrian Moore**  
Chairman, Braishfield Football Club

#### CANGO DOES FOR EVERYONE

Sir, - In response to recent letters in the Romsey Advertiser about the eligibility and ease of use of the new Cango bus services, I would like to clarify the following points. The Cango bus service is a flexible bus service which has a fixed start and finish and a flexible roam zone in between. It offers flexibility and is responsive to users requirements. Journeys can be tailor-made by prior arrangement within the roam zone. The Cango bus service can be used by anyone: it is a commercial bus service. It is not just limited to disabled passengers, although the vehicles offering the service have low floors and are accessible to wheelchair users. Pre-booking of the service is essential: book your journey in advance! You can book right up until the service has commenced. To make a booking; call 0845 6024135 between 8am and 6pm Monday to Friday, and 8am to 4-30 pm on Saturdays. Further information is available from <http://cango.hants.gov.uk> or email [pt.demand.centre@hants.gov.uk](mailto:pt.demand.centre@hants.gov.uk) I hope this helps to make clear how to use the Romsey

Cango service and that many readers will make use of this new and demand-responsive service.

*Yours etc,*  
CLLR Martin Hatley  
Deputy Leader/Planning and Transport Portfolio Holder  
TestValley Borough Council



## From the Editor's Desktop



I would like to make some other additions to the news including the following.

### Your Child's drawing on the front page

Just send me a copy of the picture on a single sheet of paper and I will put it on the next issue with your child's first name and age. This will be on a first come first served basis and is only open to children from the village.

### Social Calendar

Will pub landlords, event co-ordinators and any other body in the village who is planning any social event please let me have details of the events to be held in April and May. These can include anything that is open to the general public, free or with cost. If the organisers wish they may pay for a larger advert for their special event.

### Your own easy quiz

Do you think you can fox the residents of Braishfield? Send me your 10 questions with the answers for inclusion on the fun page.

Mike Stevens  
Editor  
367 801 [news@mikopy.com](mailto:news@mikopy.com)

### Bin Collections

Bins are emptied in Braishfield on Wednesdays. If a bank holiday falls on a Monday, The bins are generally emptied on a Thursday.

Recycle Bins are Emptied Fortnightly.

Dates for Recycle Bins

8th & 22nd February

8th , 22nd & 29th March

Waste Collection will be changing Please read the report on Page 10

## Braishfield All Saints Church and Community Appeal



chef, gave a demonstration in the Village Hall entitled 'Food With Flair'. Not only did we learn some of the secrets of his trade but we were all given tasters of the delicious food that he cooked and a few lucky raffle winners were able to take home some of the menu examples. The event raised £473.00.

Our grateful thanks to all those who supported these events. We are waiting for planning permission to be granted for the construction of the disabled entrance to the Church. Tree work in preparation for this entrance will begin in March.

### FORTHCOMING EVENT

On Friday February 24<sup>th</sup>, at 7.30 p.m. in Braishfield Village Hall, Professor David Brown, former professor of musicology at Southampton University and internationally known writer and broadcaster will be presenting AN EVENING WITH MOZART (Plus Don Giovanni's Ladies) Many of you will remember David Brown's most successful 'Celebration of Elizabethan Music' held in 2004. This time he returns to take us back to the world of Mozart. He writes: What to talk about? In fact, the answer created itself. In 2006 we celebrate the two hundred and fiftieth anniversary of the birth

**D**uring the autumn of 2005 we held three very different fundraising events in aid of the Building Project. In September, in the Church Room we held an Auction of Promises which included Supper. Andrew Lalonde kindly agreed to auction the promises and with his usual inimitable style persuaded everyone to bid, raising a total of £2675.82.

An evening entitled 'A Stab in the Dark' was held in the Village Hall in October. Some 60 people enjoyed supper and a very entertaining talk given by three crime writers who explained how they invented their characters and what prompted them to write about grisly murders. Volumes Bookshop kindly donated raffle prizes of books by the three authors. A total of £986.40 was raised.

In November David Protheroe, our own well known Braishfield

of 'the divine Mozart' and in June (14<sup>th</sup> and 16<sup>th</sup> at The Mayflower in Southampton), there are two performances of his splendid opera, *Don Giovanni*, considered by Tchaikovsky as the greatest of all operas.

There are three women whom Don Giovanni, better know to us as don Juan, attempts (but fails) to seduce. All are very different. But how does Mozart catch their characters into music? How does he tell us not only about their feelings, but uncovers something of their personalities? It's all in the music, you know - and I'll try to give some pointers as to what these signals are.

But this will not make up the whole evening, for *Don Giovanni* also contains one of the most awesome scenes in all opera

when the failed seducer finally gets his come-uppence. And yet, this terrifying judgement having been executed, the opera's ending is as cheerful, even frivolous as any. Bad taste? No. It's simply that Mozart saw his job as the presentation to us of life in all its aspects, good or bad, cheerful or sad, desirable or despicable. He does not lecture us: like it or not, that's reality for you, he would have argued - and this clearheaded objectivity is just one clue to his greatness. In any case it is *only* an opera, even though it may be a candidate as the greatest ever written.

Juliet Edwards  
Jane Bennett

## Police Presence in The Village

As some of you may have noticed, there is now a monthly Police presence in the village. The Police will visit the village hall car park on the following dates

15th February and 15th March for two hours  
If you have any concerns or policing questions, please use this opportunity to ask

## TVBC Report on Alternative Waste Collection

The Council is changing the way it collects waste in Test Valley to improve recycling rates and reduce waste collection costs. The changes will start in two early rounds in February 2006, with the rest of the borough joining the new alternate bin collection scheme in two phases in September and December 2006.

### Background

The growing volume of rubbish we all create means that waste collection and disposal are high-priority issues. The obligation to manage waste now and in the future is a shared one. It is important that everyone thinks about how they can reduce the waste they create and recycle as much as they can to help cut the volume of waste that goes to landfill sites and incinerators.

### Targets

The government has set Test Valley a 30% recycling target for all household rubbish collected. The Test Valley recycling rate is currently 20%. The government's target won't be achieved unless action is taken. Put simply, more people must recycle more of their waste, so the Council is looking for the most effective way to achieve this.

### Timing

Although Test Valley's current waste collection methods were once leading the way in the UK, things have moved on. The Council's waste collection vehicle fleet

is now reaching the end of its useful life and is becoming increasingly expensive to maintain. Our waste collection service is now the most expensive in Hampshire.

### Advice

Expert waste management consultants, Indecon, were asked to make an independent review of how the current system works and to recommend options for the future.

### Options

Three options were proposed. The first two options were adaptations of the existing Test Valley waste collection system. They offered increased recycling rates, but not enough to achieve our targets.

The third option involved more significant changes to provide an alternate bin collection service with recyclable waste collected one week and household waste on the following week. Every household is provided with two bins of a suitable size, one for material that can be recycled and one for household waste.

The Council has chosen the third option because it is the only one of the three options that has been shown in other areas to really make a major difference to recycling rates. At the same time it is predicted that this new approach will reduce the cost of collecting waste from every Test Valley household from £60 to less than £47 per year.

### Communication

The Council recognises that residents will have concerns about the change in their household routines that this new approach will bring, and understands the need to listen to members of the public and address their concerns. Communications with residents will include:

Advice on new waste collection arrangements, which will be made widely available through household visits, recycling help lines and the website.

Support for householders during the transition period.

**Some facts about household waste in Test Valley:**

Approximately 1 tonne of household waste is collected per household per year in Test Valley.

with approximately 46,000 households in Test Valley, the weight of household waste collected each year is therefore equivalent to two of the Royal Navy's aircraft carriers

the current national growth rate of household waste collected is 2.5%.

across Hampshire local authorities are working towards a 40% recycling rate by 2010.

the cost of waste collection in Test Valley in 2003/2004 was £60 per household per year.

### ABC questions and answers

#### WHAT WILL CHANGE?

Recyclable materials such as paper, card, plastic bottles, tins and cans will be collected one week and household waste will be col-

lected the following week the collection day will be the same each week (subject to Bank Holiday working arrangements) each household will be offered two 240 litre bins - one for recycling and one for household waste larger families can ask about more bin space smaller bins will also be available.

#### WHEN WILL THE CHANGES BE MADE?

The new alternate bin collection system will be introduced in two areas in February 2006.

One of the first two areas to join the scheme will be in the rural areas around Andover, the other will be in the mainly urban areas of Nursling, Rowhams, North Baddesley and Valley Park.

residents will receive information from the Council through the post before their collection arrangements change.

The experience gained and feedback from householders in these areas will be important as the new service is extended to the rest of the Borough later in the year.

#### What will happen to any savings?

initially there will be significant costs to set up the new system. Once established the new collection method will be cheaper.

these cost reductions will provide Councilors with options to consider at a later date, either to ease some of the financial pressures on public services provided by the Council or to introduce new initiatives that otherwise

might not be possible.

Will the household waste bin smell and attract flies and rats?

Experience in other areas that use the alternate bin collection system has shown that by following some simple steps these concerns can soon be addressed:

Wrap (or double wrap) particularly smelly waste such as nappies, food waste or unwanted dog/cat food is before it is put in the bin.

Place a newspaper in the bottom of the bin to help keep the bin as dry as possible.

Keep the bin lid shut and where possible.

Keep the bin out of the direct sunlight to minimise any problems with flies.

Keep all waste in the bins provided to stop rats, birds, cats dogs and other animals from disturbing it.

What happens if I can't fit all my waste in a 240 litre bin?

With good management the average family should find that a 240 litre bin is big enough for their needs.

It is estimated that some 60% of the volume of household waste is recyclable.

By making maximum use of the recycling bin supplied, and the network of recycling sites around Test Valley, particularly for glass, householders are expected to have plenty of space in their bins residents can also consider ways to reduce their overall volume of

waste, such as using reusable rather than disposable nappies. Home composting is a good way to manage kitchen vegetable scraps, cut flowers, garden waste and small amounts of card and paper.

Flattening all containers, cardboard, and cans will make best use of the available space.

Waste can also be taken to the Household Waste Recycling Centres at Bunny Lane near Romsey or Shepherds Spring Lane in Andover.

Extra bins may be available for larger families.

## **Do You Have An Interesting Article For**

**The News  
Please send it to**

**The Editor  
Kendal  
Crook Hill  
Braishfield  
SO51 0QB**

**Or E-Mail to  
[news@mikopy.com](mailto:news@mikopy.com)**

## **KINGTON CONTRACTING**

Property Maintenance  
(Residential & Commercial)

Painting & Decorating

Tiling & Wallpapering

House & Garden Clearance

Window Cleaning

Fascia boards & Gutters Cleaned, Repaired & Replaced

Ground Works & Drainage

Plus many other areas of maintenance work carried out

Ben Kington

Telephone : 01794 368536

## **Barleywood**

Garden Designs

A Professional Qualified Service  
Design to Completion

**Alan Smith**  
(Dip GD)

**01794 368928**

A Date for your diaries!



**RACE NIGHT**  
**Friday 3<sup>rd</sup> February 2006**

at Braishfield Village Hall  
Tickets £5.00 in advance from School office

or £6.00 on the night

To include curry & rice supper.

Licensed bar available.

Great fun! Bring all your friends!

Braishfield School Association.

Donations for the Braishfield Village Association

We hope everyone enjoys receiving the Village News and the residents guide, hand delivered to nearly all houses in Braishfield and surrounding Hamlets.

The News is produced on a tight budget and although the advertisers cover the main cost of printing the news, there are other costs associated with running the BVA and our dedication with help for good causes within the village.

Your help could make the village a better place.

If you would like to make a donation, please send a cheque payable to "Braishfield Village Association"

Many Thanks from The BVA Committee

**Anthony Richard Michael Fielder - 1943 - 2005**

"Shiner was born in Braishfield on 14th September 1943 at Lower Street. He was the 5th of 9 children to George and Edith Fielder.

He lived in the village for most of his life. He attended the village school until 14, and then spent his last school year at Romsey.

He loved the outside and would often be found with his brothers and friends climbing trees or playing at Popley Hill.

He did the village paper round and when he left school, worked at Pitt Farm for a while.

He then worked with a tree felling gang. They worked all over the country clearing area mainly for pylon construction. He loved his job as it meant he was in the open air.

He later went to work for Strongs Brewery. He drove HGV lorries for over 30 years. During that time the brewery changed it's name many times and is now well known as Whitbreads.

Shiner retired in the summer of 2003. He went back to working in the open air, clearing wooded areas and beating.

He was a regular visitor of the social club and had many drink ink pals.

He was a very special brother, uncle and friend. He will be sadly missed by all who knew him, especially his family

Karen Garland. Neice

Seasoned Hardwood Logs



Locally grown Timber

cut and split to your requirements

Tel:- 01794 368513



Some of the more urgent electrical work was carried out early in January, including a new light-switch box in the hall. Other electrical works may be instructed following the assessment of quotations. This work is likely to require the hall to be closed for a few days, and the summer school holidays would be a good time to plan for closure, more news later.

Maintenance to the roof and gut-tering on the east side are planned for when the weather and laborers permit. The revised 'Conditions of Hire' are now in use, and a copy can be seen on a notice board in the hall lobby.

The 26<sup>th</sup> Annual General Meeting of the Village Hall will be held in the Hall on Thursday 2<sup>nd</sup> March 2006 starting at 7.30pm

#### AGENDA

Apologies for absence  
Minutes of the last annual general meeting on 3<sup>rd</sup> March 2005  
Matters arising  
Treasurer's report  
Chairman's report  
Election of Committee Members - (3 required)

Standing:  
G Bennett,  
J Townsend,  
Election of Representative Mem-  
bers - (up to 10 allowed)  
Standing:  
M Edwards Parish Council  
E Elliott Parochial Church Council  
M O'Keefe Horticultural Society  
AOB

Date of next AGM  
This meeting is open to all in-  
habitants of the parishes of  
Braishfield, and Farley Chamber-  
layne, together with the hamlets  
of Casbrook Common, Crook Hill,  
and Slackstead. This is your  
meeting so please come and sup-  
port your Village Hall  
You will see that several hall us-  
ers are not represented on the  
committee as is their right, and  
we would welcome support from  
them at any time.

Anyone wishing to join the com-  
mittee should be seconded by an  
existing member, and register  
their interest before the 16<sup>th</sup> of  
February 2006. Nominations from  
the floor may also be considered  
at the AGM.

Chairman:- Michael Allison

# BRAISHFIELD VILLAGE HALL 26<sup>th</sup> ANNUAL GENERAL MEETING

Thursday 2<sup>nd</sup> March 2006 in the  
hall at 7.30pm

The meeting is open to all  
inhabitants of the parishes of  
Braishfield, and Farley

Chamberlayne  
together with the hamlets of  
Casbrook Common, Crook Hill,  
and Slackstead.

This is your meeting  
please come and support your  
Village Hall



# Stanbridge Earls School

Romsey Hampshire SO51 0ZS

## The Dyslexia Specialists

### Open Day

Saturday 4th March 2006 - 10am to 2pm

Tel: 01794 529400

[www.stanbridgeearls.co.uk](http://www.stanbridgeearls.co.uk)

## WestWood Turnery



Chris West

Woodturner



From replacement knobs to presents for someone special

Tel: 01794 512718

Email: [chris@westwoodturnery.co.uk](mailto:chris@westwoodturnery.co.uk)

Website: [www.westwoodturnery.co.uk](http://www.westwoodturnery.co.uk)

# An Evening with Mozart (plus Don Giovanni's Ladies)

An informal illustrated talk by Professor David Brown,  
writer, broadcaster and lecturer, former Professor of  
Musicology at Southampton University

Friday 24th February 2006

Venue:- Braishfield Village Hall

Time:- 7.30 pm

Admission £10

To include wine and refreshments

Tickets from:-

Jane Bennett 01794 368109

or Wendy Quarendon 01794 368015

In Aid of the All Saints Braishfield  
Church and Community Appeal

# Savills - for all your property needs

Residential sales and lettings  
Farm and estate management  
Farm agency  
Auctions  
Valuations  
Surveys

Savills Winchester  
Jewry Chambers  
Jewry Street  
Winchester SO23 8RW

Hume Jones  
Edward Cunningham  
01962 841842

**savills**

[savills.co.uk](http://savills.co.uk)

## Braishfield Horticultural Society

The Christmas and New Year Celebrations were no sooner over, when, on walking into a shop during the first week of January, I was confronted with the unbelievable sight of Easter Eggs on sale. Has the world really gone mad or has the passage of time moved up yet another gear?

Once again, The Horticultural Society's New Year has begun with the high membership level being maintained. In fact, despite the uncertain weather and the numbers of people afflicted by the current spate of colds and flu, our first meeting in January when Jeremy North was our speaker, was so well attended that the room was almost at bursting point.

Jeremy first spoke to us about two years ago and those of us present at the time will no doubt remember the pictures of the major project that he and his team had recently embarked upon. This time we found ourselves looking at a mature site that could well have been established for many years. What a transformation.

However, before viewing the finished article, Jeremy shared with us, the detailed planning that goes into such a project, together with the possible pitfalls that could prove disastrous. Another excellent

meeting that I am sure was enjoyed and appreciated by all.

Finally, Jeremy generously donated his fee for the evening to the charity, Tools for Self Reliance, which supports the less fortunate people of the third world.

The evening then rounded off as usual with tea, coffee and biscuits together with lots of chatter amidst a general party atmosphere. What a super way to start the year.

In February we welcome Dennis Bright once again, who on this occasion, will talk to us on the subject of Barn Owls. Dennis last came to us in April 2004 when he presented a talk on wildlife which he supported with some brilliant photography. In fact, we have one of his prints, a beautiful back lighted night shot of a fox, framed and hanging in our lounge. I have no doubt that we have yet another treat in store.

Moving on into March, Lyn Fomison will throw some light on the unexpected use of our weeds. Now that could be interesting. After all, we usually have plenty of them, they grow easily and require no cultivation. Just lay back in the garden and watch them grow.

April will bring the welcome return of Rob and Rosie Hardy, the award winning proprietors of



The Association of  
Building Engineers

## JEM MUSSELWHITE ASSOCIATES

Architectural Design &  
Building Consultancy

Fellow Member of The Association of Building Engineers

Preparation & Submission of Residential & Commercial Planning &  
Building Regulation Applications to Local Authorities

Building Inspections & Surveys      Structural Surveys & Reports

Structural & Thermal Calculations

Units 7-9 Pucknall Farm, Dores Lane, Braishfield, Romsey SO51 0QJ

Tel No: 01794 367776

Fax No: 01794 367775

[www.jem-musselwhite.co.uk](http://www.jem-musselwhite.co.uk)

[enquiries@jemmusselwhite.co.uk](mailto:enquiries@jemmusselwhite.co.uk)

Hardy's Cottage Plants from Whitchurch. Many will no doubt remember our June visit to their nursery a few years ago, when, on our return journey, we discovered the slip road onto the A34 was closed and we were diverted on a goose chase in total darkness around the countryside.

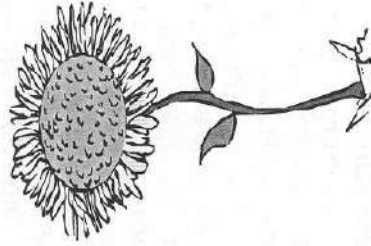
The Spring Show is also due at the April Meeting, when hopefully, the Hardy's will judge the entries. The schedule for the show can be found on the back of your programs, Let's make it a good one.

That I believe brings us up to date for the present. I could of course sit here staring into space as I often do, wondering what on

earth to write about, but instead gazing at a blank screen I'll see what rubbish there is to be found on that other "goggle box".

Happy days.

Bob Thomson  
BHS Secretary & Scribe.



## DURBAN HOUSE

Nursing Home

We provide care for the elderly in a friendly homely atmosphere with 24 hour Nursing Care

Please ring Matron on

**01794 512332**

Durban House Woodley Lane ROMSEY SO51 7JL



## DAIRY BARN FARM SHOP

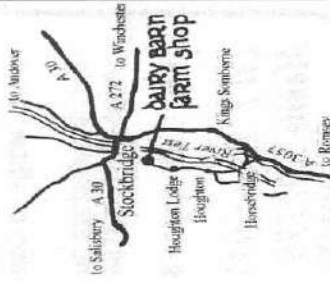
North Houghton, Stockbridge, Hampshire, SO20 6LF

Tel/Fax 01264 811405

Now open Tues to Sat 9.30 am to 6 pm

Webpage [www.dairybarn.co.uk](http://www.dairybarn.co.uk)

e-mail [dairybarnshop@aol.com](mailto:dairybarnshop@aol.com)



### Mail Order & Delivery Available

Recently received:- Hampshire Life Magazine's "Best farm Shop in Hampshire 2004 award"  
Rick Stein calls us his 'Food Heroes'!

We offer a real alternative to supermarket meat.

Come and experience our friendly service, our butcher is always happy to give you

## Hampshire Life's Best Farm Shop 2004



**Food For Friends** We can cater for all your needs at Weddings and Celebrations, Drinks and Dinner Parties.

We also offer a range of Home Cooked food for the freezer.

Sarah Keith  
01794 340707

Gayle Wilde  
01794 368311

## STICKLEY PAVING & LANDSCAPES

Family run Business for 35 years

All aspects of Landscaping  
from Design to Completion

We manufacture our own  
range of Paving Slabs

Free Consultation & Quotation

*Tel / Fax : 01794 368694*

*Mobile : 07770 452631*

- \* Patios
- \* Driveways
- \* Turfing
- \* Planting Schemes
- \* Low Maintenance Gardens
- \* Guaranteed Work



## Small Business Accountant

Small Business and Self Employed Accounts  
Taxation and PAYE

A Personal Low Cost Service

## Frank A Stokes

FMAAT

7 Newlyn Walk

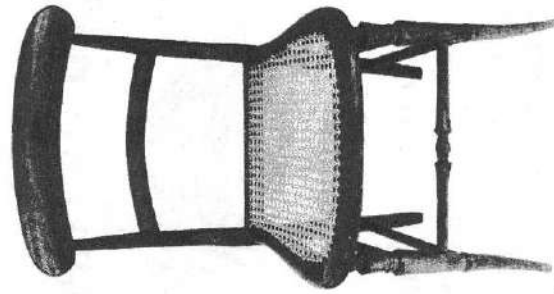
Cupernham Green Romsey SO51 7WB

Tel/Fax:- 01794 523754

## Chair Caning

Sue Savage

01794 367181



## Martyn Dennis

### Painter and Decorator

- Fully Qualified
- Interior and Exterior
- Over 10 years experience
- C.I.T.B. Registered



Tel:- 023 8026 9695 or 01794 501587

## Fun Page (40 Funny Film Facts)

- 1 It is always possible to find a parking spot directly outside or opposite the building you are visiting
- 2 When paying for a taxi, don't look at your wallet as you take out a note
- 3 Television news bulletins usually contain a story that affects you personally at the precise moment it's aired
- 4 Creepy music (or satanic chanting) coming from a graveyard should always be closely investigated
- 5 Any lock can be picked with a credit card or paperclip in seconds
- 6 If you decide to start dancing in the street, everyone you bump into will know all the steps
- 7 All bombs are fitted with electronic timing devices with large red digital displays so you know exactly when they are going to explode
- 8 Should you wish to pass yourself off as a German officer, it will not be necessary to learn to speak German
- 9 Once applied, lipstick will never rub off
- 10 The Eiffel Tower can be seen from any window of any building in Paris
- 11 Any police officer about to retire from the force will more often than not die on their last day (especially if their family have planned a party)
- 12 Getaway cars never start first
- 13 If staying in a haunted house, women should investigate any strange noises wearing their most revealing underwear
- 14 On a police stake-out, the action will only ever take place when food is being consumed and scalding hot coffees are perched precariously on the dashboard
- 15 All grocery shopping involves the purchase of French loaves which will be placed in open brown paper bags (Caveat: when said bags break, only fruit will spill out)
- 16 Cars never need fuel (unless they're involved in a pursuit)
- 17 If you are heavily outnumbered in a fight involving martial arts, your opponents will wait patiently to attack you one by one by dancing around you in a threatening manner until you have defeated their predecessor
- 18 If a microphone is turned on it will immediately feedback
- 19 Guns are like disposable razors
- 20 All single women have a cat
- 21 Cars will explode instantly when struck by a single bullet
- 22 No matter how savagely a spaceship is attacked, its internal gravity system is never damaged
- 23 If being chased through a city you can usually take cover in a passing St Patrick's Day parade at any time of the year
- 24 The ventilation system of any building is the perfect hiding place
- 25 You will survive any battle in

any war UNLESS you show someone a picture of your sweetheart back home

26 Prostitutes always look like Julia Roberts or Jamie Lee Curtis

27 A single match is usually sufficient to light up a room the size of a football stadium

28 It is not necessary to say "Hello" or "Goodbye" when beginning a telephone conversation

29 One man shooting at 20 men has a better chance of killing them all than 20 men firing at once (it's called Stallone's Law)

30 When you turn out the light to go to bed, everything in your room will still be visible, just slightly bluish

31 Plain or even ugly girls can become movie star pretty simply by removing their glasses and rearranging their hair

32 Rather than wasting bullets, megalomaniacs prefer to kill their enemies with complicated devices incorporating fuses, pulleys, deadly gases, lasers and man-eating sharks

33 All beds have special L-shaped sheets that reach to armpit level on a woman but only up to the waist of the man lying beside her

34 Anyone can land a 747 as long as there is someone in the control tower to talk you down

35 During all police investigations it will be necessary to visit a strip club at least once

36 You can always find a chainsaw when you need one

37 Most musical instruments (especially wind instruments and

accions) can be played without moving your fingers

38 In Middle America, all gas station attendants have red handkerchiefs hanging out of their back pockets

39 All teen house parties have one of every stereotypical subculture present (even people who aren't liked and would never get invited to parties)

40 Trucks use their horns at random (no hang on, that happens in real life too!)

### Answers To last Months Quiz

1) How long did the Hundred Years War last? 116 Years

2) Which country makes Panama hats? Ecuador

3) From which animal do we get catgut? Sheep and Horses

4) In which month do Russians celebrate the October Revolution? November

5) What is a camel's hair brush made of? Squirrel fur

6) The Canary Islands in the Pacific are named after what animal?

Dogs

7) What was King George VI's first name? Albert

8) What colour is a purple finch? Crimson

9) Where are Chinese gooseberries from? New Zealand

10) What is the colour of the black box in a commercial airplane? Orange, of course

## Braishfield Parish Council Notes

**T**his report on the Parish Council covers the meetings held on 22<sup>nd</sup> November 2005 and 3<sup>rd</sup> January 2006. The usual December meeting was deferred until 3<sup>rd</sup> January and the January meeting has been removed from the schedule. Owing to the Committee Room in the Village Hall being unavailable on 3<sup>rd</sup> January, the meeting was held in the Church Rooms, somewhere not used by the Council in recent years. The next Parish Council Meeting will be held on 28<sup>th</sup> February.

In the last newsletter, it was mentioned that the Police attend the Recreation Ground on the 3<sup>rd</sup> Wednesday in the month to liaise with villagers. For your information, the time of this has been changed to 11.00am.

Some of the street furniture is becoming an endangered species. Sometime ago, thieves removed the telephone illegally but now BT is trying to remove it or downgrade it legally. BT has refused to confirm that the existing payphone will remain as a cash telephone and the best guess is that it will be changed to a card telephone. Now we find that the post box opposite

the War Memorial has fallen over and not been replaced. The Clerk was asked to find out from Royal Mail what is happening about it.

Although doubtless there has been further progress behind the scenes on the village shop, this has not yet been conveyed to the Council except that discussions on a letter of support to TVBC may take place in about March.

Some concern about development of land to the rear of houses in Newport Lane has been raised with the Council, but TVBC has confirmed that no breach of planning has taken place. Also raised with the Council is a track leading off into the fields adjacent to Hawkes Farm. TVBC has said that it may need planning permission, but only on a technicality to do with Dores Lane being a 'C' road rather than being unclassified.

The Council's request (again) for a footpath up Crook Hill has received the response from HCC that such schemes have to be prioritised and it has been passed to the Transport Policy Section. Long and grass are words which spring to mind.

HCC said they were unaware of the problems with the CANGO bus service which the Council reported to them. However, some cracks are beginning to appear in the service as HCC is apparently saying that the administration/booking costs are too high. Bus times might also be reviewed.

It was mentioned at a Transport Committee Meeting that existing travel tokens had to be used by 30<sup>th</sup> June 2006, after which they would be invalid. In future there will be a card for bus use to/from Romsey and also between Romsey and other local towns. A rail card will also be available. Special arrangements will be made for groups such as the disabled, who would qualify for £40 of tokens which can be used on taxis. Concern was expressed that those people not on bus routes will be effectively excluded from the benefit as they will not have tokens for taxi use.

On the Recreation Ground, consideration is being given to some work on the trees along the Common Hill Road boundary. This may be done later this year. The playground has had another dose of playbark (making 15 cubic metres in total) which should last a few years.

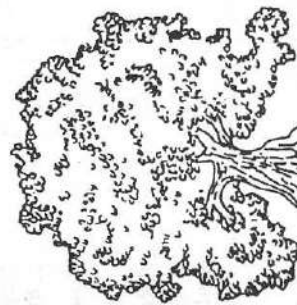
The Council agreed to make a

contribution of £80 towards the cost of putting on the annual Senior Citizens' Lunch and a letter of thanks has been received from Richard Dorlay on behalf of the organising Committee.

The Council has not heard from TVBC concerning the name change of Parnholt Lane to Baileys Down. However, the Council has another request for TVBC to consider. That is one for 'Braishfield' signs at the western and eastern entrances to the village. If agreed, one would go somewhere at Pucknall and the other near the top of Bunny Lane.

John Rhodes

**For information on planning applications in Braishfield and for copies of Parish Council Minutes etc, you can find these on**  
[johnbrhodes.supanet.com/braishfield](mailto:johnbrhodes.supanet.com/braishfield)



The Planning Authority dealt with a number of applications as follows:

	Unit 10, Pucknall Farm, Dores Lane	Change of use to domestic	Withdrawn
05/212	The Manor, Paynes Hay Road	Internal alterations	Permission
05/219	Sunnybank, Church Lane	Side extensions and double garage	Permission
05/220	Sunnybank, Church Lane	Demolition of garage/garden store	Permission
HCC TV024	Recycling Centre, Bunny Lane	Renewal of permission	Permission
TVS 10759	The allotments, Braishfield Road	Revised application for fruit cage etc	Permission
The Council received a number of planning applications and responded to TVBC as follows:			
05/797	Unit 10, Pucknall Farm, Dores Lane	Change of use to domestic (revised application) Tree work	Objection as for earlier application
05/718	Orchard Hill, Braishfield Road		No objection
TVS 10759	The allotments, Braishfield Road	Revised application for fruit cage etc	No further response
05/1123	Willow Trees, Braishfield Road	Tree work	Support
HCC TV066	SITA, Rudd Lane	Variation of conditions relating to Hunts Farm Quarry	No objection but expect no further delays.HCC to manage the activity better in future
05/841	All Saints Church, Church Lane	New doorway and ramped access	Support
05/844	All Saints Church, Church Lane	Tree work	No objection
05/853	Orchard Cottage, Church Lane	Retrospective changes to windows and porch	Support
05/919	4, Blackthorn Close	Tree work	Objection
HCC TV 153	BKP, Bunny Lane	Electrical waste storage	Objection due to traffic level

## Braishfield in the Beginning

The following extracts are from the early Parish Council Minutes researched by John Rhodes, the current Clerk to the Council

ability of saving the pond. All agreed that this was worth doing.

9<sup>th</sup> December 1974

Matters arising

The Clerk read a letter from Mr JBS Attlee the Chairman of the Braishfield Association. He requested on behalf of the Association that the noticeboard be re-erected on the School forecourt and that the Association be allowed to share it. The Council approved and asked the Clerk to organise the board. Mr Attlee also suggested that perhaps a question and answer session could be held with the Council after their meeting. The Council considered this and decided to hold the discussion before the meeting.

The Clerk announced that the Post Office were prepared to exhibit the planning application notices after they had been considered by the Council. The Clerk announced that he had asked the Planning Authority to consider making Braishfield a Conservation Area. Mrs Sleeman said a study of possible Conservation Areas including Braishfield was underway in any case.

Recreation Ground

7<sup>th</sup> October 1974

Village Association

The Council discussed the proposed formation of a village association to look after its future. The Council thought that in general the idea was very sound but Mr Cobbold thought that it must be made clear to the Association that the powers of the Parish Council were limited and that they were overruled on matters such as planning and Council houses.

It was decided to ask the Post Office if there was any possibility of exhibiting planning applications notices in the shop. The Chairman read a letter from Mrs (?) regarding planning in the village. The Chairman pointed out that the Council were only asked for their comments and could [not] make any binding decisions. He also pointed out that all planning applications were listed in the Romsey Advertiser. The Clerk said that the only way in which it may be possible for the Council and other (?) to have more say was to have the village made a Conservation Area. The Clerk was instructed to find out if this was possible.

AOB

The Council discussed the possi-



## Braishfield in the Beginning

*Continued*

The Clerk told the meeting that the Council could make a loan to the 250+ Club at any rate of interest. He told the meeting that he thought that a loan should not be made because the Club already had enough loans. He strongly advised the Council to make a further grant and this should be final. They had been badly hit by inflation and if some support was not given he thought it would be some time before the pavilion would be ready for use. After discussion it was proposed by Mr Steiner and seconded by Mr Lowman that a final grant of £500 be given. This was carried.

The Clerk read a letter from the secretary of the Womens Institute saying they would like to donate part of the proceeds of their Christmas bazaar to provide play equipment on the Recreation Ground. Miss Bacon said there was £40 available and that it needed the endorsement of their full meeting. The Council accepted with thanks and the Clerk was instructed to obtain literature.

The Clerk also read a letter from Mrs Shepperd complaining about the number of cars parking on the Recreation Ground during football matches. The Clerk was instructed to write to Mr Leigh

banning all cars. Mr Steiner raised the question of the very high kerb outside the school. Someone recently had spoilt his trousers at a cost of £8 and his wife had also fallen off and was bandaged for 8 weeks. The Clerk was instructed to write to the Divisional Surveyor as a matter of urgency.

The Clerk was asked to write to the Divisional Surveyor to find out if he could help with the cleaning out of the pond. It was thought that the Braishfield Association might be prepared to help.

13<sup>th</sup> January 1975

The Clerk told the meeting that he had received literature regarding the childrens play equipment in the Recreation Ground. This had been circulated to all the Council. The Clerk reported that the Hampshire and IOW PFA had recommended two swings and a seesaw. The Council decided to get the views of the WI and Mrs Shepperd as well as the HPFA. It is likely to cost around £200 with grant and donation reducing the cost of the Council to around £90.

AOB

The Chairman raised the question of signs in the village. The School sign opposite the Wheat-sheaf had been removed. The

Newport PH sign was crooked. At the School junction one arm was missing and one was misdirected. At the War Memorial, one arm was missing and one was misdirected. The Council resolved to write to Mr Morgan to see if they could all be repaired.

10<sup>th</sup> February 1975

Recreation Ground

The Clerk said he had not heard from the Hampshire and IOW PFA regarding a final decision on the siting of the play equipment. Mrs Shepperd thought that the swings and a seesaw an excellent choice and that it should be in full view to avoid

vandalism. The Clerk told the meeting that the Braishfield Association had asked if anything could be done to prevent the kennels from allowing blood from slaughtered animals running into the high-way ditches. The Clerk was asked to write to the Hursley Hunt.

24<sup>th</sup> March 1975

The Clerk told the Council that the planners were not prepared to let the Council have copies of plans submitted to them. The Chief Planning Officer suggested that the Council could obtain them direct from the applicant.

Information on current Planning Applications in Braishfield and copies of current Parish Council Minutes etc, are available on the website:-

**[johnbrhodes.supanet.com/braishfield](http://johnbrhodes.supanet.com/braishfield)**

A Draft copy of the Parish Council minutes will be placed on the Notice board inside the Village Hall. Parish Council agenda will be placed on the outside notice boards at the Village Hall and on the corner of Common Hill Road and Braishfield Road



## Estate Agents

36 The Hundred, Romsey, Hampshire, SO51 8BX  
Telephone: 01794 514455 Facsimile: 01794 518108  
Email: sales@michaelrhodes.co.uk  
www.michaelrhodes.co.uk

Selling Property in Braishfield and  
other Test Valley Villages

Tel:- 01794 514455 Fax:- 01794 518108

Website:- [www.michaelrhodes.co.uk](http://www.michaelrhodes.co.uk)  
E-mail:- [sales@michaelrhodes.co.uk](mailto:sales@michaelrhodes.co.uk)

View our Property List on line

## [www.AbbeyParkCars.co.uk](http://www.AbbeyParkCars.co.uk) Ben Holdaway

Genuine vehicles reasonably priced  
View website for latest stock



Unit C8  
The Premier Centre  
Premier Way  
Romsey SO51 9DG  
Tel:- 01794 830373

## MARK. A. HUMPHERSON CABINET MAKER

*Design—Manufacture—Installation*

*Specialising in Kitchens, Bedrooms, Bathrooms  
Handmade furniture of the finest quality  
for fitted interiors.*

*Workshop at Hawkes Farm, Dores Lane*

Tel:- 023 8044 6846 Mobile:- 07970 185778

A little bird told me you  
get a gym all to yourself at

## WELLOW Fitness Centre

*Quality Health and Fitness!*

‘And’ he said ‘they do T’ai Chi and Yoga, Circuit  
Training, Personal Training, Nutritional  
Consultations and have a range of therapists to  
sort out your aches & pains.’

*Now that’s something to crow about!*

**Tel: 01794 323322**

*or visit [www.wellowfitness.com](http://www.wellowfitness.com)*

