

Braishfield Village Diary

August

17th	Wednesday	1.15 – 1.45	Mobile Library – Village Hall Car Park
------	-----------	-------------	--

September

5th	Monday	7.00	Five Alive Ladies Group – Church Room
6th	Tuesday	7.00	Braishfield Parish Council
12th	Monday	12.00	Lunch Club in Church Room – All welcome
13th	Tuesday	7.30	Braishfield Horticultural Society Bryan Madders – Dahlias for Pleasure
14th	Wednesday	1.15 – 1.45	Mobile Library – Village Hall Car Park
22nd	Thursday	7.30	Braishfield Flower Arrangement Society Liz Turner

October

3rd	Monday	7.00	Five Alive Ladies Group – Church Room
4th	Tuesday	7.00	Braishfield Parish Council
10th	Monday	12.00	Lunch Club in Church Room – All welcome
11th	Tuesday	7.30	Braishfield Horticultural Society – Autumn Show Mike Read – Wildlife of a Working Forest
12th	Wednesday	1.15 – 1.45	Mobile Library – Village Hall Car Park
27th	Thursday	7.30	Braishfield Flower Arrangement Society Anne Clark – Style Icon

Weekly

Wednesday	10.00 – 12.00	Braishfield Toddler Group, Tel: 367710
Thursday	10.00 – 12.00	Braishfield Art Group

All functions take place in the Village Hall unless otherwise stated
Please refer to Braishfield.org or your Residents Guide for contact telephone numbers
Please send details to the BVA News Editor or Web Editor if you would like dates of forthcoming events to be published



BRAISHFIELD Village Association NEWS

Issue 188 August 2011



The group of Farley Charity Walkers taking a tea break during this year's walk from Boston, Lincolnshire to York
See page 36

Distributed free of charge by the Braishfield Village Association to the residents of Braishfield and the surrounding hamlets

Braishfield Village Association

Committee 2011-2012

Chairman	- David Robinson	368774
Vice Chairman	- Graham Bennett	368109
Secretary	- Rosie Groves	368178
Treasurer	- Sheila Still	368384
BVA News Editor	- Mike Mullane	368099
News Distributor	- Anne Edwards	368193
Website	- Chris Balchin	368427
House Archivist	- Rosalie Gurr	368315
Committee	- David Protheroe	367003

Editor's Notes

This magazine is produced by the Braishfield Village Association and the Editor reserves the right to elaborate, withhold or abridge material as space permits. The views expressed in this Magazine are not necessarily those of the Editor or of the Braishfield Village Association. Any form of reproducing or copying of this publication requires the prior written permission of the Editor. © Braishfield Village Association 2006

Written items for the 'News' should be sent to:-

The BVA Editor
Mike Mullane
Hazel Cottage, Braishfield Road
Braishfield
Hants SO51 0PR by the date shown below.
Copy may be written, typed or on PC media but, ideally, by e-mail to mike@braishfield.org

All items for publication must show the name, address and telephone number of the originator. Letters to the Editor should be on topics relevant to the villagers of Braishfield. The BVA attempts to deliver a copy of the Braishfield Residents Guide and the Village Design Statement to all new residents. If you have not received these publications please contact the News Distributor, Anne Edwards on 368193.

BVA Website: www.braishfield.org

Latest Copy date for the next issue is
19th September 2011

From the Chairman

Bus subsidies will be cut in the coming months - (Romsey Advertiser, Friday July 8th).

The article reports that 'non commercially viable journeys in the countryside', which currently receive special central Government grants, are likely to be particularly vulnerable.

This could be very bad news for some of our villagers, who rely on the already very limited bus services to get to and from Romsey. So, what to do?

It's easy to say that we should all use the bus more but we know that in practice this won't happen; we can campaign, once we know what the County Council intend to do (assume the worst, but the reality might not be that bad); without doubt the Parish Council will take it up and the BVA will chip in our objections too, and this might work.

If not, we'll have to work out an alternative for the regular bus users, perhaps a roster of villagers with cars to organise an informal taxi service; doubtless issues here over insurance and the dreaded 'health and safety' but I'm sure these can be overcome. In short, we fight - if we lose, we find another way!

The Newport Cricket Club deserves our attention right now, given the awful news about the destruction of their pavilion and all the memorabilia and equipment in the fire.

Several people have already rallied round with offers of help and cash, but they'll face a challenge in raising enough to build themselves a new pavilion; with the Football Club fund raising for their new pavilion as well, we are now a village in need of two! I hope some of you have deep pockets and generous hearts. I'm sure we'll do our best to help them achieve their targets. Helping one another is, after all, part of what living in a community like ours is all about. 'The Big Society' may presume to rule but we'll just get on with it!

Linking to my final point. A small band of people regularly walk through the village picking up litter. Although I'm one of them, I recognise that I don't do it as often as I should, and I want to thank the more industrious regulars for what they do. On my stretches the rubbish is mainly discarded food and drink packaging, probably casually and rudely thrown out of vehicles on the move. Founded by the late Tom Gould, who singlehandedly did the job for many years until his health declined, the litter pickers he recruited, will maintain our vigilance; "Gould's Militia" perhaps, in his honour! And the Militia welcomes new recruits, by the way. Give me a call if you're interested.

From the Editor

As I remember saying in the last issue, Summer sets fire to the pen. I was not over optimistic! 44 pages this time and even that was after a bit of micro pruning (not too much, I hasten to add). I'm sure you agree that a newsy, reasonably jocular and informative magazine is good for us all so, once again, many thanks to all of you who have contributed; please keep it coming into the Autumn and beyond.

A few things in no particular order or rank. Not mentioned in this issue, but you will recall the piece by Christoph Gotting, our very own violin maker, in Issue 186. You may have seen and read, but he featured recently in a BBC's South Today programme, and was also written up in the Romsey Advertiser. Excellent—and we got there first! The Chairman mentions the bad

news of the NICC Cricket Pavilion destruction by fire and exhorts us all to do what we can to help restore it—as we will, (not forgetting the Football Pavilion). James Light the NICC Captain writes inside on the plans to recover the loss. 'Twinning' (Crouay) comes up in the magazine, encouraging a softly-softly approach to re-invigorating this, which I wholeheartedly support, and would welcome feedback. A light-hearted exchange over the mysterious disappearing Bunting keeps our poetic and legal antennae waving and frankly leaves me none the wiser! And, yes—the next Barn Dance looms in June 2012, thanks to Her Majesty. Not any old Barn Dance either -this one comes with bells and whistles! Finally, thank you all again and have a very happy Summer break!

Update on the Appointment of the new Rector

Interviews took place on the afternoon of Thursday 7th July, following a separate guided tour of the five parishes of the benefice for each candidate. There were two candidates, and members of all the five benefice PCCs had an opportunity to meet them both socially at a 'Bring and Share' supper the previous evening. The formal interview panel was made up of the Rt Revd Jonathan Frost, Bishop of Southampton, the Rural Dean, Revd Ron Corne, and a representative from each PCC. We hope that at the end of the proceedings the post was offered to one of the candidates and that they have accepted, but no announcement will be made until various formalities, including statutory CRB checks, have been carried out. The Bishop of Southampton's Office will then issue the public announcement. **Maybe by the time the news is published we will have heard the name of our new Rector.**

Sarah Boothman

Your Letters

Stolen Lead

Dear All,

We were sorry to hear that last weekend thieves stole lead from Broughton church. We understand that they may be 'doing the rounds' and although we have painted the lead with Smartwater we need to be vigilant to avoid the lead being taken from All Saints.

I am writing to ask that if you notice anything suspicious if you're passing the church, please call the Police and phone me on 01794 368109 or 07823 320910. If I'm not around please call Andy Brooks on 01794 523928 or Sarah Boothman on 368335.

With kind regards,

Jane Bennett
Churchwarden

PS. Since writing this letter, lead HAS been stolen from the Church Room roof; the Police have been notified.

Crookhill thanks

Dear Fellow Villagers

Thank you to all my fellow neighbours for your generosity on behalf of Marie Curie Cancer Care. Thanks to your friendly response I collected £97.00 door to door for this important charity.

Jude Palmer

F4 Walkers thanks

To all regular users of F4 walk passing Hazel Cottage- Thank you for your patience, friendly faces and encouraging comments over the past 5 months as you were forced to negotiate your way around the ever present skip, various vans and bits of machinery. We are very grateful for your forbearance ; we hope you agree that Ben Kington has done a great job. Thank you.

Sue Mullane

Your letters cont.

How has your week been?
Did you actually do the things you wanted to do or did you find that it was more difficult than you could manage?

As people age they can find that keeping up with life becomes much more of an effort. They avoid doing the things that they have always enjoyed or stop looking forward to new opportunities and challenges. If this sounds like you, then your local Community Innovations Team can help put you back on the right track.

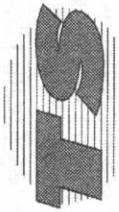
Hampshire Community Innovations Teams are part of a County wide service unique to Hampshire County Council. The teams combine the skills of social care, health and voluntary sector professionals, working in partnership to promote better health and wellbeing for older people. This service is specifically aimed at people aged 55+ who are at risk of losing their independence but do not yet meet the criteria for support from Hampshire County Council's Adult Services Department.

The Romsey Community Innovations Team has a Social Worker, Occupational Therapist, Nurse and Support Worker who will help you review your situation and offer you information, advice and support that can enable you to maintain your independence and get back out into your local community. We work alongside you until you are ready to take control of the things that matter to you.

For more information please contact the Romsey Community Innovations Team on 01794 526299, or email: jane.hawksworth@hants.gov.uk

The Queen's Jubilee celebrations.

Next year we celebrate Her Majesty's 60th year on the throne. The public holiday is from June 2nd to 5th (the 'official' anniversary of the coronation). The Parish Council appointed a group of volunteers to organise events for this remarkable occasion. They are: Mike and Hazel Prince, Carole and Steve Renvoize, Jill Briggs, David Robinson, Mike Mullane. The first meeting produced the following ideas: earmark **Monday 4th June** for our day: starting early pm, informal 'drift in/out' party on the Recreation Ground, similar to the Millennium: large marquee, flat-bed trailer with side curtains as a stage; picnics, private barbecues (watch the pitch!); various 'acts' on stage, evening barn dance in the marquee, refreshment tents around, and a hog roast, finishing around 11.00 pm. Essentials are already booked: barn dance 'caller', hog roast and marquee. Happily, Gareth Dayus Jones (Variety Show and the Windsor Festival!) will be 'musical director'. Early days, much to grow, but please get involved and throw in your thoughts—School, Clubs, Societies "let's be having you"! More to follow in the next magazine.



PLUMBING & HEATING SERVICES

Los Pinars, Sandy Lane, Belbins, Romsey, Hants SO51 0PD
Tel: (01794) 368091 • Mobile: 07801 661497

Oil Boiler Specialists

Installation, Servicing and Repairs.
OFTEC Registered. Oil Tank Replacement.

All Plumbing And Heating, From A Tap Washer, To Full Central Heating.

Power-Flushing Solar Heating
Underfloor Heating Full Bathroom Installation
Over 25 Years Experience

Remember the BVA Website www.braishfield.org

Rubbish News

Recyclable materials in cardboard boxes left beside the brown bin on recycling weeks will be collected throughout the year.

Recycle weeks beginning: 1st, 15th & 29th August
12th & 26th September

Household weeks beginning: 8th & 22nd August
5th & 19th September

Garden waste green bags are collected the same week as household waste, every other Friday morning.

For the Bank Holiday (29th August) brown bins will be collected one day later than your usual collection day.

Mobile Library Service

Last October 2010 Hampshire County Council announced a review of the Mobile Library Service. Over the last 5 years visits to stops have declined by more than 23%. HCC know that the people who still use the service value it very highly, but the current financial situation and decrease in use means they have had to consider how to achieve the most effective service for Hampshire communities whilst making significant savings to the running costs.

The number of mobile library stops will reduce from over 1200 to 365. Fortunately Braishfield will still retain a monthly service on a Wednesday. The vehicle will stop at the Braishfield Village Hall only from 1315 (1.15pm) until 1345(1.45pm) on 20 Jul, 17 Aug, 14 Sep, 12 Oct, 9 Nov, 14 Dec.

As we stated before - Use it or Lose it - the HCC state that the number of customers using each stop will be monitored after 12 months. If there are fewer than 50 people per 2 - 3 hour stop then the stop may be withdrawn. If I have the mathematics right that would mean Braishfield would need to have 8 -10 people visit during its half hour. (now see page 10)

Gas Supply

We believe that many of you may have failed to notice the Gas Supply questionnaire insert in the June 2011 BVA News and have 'lost' the form. Also some villagers may not support the idea of a Gas Supply to the village. We have therefore included the form opposite. (It can also be downloaded from the Braishfield web-site).

Please respond by either:

- 1) Affirming your interest by filling in the form on the opposite page. Obviously you are not committed to taking a gas supply to your home if you show an interest now.
- 2) Filling in your name only with "not interested" across the form and, if you are willing to share it, your reason for not supporting the idea.

Please cut out and hand the form to a BVA committee member - listed on the inside cover of the News - they are all over the village. (Note the new Mobile Library details on the back -P10- before cutting out the Gas form!)

Hopefully we will get a survey with 100% response!

Gas Supply to Braishfield

Braishfield
Village Association



Dear Villager,
We are investigating the possibility of a mains gas supply to the Village. British Gas have requested we carry out a survey to find how many households in the village are definitely interested in getting a gas supply to their properties so that they can work out geographical scope and therefore cost. If you are interested please fill in the details below and return the form to a BVA committee member as soon as possible.

Householder Name

Tel no.

Address.....

.....

.....

.....

Post Code.....

Type of property eg detached, bungalow etc

.....

How many bedrooms?

.....

Note: We will request of British Gas that the above information is to be used solely for the evaluation of a gas supply - no other commercial activity and not given/sold to third parties.

New Mobile Library Service rolls out

Hampshire County Council's Mobile Library Service will launch its new and improved streamlined service on Monday, 4 July.

All the new routes are now available online at www.hants.gov.uk/mobile-libraries or by calling 0845 603 5631, so that people can check out where their new stop is going to be.

Practically every community will still receive one Mobile Library visit per community, by one of the four mobile library vehicles. Each vehicle has been completely restocked with brand new books for people to choose from.

In total, the mobile library vehicles will be making 365 stops each month, including a new Saturday service and will be stopping for longer periods of time in busier locations.

Hampshire County Council along with the Town and Parish Councils will be working hard to publicise the stops in their towns and villages so they get well used. In 12 months time a review will be held to make sure each stop is worth while running.

If people wish to use a mobile library but are unable to get to the new stop then a friend, family member or neighbour willing to visit the library or mobile library on their behalf can be registered as a Good Neighbour and borrow books for them. If the person concerned is frail or has mobility problems then arrangements can be made for books to be delivered directly to their home. For more information on these services you can ask library staff, ring 0845 603 5631 or go to www.hants.gov.uk/library and search A-Z of services for Home Library Service.

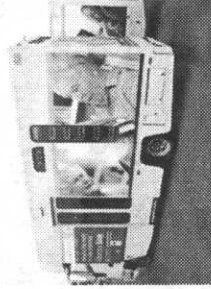
Hampshire County Council's Executive Member for Culture and Recreation, Councillor Keith Chapman said:

"The new service is a result of two extensive public consultations and will save more than £500,000 a year. But the reshuffle was not only about saving money, it was about making the service fit for the twenty first century as it had not been reviewed in over 20 years. We hope that the new stops will be used more frequently and we are working closely with parish and town councils to make sure this happens"

DVDs and CDs will no longer be available on the buses, as these were barely used, making way for even more books.

Hampshire's Mobile Library Service was one of the biggest in the country, with 19 vehicles making over 1200 stops, mostly on a fortnightly schedule. It cost £960,000 to run per year (plus the costs of the stock) and, over the last five years, visits had decreased by 23% and book issues by 39%.

www.hants.gov.uk/mediacentre for media inquiries. Please contact Julie Sloan Press Officer Tel: 01962 846006 Email: julie.sloan@hants.gov.uk



Down to Earth Garden Machinery Romsey



LESTER SMITH Your Local Specialist

with over 40 years experience

- Servicing & Mobile Repairs
- New and used Machine sales
- Spare Parts
- Oils & Batteries
- Hand Tools Sharpened

Contact Les on:
01794 367047

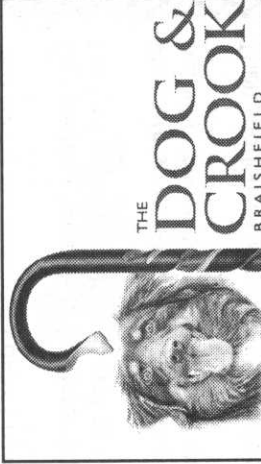
Or fax on:
01794 830553

E-mail: down2.earth@virgin.net

Payment may now be made by card

The Dog & Crook At Braishfield

Crook Hill. Romsey 01794 368530
www.dogandcrook.com



Traditional Home Cooked Food Served Daily
Lunchtime & Evening Specials—Monday to Friday
12-2pm 2 Courses £7-50— 3 Courses £9-50
5-30—9pm 2 course set menu £9-95

Selection of Real Ales
Families Welcome

Evening Meals Served Monday to Saturday 5.30 - 9pm

AN ODE TO THE BUNTING

From deepest Dorset we heard the shout
"Hurry home soon and get the bunting out"

We looked at each other and not a word was said
Could it really still be in our garage or shed?

We sat on the beach and pondered and thought
And decided it was definitely not where it ought

Who had it last?we couldn't remember
Memory dawns - All Saints last September

Kate & Will's wedding was a few days away
Would it still happen with our bunting astray?

We set off for home without further ado
Where was the bunting - we hadn't a clue

Phone calls came thick and fast
"No surely not me" I didn't have it last"

On reaching home with no time to unpack
We had a garage and shed still to ransack

We were so relieved that it wasn't with us
But who inadvertently caused all the fuss

Then suddenly the news went flying around
Yippee, yippee, the bunting's been found

Resting in a garage in Newport Lane
Still in its box in which it came

It's now back in our roof from its journey away
Awaiting a call for its next stunning display

So finally this saga has such a happy end
But it nearly drove us all round the bend

HAZEL PRINCE (turn to pages 14 & 15!)

Mop Till We Drop

Cleaning Services

For a reliable, trustworthy and honest cleaning service.

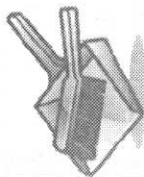
Specialising in private homes and small businesses.

Quotes are also available for a one off cleaning blitz.

All quotes are on an hourly basis
For professional and affordable cleaning in your area

Contact Mark on
07757674456

References are available from many of our satisfied customers in your area.



NORMAN COURT
PREPARATORY SCHOOL

Co-educational Day and Boarding School for children aged 3 to 13

"An outstanding ethos for learning"

Source : ISI Inspection report

Daily minibuss from Romsey available

West Tytherley, Salisbury, SP5 1NH
Tel: 01980 862345

www.normancourt.co.uk

BVA NEWS EXCLUSIVE!

BVA Chairman appears in Court

Readers will recall statements contained in the Chairman's letter of the last edition (187) of the BVA News, relating to the missing village bunting, when he made reference to ugly rumours circulating in the village and while he feared he might be served with a Super Injunction he did nevertheless reveal the bunting had been tracked down to a certain garage not far from the Newport Inn.

Shortly after the Chairman received the following notification

THE HIGH COURT OF THE NEWPORT INN IN THE VILLAGE OF BRAISHFIELD

This Court hereby gives Mr David Robinson (Chairman of the BVA) notice that an application has been received requesting the Court issue an Order authorising the applicant be granted a Super Injunction requiring the defendant, and all others, to remain silent at all times in the matter of the mislaid village bunting which the anon applicant alleges was planted on him in order to cause undue harassment of his family, ridicule of his person and family and damage to his pride. In the event the Court refuses to make such Order alternatively the applicant seeks suitable compensation for the defamation of his character and loss of pride following the publication by the defendant of an open letter in the BVA News.

The case has been set down as

ANON v D B ROBINSON
2011
(Case no. 11.001)

The Applicant's case is stated as follows:

*When I get involved in scandal
I go to Paris Smith & Randall
A top QC they will engage
To prosecute this great outrage
A super injunction costs a lot*

But in the circumstances I think, so what.

*If Ryan Giggs and Fred the Shred
Take girls to bed they have not wed
To those who like to sing and dance
(For myself I only prance)*

*The village bunting counts a lot
But as it is you who hatched this plot
And you allege I am the hoarder
I make the application for this formal Order
And so I must protect my name
By putting an end to this stupid game.*

The Court orders you to defend this case in front of your peers on Friday next 3rd June 2011 at 18.00 hours in the Court of the Newport Inn and for notification of the case and judgement to be published in The London Gazette and BVA News

The Decision of The Court of The Newport Inn

At the Hearing the respondent was represented by Mr Grabbitt of Messrs Sue, Grabbitt and Runne in respect of which Counsel for the Applicant lodged an objection to the effect that Mr Grabbitt had been struck off the Law Society Register of practicing solicitors many years ago and, indeed, as long ago as he was a student.

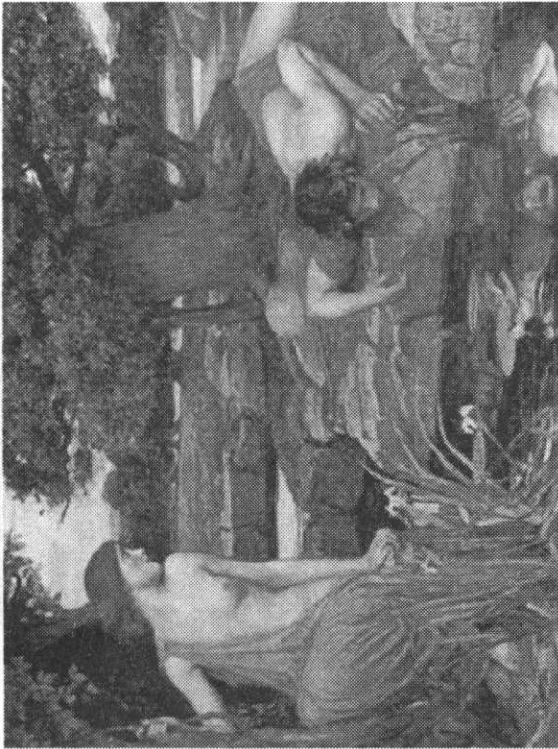
The objection was overruled when Mr Grabbitt stated he was in fact the twin brother of the Mr Grabbitt who had been struck off and in any event who was now long since deceased..

After much argument and debate the Court determined that as the Applicant's name had, as good as, already been revealed in the Respondents published letter the award of a Super Injunction would be inappropriate. The Court did determine there had been damage to the Applicants pride and to repair such damage the Respondent BVA Chairmen should provide the Applicant with a pint of Janet's London Pride.

The court also determined that the Applicant could only be identified by the initials MKEHTN.

The Court made no Order in respect of costs.

The Classical Myths



Dramatic readings by Chris Amery

From the Roman poet Ovid's *Metamorphoses* - mainly in Ted Hugh's translation

An epic account of the Greek and Roman myths - at once violent and subtle, erotic and elegant, tender and terrifying, with ongoing relevance to us today.

Thursday August 18th at 7.30pm

St John's Church, Farley Chamberlayne

In aid of the Jumbulance Trust

Tickets £8 from Chris Chisholm 01794 368250

Answerphone 01794 368120 or Email cookchris@aol.com

(includes a glass of wine and canapés in the interval)

Jumbulance Trust

A small Charitable Trust with 4 unique and specialised vehicles called JUMBULANCES (part coach, part ambulance). They are designed to transport people (known by us as VIPs) who are sick or disabled over long distances in comfort and safety, helped by volunteer nurses, carers and where needed a doctor. We aim to make travel possible and transform lives through this.

Two vehicles are for European travel with 8 trolley beds, 16 reclining seats, platform lift, a toilet suitable for the disabled traveller, full kitchen facility, appropriate medical equipment, 'spenco' mattresses, a hoist and commode, and room for 2 drivers. Up to 12 wheelchairs and other equipment can be stored underneath the vehicle with the luggage.

In March 2009 we launched a longer, more flexible vehicle, with 18 seats and 5 trolley beds or up to 7 wheelchairs that can be clamped to the floor. The fourth vehicle is designed for day outings and holidays in the UK and has a platform lift, disabled persons' toilet, fridge and hot and cold drinks facility. It has 18 seats and a versatile area where trolley beds or up to 7 wheelchairs can be clamped to the floor.

Relatives can accompany the VIPs, or can take a break whilst the VIPs get a real holiday themselves instead of a week in a Hospital or Nursing Home; an important aspect of what we offer. Our VIPs come

from Hospices or are disabled and living on their own; they would never travel without this support. Some have never had a holiday abroad before, stayed in a hotel, been in the sea.....things we take for granted..

Local self funded groups across UK hire the vehicles and provide the able bodied helpers to support the VIPs. . Hotels are vetted before a holiday and the Trust advises groups of suitable, fully adapted hotels. The group nurse sees all prospective VIPs prior to a holiday to ensure that there is the right mix of equipment and helpers. We are self funded and volunteers pay their own fares although financial support can come from fund raising and grants. We subsidise nurses and actively encourage young people 16+ to come as helpers and pay most of their costs. VIPs can also get help with the costs from a variety of sources.

We plan a holiday to Norfolk in August having already travelled to Holland , Llandudno and Brittany. We also offer day outings to Hospices, Crossroads and Disabled Peoples' Groups. For information on my background, on becoming a volunteer or forming a new group please contact me:

Christine Chisholm
01794 368250 or 368120 for messages.

Email: cookchris@aol.com

www.jumbulance.org.uk

Hampshire and the Islands Historic Churches Trust
30th Anniversary of

RIDE+STRIDES

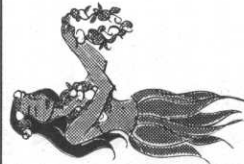
Hampshire and the Islands Historic Churches Trust is committed to helping save our heritage churches and chapels by providing grants to keep the fabric of the buildings in good order.

The Trust's main fund-raising event is **RIDE & STRIDE** held on the 2nd Saturday in September each year, throughout England - each County Trust participates. In 2010 participants raised over £47,000 on the day. This year it falls on **SATURDAY 10 SEPTEMBER between 10 am and 6 pm.**

Participation: The event is a wonderful opportunity for families and friends to bike, walk, horse ride or even drive and discover the rich heritage of our historic church buildings while passing through some stunning countryside in the process. Please visit our website: www.hihct.org.uk to get a list of participating churches and find out more about the event. You can make an online donation via 'Just Giving'. Refreshments are on offer at some churches.

50% of the money you raise is given to your nominated church and the other half comes to the Trust. At the time of going to press, All Saints' Church, Braishfield will be welcoming participants from Braishfield and further afield. **Jill Fahy is the Braishfield representative.**

Registered Charity No 299633
www.hihct.org.uk



UNITED REFORMED CHURCH

Invite you to an
Afternoon Tea with Hawaiian Theme

At

Margery and Bill's
Paddock View Newport Lane

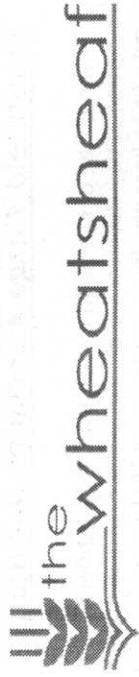
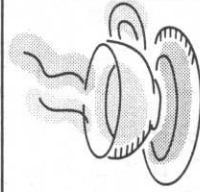
On **Saturday 3rd September 2-4.30pm**

Bric-a-brac - Tombola - Raffle

In aid of our 2011 Charity

Dhrobotara Shobbor Bidaloi A school in India

£3 Adults Children Free
All welcome!!



Come and join our friendly staff at The Wheatsheaf

Open from 9am every day
Breakfast, Lunch and Dinner

Taste our thirst quenching Real Ales
Enjoy our delicious homemade meals made from local produce

Out all day? Why not have your Royal Mail/Courier parcels
delivered to The Wheatsheaf, or picked up from us. We are here to help.

**COME SEE WHY WE RECEIVED A CERTIFICATE OF EXCELLENCE
FROM TRIP ADVISOR**

Braishfield Rd, Braishfield, Romsey, SO51 0QE
01794 367737

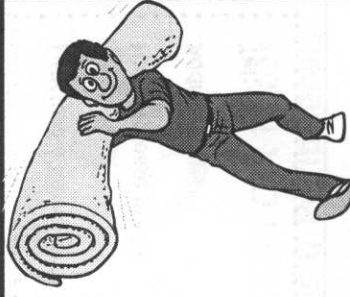
info@wheatsheaf-romsey.co.uk
www.wheatsheaf-romsey.co.uk

GOOD FOOD - SUNDAY LUNCH - HOMEMADE MEALS - REAL ALES -
FRIENDLY WELCOME

Graham Parrick Carpet Fitting

All types of carpet supplied
and fitted. Free Quotations

Tel:- 01794 323173
07831 858615



Braishfield Village Association Donations

The News is delivered free of charge to all residents of Braishfield and it is not run on a subscription basis. However we obviously incur costs to publish and any support you can give to keep the News viable during 2011 would be most welcome.

If you wish to make a donation please complete this slip and forward it to the address below:-

BVA Treasurer
Mrs Sheila Still
Orchard View
Braishfield
SO51 0QB

Tel: 01794 368384
email: - bva@f2s.com

Thank you.
David Robinson - Chairman

As an alternative a Standing Order form to make annual donations to the work of the Braishfield Village Association is available. Please contact the Treasurer and she will send you one.

.....

I enclose a donation of £ towards the running costs of the BVA.

Name (please print)

Address

Tel:-

The Braishfield 200 Club

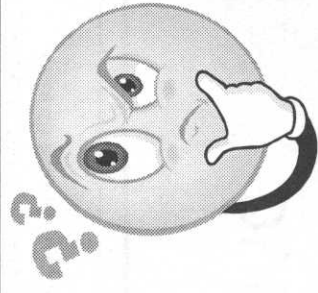
The June draw was won by Mr Tony Chant, formerly of this parish. The July draw was won by Mrs Penny Valling. Both have been notified in writing and received their cheques. The balance for both months (60% of the total raised) was donated to the Newport Inn Cricket Club to help them through their present difficulties. We're always keen to welcome new members who are prepared to donate £5 per month (or more!) to be shared out as prizes and charitable donations. Contact David Robinson for details.

GARRETT CONSTRUCTION

Braishfield's Builder

All manner of building work undertaken
In need of a quote? Please ring Mark or Steve
on 01794 368280

E-mail: marksvegarrett@hotmail.co.uk
See work we've done in the Village



- Computer Problems ?
- Software Problems ?
- Printer Problems ?
- Network Problems ?
- Wireless Problems ?
- Copier Problems ?
- POWER Problems?

Very Low Cost "drop in" or Local Call Out Rates
Wide Range of Computers, Laptops & Peripherals
Free Advice
Quick Effective Service

MiKopy Ltd
01794 511114
www.mikopy.com

July Village Lunch - 90th Birthday celebration

There was a large attendance at the July Village Lunch, which fell on the day of the 90th Birthday of Miss Mollie Russell, Monday 11th July as seen below. After the soup had been enjoyed, the Revd Terry Hinks gave

Mollie a beautiful arrangement of summer flowers on behalf of her friends in both churches and the village and everyone at the Lunch, and expressed congratulations and good wishes. Mollie was also given a card signed by those present at the

Lunch. A special birthday cake, made by Mrs Marian Randall, was brought in, candles lighted, and everyone sang "Happy Birthday". Puddings, as well as cake, were then enjoyed by all. Mollie, who has lived for nearly all her life in Farley and Braishfield, was delighted by the occasion: not the quiet lunch she had imagined!



There will be no Village Lunch in

August: the next will be on Monday 12th September, 12 noon at the Church Room: £2 for excellent home made soup and puddings!

DURBAN HOUSE

Nursing Home

We provide care for the elderly in a friendly homely atmosphere with 24 hour Nursing Care

Please ring Matron on

01794 512332

Email: durban@jsai.co.uk

www.durbanhouse.co.uk

Durban House Woodley Lane ROMSEY SO51 7JL

Shentons Solicitors & Mediators

Family & Mediation
Conveyancing
Wills & Probate
Accidents or Injury Problems
Employment issues
Criminal Law

For all your local legal needs

Please telephone for an appointment

01962 844544

Star Lane House, Staple Gardens, Winchester, Hampshire SO23 9AD
mam@shentons.co.uk www.shentons.co.uk

DJEFFERY & COMPANY

CARPENTERS & JOINERS

Institute



of Carpenters
C03092



MEMBER OF THE FEDERATION
OF SMALL BUSINESSES

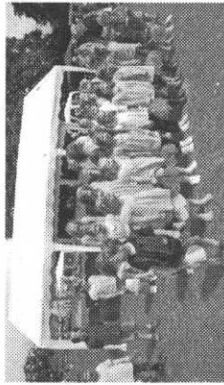
01794 367422

www.djeffery.co.uk

Braishfield School Summer Fayre

Braishfield School's 2011 Summer Fayre was opened by Lawrence McMenemy who arrived in style in Roger Bartlam's Alvis from the Classic Car show.

Despite dodging the showers fayre goers stayed and enjoyed an afternoon of entertainment from the children, live music and a wide variety of stalls and



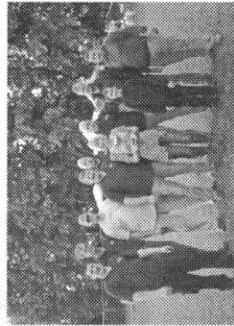
activities, the Zorbing Ball being particularly popular.

The Fun Dog Show was well attended and soggy paws didn't stop local Basset Hound, Marmite, pictured here with owner Tilly and Jim Sykes, from winning the Champion's Prize.



A valiant effort was made by The Wheatsheaf tug of war team, aided by

some of the pupils at the school, but 5 times champions, the Dog and Crook, took a sixth winning trophy with ease as seen here, to add to their collection. Bad weather didn't stop the event making healthy profits of in excess of £4000, a valuable contribution to the funds for the climbing frame project requested by the children of



of the school, but 5 times champions, the Dog and Crook, took a sixth winning trophy with ease as seen here, to add to their collection. Bad weather didn't stop the event making healthy profits of in excess of £4000, a valuable contribution to the funds for the climbing frame project requested by the children of



Braishfield School.

On behalf of Braishfield School Association we would like to thank Mr McMenemy and all the helpers and stall holders who came to support our school event, it was a great success.

It just goes to show that gazebos are extremely useful in sunny and wet conditions.

Crime News

SAFER NEIGHBOURHOODS

There have been a number of criminal instances in the village recently - cricket pavilion burnt down, church room roof lead stolen, newspaper bin papers burnt. All villagers need to be alert and please report any suspicious activity directly to the police by phoning 101.

CRIME PREVENTION

Please remain vigilant now that we are into the summer months. Remember to close and lock all windows and doors before you leave the house. Never leave a key under the mat or on a string through the letter box - it's the first place any burglar will look. Also make sure tools and ladders are kept in a secure place - burglars will happily use your own garden equipment to break into your property. If you are out in the garden or upstairs, make sure your doors downstairs are locked at all times - burglars can often just open the door and help themselves.

FARM WATCH

The membership of the Farm Watch scheme is still growing and the police are actively still seeking new members. If you own a farm or other agricultural/countryside establishment then please contact your Safer Neighbourhoods team by calling 101 or emailing: romsey.snt@hampshire.pnn.police.uk

PHONE SCAM (quoted):

I received a call from a 'representative' of BT, informing me that he was disconnecting me because of an unpaid bill. He demanded payment immediately of £31.00 or it would be £118.00 to re-connect at a later date. The guy wasn't even fazed when I told him I was with Virgin Media, allegedly VM have to pay BT a percentage for line rental! I asked the guy's name - he gave me the very 'English' John Peacock with a very 'African' accent - & phone number - 0800 0800 152. Obviously the fellow realized I didn't believe his story, so offered to demonstrate that he was from BT. I asked how & he told me to hang up & try phoning someone - he would disconnect my phone to prevent this. AND HE DID !! My phone was dead - no engaged tone, nothing - until he phoned me again. Very pleased with himself, he asked if that was enough proof that he was with BT. I asked how the payment was to be made and he said credit card, there and then. I said that I didn't know how he'd done it, but I had absolutely no intention of paying him, I didn't believe his name or that he worked for BT. He hung up. I dialled 1471 - number withheld I phoned his fictitious 0800 number - not recognized., so I phoned the police to let them know. I wasn't the first! It's only just started apparently, but it is escalating. Their advice was to let as many people as possible know of this scam. The fact that the phone goes dead would probably convince some people it's real, so please make all friends & family aware of this.

Affordable Housing Exhibition

Braishfield Village Hall

Wednesday 14th September 2011
between 3.00 pm and 9.00 pm.

You are invited to attend an exhibition of the sites in Braishfield that have been considered for affordable housing.

Following the 2008 Housing Needs Survey which identified a significant number of local people in need of affordable housing in the parish, Braishfield Parish Council has been working with the Rural Housing Enabler and Test Valley Borough Council to find a suitable site for 9 homes. This is likely to be an exceptions site and therefore would only be developed as affordable housing for local people with a proven local connection.

A number of sites put forward have been considered by the planners at Test Valley Borough Council as well as the Rural Housing Enabler and Parish Council - a site on Braishfield Road opposite the school is currently the preferred site. A map and a summary of the comments on all of the sites will be on display, along with pictures of similar developments in other local villages.

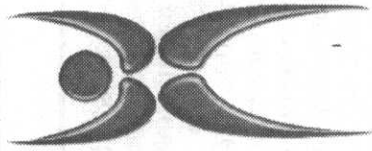
We would welcome your views on the need for Affordable Housing, on the preferred site, on the size and style of housing. Test Valley Borough Council, the Rural Housing Enabler and Hyde Housing Association will be present to answer any questions.

These are currently proposals being discussed by the Parish Council and the other bodies, but we emphasize that no decisions have been made and a project will only proceed following full consultations within the village of which this exhibition is the first.

If you are in housing need and have a strong local connection to the village, but have not yet registered your need with Test Valley Borough Council, you can do so at the exhibition.

We look forward to seeing you there.

Braishfield Parish Council



FAST TRACK TO FITNESS

Michelle Hughes

T: 07787 526619

National Academy Of Sports Medicine

International Personal Trainer

Reps Level 3

E: michelleshawmth@aol.com

PERSONAL TRAINER WHATEVER YOUR GOAL!

Lose Weight / Body Fat
Improve Fitness / Stamina
Nutritional Advice
Self Confidence
Tone your Body
Improve Specific Problem Areas

DISCOUNTED GROUP SESSIONS
& DISCOUNTED BLOCK BOOKINGS
Normal Rate £35.00 per hour

10% DISCOUNT

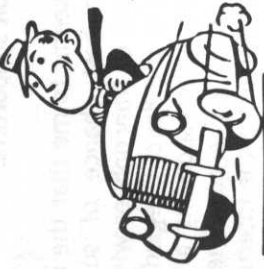
WITH THIS ADVERT

CALL FOR A FREE CONSULTATION

Based in Romsey covering a 10 mile radius

www.AbbeyParkCars.co.uk
Ben Holdaway

Genuine vehicles reasonably priced
View website for latest stock



Unit C8
The Premier Centre
Premier Way
Romsey SO51 9DG
Tel:- 01794 830373
E-mail:- ben.holdaway@btconnect.com

French Twinning

I am responding to the various articles that have appeared recently about twinning. When the parish council arranged for the signs on the roads into the village to be re-erected I felt that it was a bit inconsistent for the twinning association to be in deep hibernation, shall we say. I mentioned this to a few people and received various pieces of (incompatible) information and was told that there was no longer any enthusiasm for twinning.

It appears that it is almost impossible to undo a twinning so we should find a way to live with it. I accept that the old twinning association folded because people no longer supported it but this is an opportunity to think again about what activities could be successful. The old arrangements with mass transmissions one weekend a year were inflexible; it was always the same weekend, some people were always doing other things that particular weekend, and the prospect of spending a whole weekend with strangers with whom one cannot converse easily is not going to recruit supporters.

It seems to me that the model with the best chance of success is a group of francophiles with an interest in the Bayeux region and hopefully a corresponding group of anglophiles in France. One thing that has changed is the internet; it

is now possible for individuals to make contact; a revived twinning Association could put like-minded people in contact. Children love chatting online and this offers a good way to improve their language skills (obviously there would have to be safeguards but surely this is not insuperable).

Braishfield residents could supply local information or maybe real English food or even accommodation, and hopefully this can be reciprocated. Sporting contests are obviously another possibility.

Alternatively maybe we should just join Romsey twinning following Mike Bull's invitation or could we combine with some of the other local villages that have twin villages in Normandy set up at the same time as Braishfield's; I don't know what state of health their twinning associations are in?

If the association can be woken from hibernation it needs some new supporters and a new approach and it needs to be flexible.

As a small contribution I have put together a webpage with some pictures of Crouay:

www.lionhouse.plus.com/crouay.

Geoff Daniell

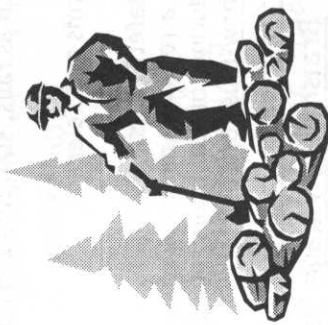
The French Game

The French connection stirs the imagination - many of us have one! We hanker after the opportunity to cross the Channel and enjoy the changes and our different live-styles. Those memories of sipping a drink (pastis?) in a quiet market square in France, under a shady maple, and watching the world go by are too infrequent. And perhaps, whilst there 'watching' we have been caught up in the relaxed fascination of the game of Boule - bowls by any other name, but played with metal balls on unforgiving ground more or less anywhere, and sported in every hamlet and village in France. How about a Boule Club in the Village? Surely not, you say - just think of Waterloo (er- and Trafalgar!- Ed)! But it's an idea! The Social Club, the Recreation ground or perhaps one of the three Pubs in the Village might like to take it up and form a Club?

A weekly gathering in the summer to enjoy friendly company and a drink may be welcome to a number of us and provide community activity and 'up' the sale of beer! Surely, it is worth more than a thought. We might even beat the French - as we did in 1815 (and 1805-Ed!) - at their very own! Now we're talking - any takers?

GE & Editor - (The Navy had to correct the Army here and there!)

Seasoned Hardwood Logs



Locally grown Timber
cut and split to your requirements
Teli:- 01794 368513
For your convenience

As well as Tipped Loads we now also supply Firewood in Net Sacks and Vented Bulk Bags

Safe, Warm, Secure

The Safe Warm and Secure pilot project has been established by the Wellbeing and Partnerships Team in Hampshire County Council, Age Concern Hampshire and the Shaw Trust to help people over 70 to keep safe, warm and secure. The pilot is only available in Eastleigh, New Forest and Test Valley Borough/District Council boundaries, and is available until December 2011. The project is aimed at providing homeowners, who are over 70 years old, with support to help them improve and maintain their house to keep it safe, warm and secure and so enable them to continue to live independently at home with a positive quality of life. The Safe, Warm and Secure Advisors provide free practical and emotional support for the older person, until completion of the work. They are able to take referrals from professionals, voluntary organisations and directly from the public. The project is an advice and guidance service, but can not provide funding. The advisors can help people by:

- Identifying available grants and benefits
- Home repairs
- Loft and cavity wall insulation including loft clearance
- Home security
- Adaptations such as rails, stair lifts and ramps
- Community alarms and Telecare

Arranging free home safety visits
If you want to make a referral, more information or fliers to distribute please contact us during office hours on **02392 733982** or email safe.warm.secure@shaw-trust.org.uk

Braishfield Village Hall

Flexible space available for social and sporting activities, clubs and groups at reasonable rates.

Email katel.knight@googlemail.com
Tel: 01794-368173

Property Maintenance & Handyman Services

Interior & Exterior Painting & Decorating
Wallpapering

Sheds & Fences Erected Painted & Re felt
Grass Cutting, Hedge Cutting & Strimming
Floor & Wall Tiling

Flat Pack Assembly & Small Carpentry Work
Windows & Doors Repaired & Replaced
House & Garden Clearance

Fascia Boards & Gutters Cleaned, Repaired & Replaced
Driveways & Paths Repaired & Resurfaced
Kitchens & Bathrooms Fitted

Ground Works & Drainage
Brick work & Re-pointing work
Collection & Delivery Service

Plus many other areas of maintenance work & odd jobs
carried out

Ben Kington

Telephone : 01794 368536

Mobile : 07866551725

Fully insured References available

Free Estimates

Braishfield Horticultural Society

I recall a comment made by the BVA Chairman in the last edition of the Village Magazine, that April had been a good month for village activities. Indeed it had been. Now, at the time of writing, the month of April will no doubt be remembered as possibly our summer once again. The poor old plants must by now be totally confused, whilst the gardeners struggle with the timing in order to bring their products to fruition in time for the Annual Flower Show. Life gets tedious doesn't it.

Our four garden visits in June and July went ahead as planned and were enjoyed by all who came along. On each occasion the weather was kind despite our doubts at times. The numbers were lower than usual for our first outing to the five acre garden at Pilgrims Croft Farm, West Dean, but we did have an enjoyable and interesting evening. The lady of the house, Sarah Gruselier kept us, not only well informed but also highly amused at times. Now lads, how about having a wife who happily leaps out of bed in the middle of the night to attend to some job overlooked during the day. I wonder if she then warms her cold feet in the middle of hubby's back upon her return. We will never know. The second trip, to the Old Rectory at Houghton saw some thirty mem-

bers turn up to wander around another garden of about four acres. Again there was much to see and admire and we were kept well informed by Mrs Richard Priestly and the Gardener. As with the previous garden, included in the attractions was a large swimming pool, but alas, there were no skinny dippers included in our party. Shame. Later, twenty nine of us huddled together at the Boot Inn for a meal and social get together. Another evening well spent

The first of our outings in July was, of course, to the Hillier Gardens and the conducted tour of the Arboretum with Wolfgang Bopp. On this occasion the weather was fine to begin with but did deteriorate towards the end of the tour but fortunately, not enough to cause any problem. We were suitably dressed and equipped with the customary brollies. Wolfgang led us around a number of completed projects and some, still in progress. One in particular of quite major proportions with the excavation of a footpath down into the valley and the spoil removed being used to construct a Himalayan Venture. Yet more exotic plants will appear in the near future. Altogether we spent an hour and a half enjoying a well conducted tour around the Arboretum before returning to Jerminys House. Whilst we relaxed, sipped the wine and nibbled the nibbles, Wolfgang talked about some of the history of the gardens,

future plans and answered questions before we all went home after another well spent and enjoyable venture.

Our final evening visit for this year was, of course, to Sandie Cottage where we, twenty-nine souls, were made very welcome by Peter and Yo Beach. Another large garden of around five acres but very different to some in that a large proportion of the flowers were in fact, of the annual varieties. Having said that, there was a tremendous mass of colour to be seen, the quality of which was superb. There were, of course, many other plants to admire other than the annuals including an array of Fuchsias such as most of us had never seen before. They were so large and covered with an unbelievable mass of blooms. Apparently the secret is to feed them daily on a weak mixture of Tomorite. Later we adjourned to the Augustus John for a meal and the customary supply of liquid refreshment. It was while we sat rounding off our evening that Yo Beach suddenly appeared and handed to all twenty-one of us pre-

sent, a bunch of the Sweet Peas that we had earlier been admiring in her garden. What a thoughtful and lovely thing to do. It certainly made our day complete.

Tuesday September 13th is when we recommence our monthly meetings with a visit by Bryan Madders who will talk about Dahlias For Pleasure. He will be followed by Mike Read, on Tuesday 11th October, who will entertain us with a talk on Wildlife Of A Working Forest. Do come along.

Finally, by the time that this issue of the BVA Magazine is safely in your hands, the Annual Flower Show will be over. Unfortunately, due to the fact that the Show was later in the month, there was no time in which to produce a report before the scheduled print date for the Magazine. Hopefully, the Romsey Advertiser will publish the usual report that I will ensure is with them in time for their following issue. Keep your fingers, maybe toes as well, tightly crossed.

Bob Thomson
BHS Secretary & Scribe.

STICKLEY PAVING & LANDSCAPES

Family run Business for 35 years

All aspects of Landscaping
from Design to Completion

We manufacture our own
range of Paving Slabs

Free Consultation & Quotation

Tel / Fax : 01794 368694
Mobile : 07770 452631

- * Patios
- * Driveways
- * Turfing
- * Planting Schemes
- * Low Maintenance Gardens
- * Guaranteed Work



Cricket Club Update

The Newport Inn CC suffered a fire at the pavilion, late in the evening on 20 June which destroyed all of our kit, machinery, furniture and memorabilia. This, unfortunately, affected our planned 6-a-side competition on Sunday 26 June which we cancelled. Further to this, it would seem that the authorities are not treating the incident as suspicious.

We have been very lucky to have received some kind donations from various people and other cricket clubs - providing cricket kit, balls and stumps. We have also been donated mowers to help us cut the square. Our tractor and outfield mowers went up in the blaze so cutting the outfield has been a challenge but in the interim we have set up an agreement with the council to do this. We have received financial donations from past and present members as well as one or two local charitable organisations - for which we are very grateful.

Despite all of this we are still playing cricket and hosting games at the ground - with lots of help and commitment from our playing members! Results on the pitch have been mixed but we still enjoy ourselves and love playing at the ground.

Plans are afoot for storage and a new pavilion but this all costs money. We are hoping to organise a sponsored walk in September, taking us from our ashes to The Ashes in the Lords Museum! The plans are still in their infancy but we are serious about it and just require the support of the cricketing powers that be - we will update you nearer the time. In the meantime if anyone can help us out or would like to make a donation please contact our Club Captain, James Light on 07751 683621 or j.light79@yahoo.co.uk or our Treasurer, Ben Brown on 07941 478230 or Brownbj@Hotmail.com

If anyone would like to come along and play or watch we would welcome them along. These are our remaining fixtures for the 2011 season:

AUGUST

7 Sunday HYDE Home 14:30
14 Sunday PRIMARY CLUB Home 13:15
21 Sunday WILLOW Away 14:30
28 Sunday RIOTEERS Home 14:30

SEPTEMBER

4 Sunday COMPTON CHAMBERLAYNE Away 14:00
11 Sunday FREE (THE ASHES WALK - TBC)
18 Sunday NEWPORT GENTS XI Home 13:30



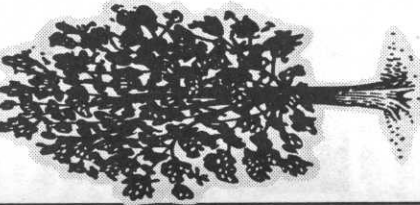
Martyn Dennis

Painter and Decorator



- Fully Qualified
- Interior and Exterior
- Over 20 years experience
- C.I.T.B. Registered
- Wallpapering a Speciality

Tel:- 023 8026 9695 or 01794 501587



BRAISHFIELD TREE SURGEONS

Specialist tree surgery and advice

Tree surveys carried out

Professional service in all areas

25 Years Experience

LOGS . WOODCHIP.

HEDGE CUTTING

Contact Ian Knight on
01794 368794 or 07500 968373

Email katel.knight@googlemail.com

The Farley Walk May/June Boston and beyond

Each year on a Saturday at the end of May a group of bold, determined and sometimes slightly foolhardy people can be seen boarding a bus at Braishfield War Memorial. This is the Farley Walk - a charity walk raising funds for Farley Chamberlayne Church and other charities.

This walk is in its twelfth year, and many people have participated over the years. The walk is organised by Iain Chisholm and an enthusiastic band of helpers. As of custom on the night before the walk there was a Barbecue at Oakfield, the home of Iain and Chris Chisholm. This is organised by members of Farley Church and attended by the walkers and well wishers.

The walk this year started at Boston (Lincolnshire) and finished at York with a splendid dinner (more of that later). The party in two minibuses and a support car set off from Braishfield and collected other members of the group on the way. Our first stop was at Cambridge where we walked around the colleges and visited King's College Chapel. There was much discussion of elitism particularly as there was a large notice declaring only members of the college were allowed to walk on the grass. Many were noted to be flouting this dictum.

We went from Cambridge to Crowland where there is a remarkable medieval bridge. This bridge appears to be going from nowhere to nowhere but in medieval times it was at the confluence of some of The Fens most important waterways. Iain's brother, Professor Michael Chisholm, gave a chat about the drainage of the Fens and the history of the bridge. The party then visited Croy-

the countryside was beautiful and the walking splendid if hard. At the end of the day many were quoting Kipling - "If you can force your heart and nerve and sinew to serve you long after they are gone" hopefully with the prospect of manhood at the end, but their hopes were rudely dashed as our leader exhorted us to walk more quickly because next day was to be a longer day.

On the way home to our hotel in Pickering one of our minibus drivers (unnamed) was stopped by the police for speeding, but the two young officers having surveyed the ages of the occupants of the minibus let the driver off with a caution.

The next day, Wednesday was again a wonderful walk from Ravenscar to Whitby with lunch in the lovely Robin Hood's Bay and ending with a visit to the ruined abbey at Whitby.

Undoubtedly the highlight was the homeward trip from Whitby to Pickering on the North Yorkshire Moors Railway. For those

given to nostalgia, the sights and smells brought back all sorts of childhood memories - particularly how

Whitby to Pickering train ride

steam trains ruined any new clothes especially if white. On Thursday wonderful weather, wonderful walk, more steam trains, this time only to be looked at. There was a dinner in the evening at our hotel in Helmsley followed by a great talk by Timothy Hornsby on the battle of Stamford Bridge (a site we visited two days later). Few of us realised the significance of the battle of Stamford Bridge

to European and indeed world history.

On Friday the weather remained on our side. Wonderful countryside and a fascinating visit to Rievaulx Abbey, the walk finishing at Ampleforth School where we had tea and a conducted tour around their Abbey.

On Saturday the walkers left Helmsley via Stamford Bridge and on to York and then to dinner at the Railway Museum. What a magnificent place! Even the ladies amongst us were overwhelmed. The collection of steam trains and diesels is world renowned and we had a superb dinner on Platform One surrounded by these wonderful trains. Amazingly the museum itself has free entry; could it be because a Yorkshire man is known as a mean kind of Scotsman?!

We returned home the following day after attending a Choral Eucharist in York Minster, all of us footsore but thrilled by our trip.

As always the organisation was terrific and Iain surpassed himself as it fell to his lot to drive the large minibus, and also many thanks to David Pearson who led most of the walk. The small minibus driving was shared by Frank Akerman, Nancy Shepherd, and Liz Emerson. Very special mention for Chris Chisholm who met us at each stop with refreshments, lunch, and particularly cakes made by the walkers and their spouses. The fruit cakes were unbelievable and if fruit cake making ever becomes an Olympic sport, England will win the Gold.

The universal cry was 'where to next year Iain?!'



on the moors



north of Ravenscar



Whitby to Pickering train ride

SOLAR ENERGY

By the Editor: I put this in purely for information and thought. Having a good south facing roof myself, I am interested in the general concept.

UK Feed-in Tariffs (FITs) make solar photovoltaic (PV) panels an attractive investment for homeowners who have savings. The impending Renewable Heat Incentive (RHI) will also provide better returns for solar water heating (SWH). But there are some points to consider before chasing quotes:

1) Which way does my roof face?

A south facing roof is best but panels can deliver very good results facing anywhere between east and west, through south.

2) Do I have the roof space?

A minimum of about 10m² of panels are needed for solar PV and approximately 4m² for SWH (based on a household of 4 people). Sections of roof shaded by trees or buildings are to be avoided.

3) Will I get the most benefit?

Daytime users of electricity and hot water have much to gain by directly replacing costly energy with free solar energy.

4) Can I afford it?

An ideal budget would be in excess of £8,000 for PV and £3,500 for SWH. It's important to remember that in order to be eligible for FITs and RHI your system must be installed by an MCS certificated installing company. To find out more, check out Cocon's new on-line 'Solar Suitability Checker'. This tool allows you to find your roof on a satellite map, check its size and orientation, and see what returns an investment in solar might deliver. No personal details are required. The tool will go live in Summer 2011 at www.coconyourhome.co.uk

Notes:

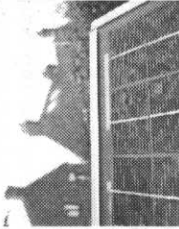
In March 2011, the UK Government announced that the Renewable Heat Incentive (RHI) will be introduced in two phases for domestic customers. From July 2011 the RHI Premium Payment will provide a one-off grant (expected to be worth £300) for households who install a solar water heating system. From October 2012 new RHI tariffs will provide long term support to anybody who has installed an eligible technology since 15 July 2009.

This article was produced by United Sustainable Energy Agency (USEA).

Contact: Gordon Glass, Marketing Co-ordinator

To email USEA staff, please use the firstname.lastname@usea.org.uk.

The information in this article is correct to the best of our knowledge, but is subject to change. USEA cannot in any way be held legally responsible for any advice given or any work carried out as a result of this information.



Yoga

Braishfield, the Church Room

Evening classes: Wednesday at 7pm

Morning classes: Thursday at 9.15am

£25.00 for 4 week block (consecutive weeks)

The classes are designed to work all your muscles and joints, stimulate particular internal organs and release energy from stress prone areas. I tailor my classes to suit all levels of ability.

For additional information please contact:

help@yoga4back.com

Tel: 07909 545311

www.yoga4back.com

GM Property Services Ltd

Quality Property Maintenance & Improvement

For all aspects of building maintenance, home improvements and repairs including;

Tiling, Walls & Floors

Laminated & Hardwood Flooring

General Carpentry & Repairs

Painting & Decorating

Kitchen & Bathroom Fitting

Garden Maintenance including Decking and Turfing

No job too small, competitive rates & FREE Estimates.

A friendly, Reliable & Professional Local Service References Available

Call: 0845 116 2414 (Free from BT Landlines)

Romsey East Rural PACT

Background

The acronym PACT stands for Police and Community working Together. This is a new initiative set up by the local Police and Parish Councils with the aim of encouraging the local community to participate in local policing. It builds on the concept of Neighbourhood Watch groups. The first PACT in this area was set up about a year ago and covered Lockerley, Tytherley and the Deans. The Romsey East Rural PACT was set up last month and covers the parishes of Michelmersh and Timsbury, Braishfield and Ampfield.

Aims

The PACT is a multi-agency, problem solving group that consists of relevant partner agencies, key stakeholders and, most importantly, members of the local community. (Multi-agency groups may include for instance TVBC Environmental Health for problems with noise nuisances or fly-tipping, both areas where the Police have limited powers.)

The PACT is led by the police and parish councils and will focus on the main priorities that are identified after consultation with the local community. Members, who are all volunteers, take on responsibility for achieving certain tasks on behalf of their neighbourhood.

Actions

The three parishes have speeding motorists as a common problem and speed checks will be carried out on a regular basis. The other 2 parishes also have a major problem with travellers, and action is being taken to minimise disruption; thankfully Braishfield has escaped their visits so far. The representatives for Braishfield are Clive John for the Parish Council and Chris Balchin for the BVA.

If you have Police/Community issues to raise please contact us.

Clive John clive246@btinternet.com or call 368074

Chris Balchin chris@balchin99.fsnet.co.uk or call 368427

Braishfield Flower Arrangement Society

Programme

Sept 22nd 'Title to follow', Liz Turner

Oct 27th 'Style Icon', Anne Clark

Nov 24th 'Festive Tints and Glows, Irene Hickson

OPEN EVENING - all welcome

All meetings are held in Braishfield Village Hall at 7.30pm

⁴th Thursday in the Month

Membership is £20 per year. Visitors are very welcome at £4.00 per evening. For more information please call: Betty Horton, Chairman on 01794 368249 Denise Bright, Vice Chairman on 02380 741299

W.W.H. Ewens Insurances Adviser

36 The Hundred, Romsey, Hampshire, SO51 8BX ~ Tel: 01794 515113



David Ewens BA(Hons) APFS CeMAP

INDEPENDENT FINANCIAL ADVISER

INVEST-
MENTS

LIFE
COVER

MORT-
GAGES

PENSIONS

Authorised and regulated by the Financial Services Authority



Estate Agents

36 The Hundred, Romsey, Hampshire, SO51 8BX
Telephone: 01794 514455 Facsimile: 01794 518108
Email: sales@michaelrhodes.co.uk
www.michaelrhodes.co.uk

Selling Property in Braishfield and
other Test Valley Villages

Tel:- 01794 514455 Fax:- 01794 518108

Website:- www.michaelrhodes.co.uk
E-mail:- sales@michaelrhodes.co.uk

View our Property List on line

An event for the whole benefice

Saturday 1st October 2011

Braishfield Village Hall

Benefice Mad Hatters Tea Party, Auction, BBQ
and Barn Dance at Braishfield in Wonderland

2pm Viewing for Auction
and Tea Party

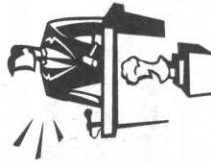
3 30 pm Auction

6 pm BBQ

7-11pm Barn Dance



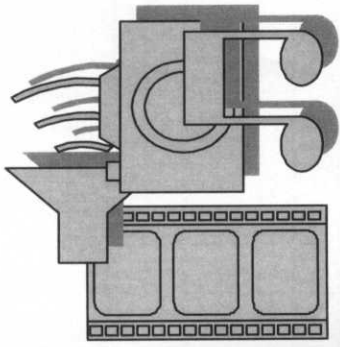
to raise funds to support the five
churches of Awbridge, Braishfield,
Farley Chamberlayne, Michelmersh
and Timsbury



Tickets: BBQ £10
BBQ and Barn Dance £15

We need your support - donations for the auction gratefully
received!

For information on planning applications in
Braishfield and for copies of the Parish Council
Minutes etc, you can find these on
www.braishfield.org.uk



The Village Quiz 2011

Friday 25th November

7-30pm

Braishfield Village Hall

Teams of 4* £3 per head
Entries representing Village Associations,
Activities and Groups encouraged
Bring your own refreshments

*Teams can be formed on the night