

Braishfield Village Diary

August

?	Tuesday	10-11	Police Beat Surgery in Village Hall Car Park – please check web-site diary for actual date
---	---------	-------	--

September

6th	Monday	7.30	Wives Group Plus - Church Room Late Summer Activity!!
7th	Tuesday	7.00	Braishfield Parish Council
13th	Monday	12.00	Lunch Club in Church Room - All welcome
14th	Tuesday	7.30	Braishfield Horticultural Society Tim Woodland - Bulbs for Naturalising
?	Tuesday	10-11	Police Beat Surgery in Village Hall Car Park - please check web-site diary for actual date
23rd	Thursday	7.30	Braishfield Flower Arrangement Society Carol Norman - Second-hand Rose Competition - 'Harvest'

Weekly

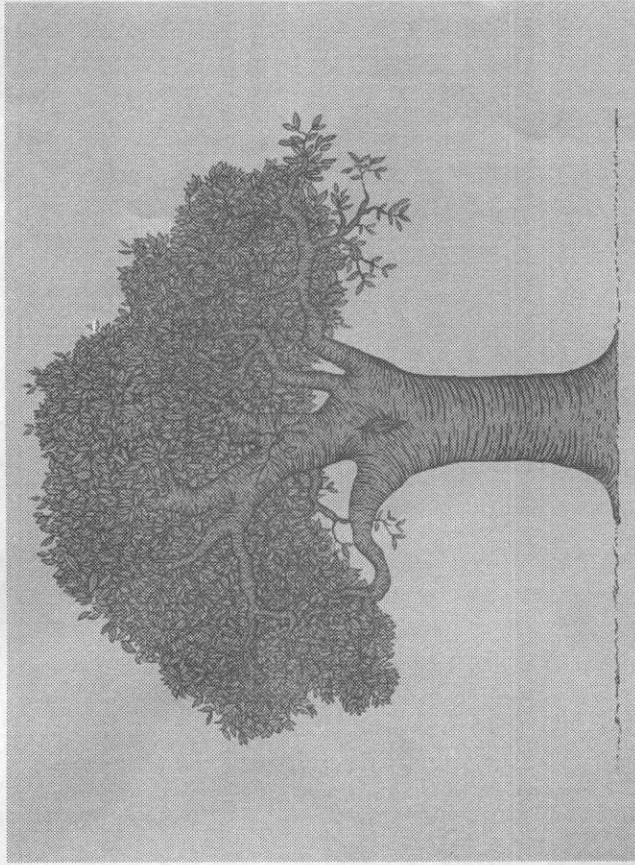
Wednesday	10.00 – 12.00	Braishfield Toddler Group, Tel: 367710
Thursday	10.00 – 12.00	Braishfield Art Group

All functions take place in the Village Hall unless otherwise stated
Please refer to Braishfield.org or your Residents Guide for contact telephone nbers
Please send details to the BVA News Editor or Web Editor if you would like dates of forthcoming events to be published

BRAISHFIELD

Village Association NEWS

Issue 182 August 2010



Summer Holidays

Distributed free of charge by the Braishfield Village Association
to the residents of Braishfield and the surrounding hamlets

Braishfield Village Association

Committee 2010-2011

Chairman	-	David Robinson	368774
Secretary	-	Rosie Groves	368178
Treasurer	-	Sheila Still	368384
BVA News Editor	-	Mike Mullane	368099
News Distributor	-	Anne Edwards	368193
Website	-	Chris Balchin	368427
Committee	-	David Protheroe	367003
		Graham Bennett	368109
		Rosalie Gurr	368315

Editor's Notes

This magazine is produced by the Braishfield Village Association and the Editor reserves the right to elaborate, withhold or abridge material as space permits. The views expressed in this Magazine are not necessarily those of the Editor or of the Braishfield Village Association. Any form of reproducing or copying of this publication requires the prior written permission of the Editor. © Braishfield Village Association 2006

Written items for the 'News' should be sent to:-

The BVA Editor
 Mike Mullane
 Hazel Cottage, Braishfield Road
 Braishfield
 Hants SO51 0PR by the date shown below.
 Copy may be written, typed or on PC media but, ideally, by e-mail to mike@braishfield.org

All items for publication must show the name, address and telephone number of the originator. Letters to the Editor should be on topics relevant to the villagers of Braishfield. The BVA attempts to deliver a copy of the Braishfield Residents Guide and the Village Design Statement to all new residents. If you have not received these publications please contact the News Distributor, Anne Edwards on 368193

**Latest Copy date for the next issue is
 16th September 2010**

From the Chairman

If you have visited the Recreation Ground recently (and if not, why not?) you will have noticed the newly installed 'Trimtrail' nestling discreetly against the far hedge. The chances are it will have been receiving the serious attention of some smallish boys. At the time of writing this it is not complete, as we are waiting for the delivery and installation of some small sign posts telling you what exercise to do on each 'station'. It has been designed for use by adults as well as children though, so if you nurse secret feelings of guilt that you really ought to get a bit fitter, get out there and have a go. It has all been made possible by a bequest from the late Dr Hunt, a resident of the village, and the determination and persistence of our former chairman, George Elliott. We also received a very welcome grant from 'Biffaward', the environmental trust set up by the Biffa group whilst on the subject of the Recreation Ground, wasn't it great to see the school having its annual 'do'? (Multiple choice question: Is it (a) 'fete', (b) 'fair' or (c) 'fayre'?). We enjoyed it, and a few weeks later we also had the Flower show. I particularly liked to see the 'Whack the Rat' game re-installed, with a brand new and very sleek rat, and a new drainpipe. Not that I've anything against rats *per se* you understand, but it's nice to see that fun can still be had without staring at a

small screen with a gismo in your hands. One little girl, I'm told by Tony Chant, the 'ratmaster', failed several times to connect with the rat as it emerged from the drainpipe, so decided to beat seven bells out of it as it lay on the floor! I'm afraid that your chairman's 'Guinness cake' was dismal, rightly dismissed as beneath contempt by judge David Protheroe. It was more than overdone. Burnt to a cinder, although inside bits of it are quite nice to eat - with a cup of tea to help it down. Some kind, anonymous person has left an oven thermometer on our doorstep with a note: 'To Alfred, from a Well Wisher.' (Alfred burned the cakes - gedit?) It will be used to check our oven, be assured. Next year, I'll have to think of another excuse. The village trip to the Dorset Steam Fair on 1st September was fully booked, but one person has had to withdraw, so I have one seat on the coach available. If you're interested, give me a call. The minibus leaves the village at 10.30 am and will get back at around 8.15 pm. It should be a good day out. Given the vagaries of the British climate, we have had a pretty good summer so far this year, although I realise that this is a dangerous statement to make and that by the time you receive this we may be fighting floods. Let's hope though, that our farmers get some kind weather and have a good harvest.

From the Editor

Number 3 in my saga and once again I must thank Sue, my wife, for her indefatigable help in overcoming my computer illiteracy in matters of organising layout, page logic and, I hope, reading fluency. So much so that I think I'll change that to 'our saga'!

I feel we have a much better input of articles this time and it does seem to have redressed the slight imbalance against advertisements –although perhaps it is the fine summer weather which flushes out all the outdoor subjects we naturally aspire to at this time of year.

On that score why not start thinking about the next 2 editions (Autumn and Winter) in terms of articles on activities that grip you then!

As always, thank you for your contributions to the magazine. For those of you who have already holidayed I hope you had fine one, for those who are currently away an equal good wish; and when you get back and find this lying on your mat I hope you seize it with glee!

If anyone wishes to have a full copy of Michael Harris' Obit and a very gentle Irish ballad in his honour (I had no room to include them), please contact me.

An exciting new wedding venue

(until now, this was the best kept secret!)



Superb Food Attentive Staff
Magical Location Affordable Prices

Norman Court School

West Tytherley, Nr Salisbury

www.normancourt.co.uk Tel: 01980 862345

enterprises@normancourt.org mobile: 07899 938 667

Your Letters

Braishfield Heroes

They say that Good Samaritans are in short supply these days but Braishfield has more than its fair share.

When the tornado struck Braishfield on Tuesday 3rd November 2009 Tim, Janet, Sue, Michael, Neville, Ann and others were waiting in the wings.

We had left for Heathrow at 7.30am en route for a Black Sea Cruise. The tornado ripped off our garage roof but our heroes were quick to respond making a temporary repair, and thus preventing the house from flooding. They had even arranged an insurance estimate. We would like to thank them all for their kindness without which we would have returned to a disaster zone.

Ron and Jan Blizard
Springfield

Braishfield School Sports Day supports Senior Citizens Lunch

On a very hot day in June, Braishfield School held their Sports Day. This was a day full of sport and fun on the Recreation ground. During the day Mrs Fielding, Mrs Connolly, Mrs Light, Mrs Pike and some parent helpers served bacon rolls, lovely homemade cakes and cream teas. A grand total of £225.70 was made and will go towards next years Senior Citizens New Years lunch.

If any villager has recently reached the age of 65 or if any new villagers would like to be added to my list for the next party please ring Sharon Fielding on 368164.

I would like to thank everyone who attended Sports Day for their generous support.

Sharon Fielding

Your Letters (cont)

Katharine Edmonds, resident of Farley Chamberlayne for 44 years, now wishes to sell her property.

It would be wonderful if a local person (family or friend) would like to purchase:

Farley Dell

Farley Chamberlayne

Braishfield

Romsey

SO51 0QR

01794 368457

edmodic@metronet.co.uk

Stray Cat

Has anyone lost or does anyone know of someone missing a male ginger cat? Obviously domesticated, very friendly and has been doctored. Currently spending most of it's time and being cared for by us. Please contact Bob or June Thomson on 368553 if you can

Yoga

at Braishfield Church Room

Suitable for all levels

Starting in September, classes are on Thursdays

£25.00 for a block of 4 classes (based on min. 5 people)

If I can find a minimum of five absolute beginners, I can offer an 'Introduction to Yoga', again, in a block of 4 weeks, after which you will have a basic experience of yoga.

One-to-One sessions also available

For additional information please contact me, Gabriela Keeley

GARRETT
CONSTRUCTION

Braishfield's Builder

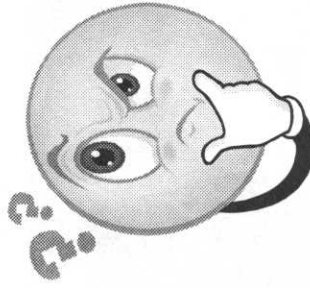
All manner of building work undertaken
In need of a quote? Please ring Mark or Steve

on **01794 368280**

E-mail: markstevegarrett@hotmail.co.uk

See work we've done in the Village

Computer Problems ?
Software Problems ?
Printer Problems ?
Network Problems ?
Wireless Problems ?
Copier Problems ?
POWER Problems ?



Very Low Cost "drop in" or Local Call Out Rates
Wide Range of Computers, Laptops & Peripherals
Free Advice

Quick Effective Service

MiKopy Ltd

01794 511114

www.mikopy.com

Retirement

Norman Fielder retires after 23 years service to the Village Hall Committee and the Parish Council.

Norman has maintained the surroundings to the Village Hall and Play Area together with the Carpark for the last 23 years but has decided to hang up his brush. Prior to the Village Hall AGM on 20 May, Richard Brazier, Chairman of the Village Hall Committee, and Mike Edwards, Vice Chairman of the Parish Council, presented Norman with a cheque as a thank you for his long service to the Village.

[Pic - from left to right - Mike Edwards, Mrs Fielder, Norman and Richard Brazier]



T/S

PLUMBING & HEATING SERVICES

Los Pinars, Sandy Lane, Belbins, Romsey, Hants SO51 0PD
Tel: (01794) 368091 • Mobile: 07801 661497

Oil Boiler Specialists

Installation, Servicing and Repairs.
OFTEC Registered. Oil Tank Replacement.

All Plumbing And Heating, From A Tap Washer, To Full Central Heating.

Power-Flushing Solar Heating
Underfloor Heating Full Bathroom Installation
Over 25 Years Experience

www.AbbeyParkCars.co.uk
Ben Holdaway

Genuine vehicles reasonably priced
View website for latest stock

Unit C8
The Premier Centre
Premier Way
Romsey SO51 9DG

Tel:- 01794 830373
E-mail:- ben.holdaway@btconnect.com



Obituaries

Michael George Harris—Precis of the Address

Michael died very recently and a moving service was held on 23rd June at All Saint's Church, Braishfield, where his brother gave the Address: He was born in 1949 and lived at Malthouse Farm for a large part of his life. Educated locally and then at Peter Symonds, it was clear that although evidently an "infuriatingly" bright man who could finish the Times / Telegraph crossword in 20 minutes, he was not going to pursue an academic career. Essentially a highly practical man with an instinct for engineering he much preferred repairing boats, cars or anything that people asked him to do—and he did it brilliantly. He married Peta in 1970 when he was working with Pirelli in Eastleigh, and in 1971 their son Toby was born. Sadly he and Peta separated in 1974 and he moved back to Malthouse Farm. Then involved in the cricket club, setting up the old people's Christmas dinner and the Boxing Day fancy dress fund raiser (amongst others), he was seldom at home. In an echo of Gladiator Sarah Boothman said "He was a son of the village". Incredibly stoic, he endured 8 years of illness without complaint. In all respects a perfect gentleman—amusing, witty, eloquent and caring—who is deeply missed by his family and many friends at the Newport Inn.

Mrs Diana Ingoldby - a Tribute

Diana Ingoldby died recently, and her ashes were interred in the churchyard at Farley Chamberlayne on Friday 16th July after a simple and moving memorial service. She was 84. Diana left the village last year to live in the Dower House in Kings Worthy, but had lived at Chalkpit Cottage since 1984. The first year there was spent in a caravan on site while supervising the renovation - everything had to be just right! She and her late husband, Reg, converted it into the handsome house it now is, and Diana had created the garden, which many of us had occasion to visit and admire. Her children and grandchildren were all present at the service, and her son Charles gave a moving tribute to her. As well as being strikingly beautiful in her youth, she had served as a Wren during the war (probably, he said, moving model ships around on a big map somewhere in Whitehall). He recalled a childhood where money was scarce, but visitors were unfailingly made welcome, and briefly outlined her business career running the family business for several years. Reg was her second husband, and her last years in Braishfield were happy ones, with a small group of friends and neighbours providing support after she was widowed. She will be remembered as a lovely and feisty lady, with a sharp mind and a considerable ability to get her own way!

DURBAN HOUSE

Nursing Home

We provide care for the elderly in a friendly homely atmosphere with 24 hour Nursing Care
Please ring Matron on

01794 512332

Durban House Woodley Lane ROMSEY SO51 7JL



36 The Hundred, Romsey, Hampshire, SO51 8BX
Telephone: 01794 514455 Facsimile: 01794 518108
Email: sales@michaelrhodes.co.uk
www.michaelrhodes.co.uk

Estate Agents

Selling Property in Braishfield and
other Test Valley Villages

Tel:- 01794 514455 Fax:- 01794 518108

Website:- www.michaelrhodes.co.uk
E-mail:- sales@michaelrhodes.co.uk

View our Property List on line

The Village Quiz 2010

Friday 26th November

7-30pm

Braishfield Village Hall

Teams of 4* £3 per head

Entries representing Village Associations,
Activities and Groups encouraged
Bring your own refreshments

*Teams can be formed on the night

Remember the BVA Website www.braishfield.org

Rubbish News

Recyclable materials in cardboard boxes left beside the brown bin on recycling weeks will be collected throughout the year

Recycle weeks beginning 2nd, 16th & 31st August: 13th & 27th September

Household weeks beginning 9th & 23rd August: 6th & 20th September
(Remember collection is one day later for a Bank Holiday week)

Down to Earth Garden Machinery Romsey



Your Local Specialist
with over 40 years experience

- ⦿ Servicing & Mobile Repairs
 - ⦿ New and used Machine sales
 - ⦿ Spare Parts
 - ⦿ Oils & Batteries
 - ⦿ Hand Tools Sharpened
- Contact Les on:
07771874471
- Or leave a message or
fax on:
01794 830553

E-mail: down2.earth@virgin.net

The Dog & Crook At Braishfield

Crook Hill, Romsey 01794 368530
www.dogandcrook.com



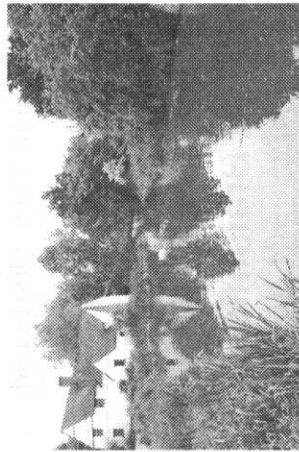
Traditional Home Cooked Food Served Daily
Lunchtime & Evening Specials—Monday to Friday
12-2pm 2 Courses £7-50— 3 Courses £9-50
5-30—9pm 2 course set menu £9-95

Selection of Real Ales
Families Welcome

Evening Meals Served Monday to Saturday 5.30 - 9pm
Sunday Lunches served 12-3pm

St John's Farley Chamberlayne Annual Charity Walk 2010

Twalkers is almost certainly over 60! We started on the Saturday, in Dedham in Essex, where we visited the Sir Alfred Munnings Art Museum and its collection of varied paintings. Climbing the 132 steps of the tower of Dedham Church gave us an opportunity to walk off lunch. We then walked to Flatford Mill where we saw where Constable painted The Hay Wain, the landscape re-



markably unchanged since those days.

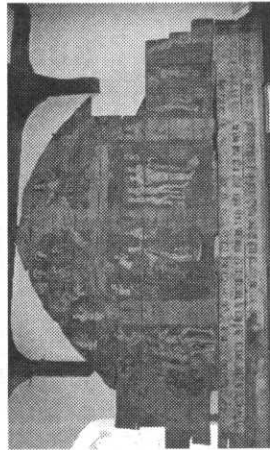
On Sunday we were in Suffolk. We saw churches in small villages that were so large against the flat landscape that they looked more like cathedrals.

The highlight of the day was the Rose Ceremony at Long Melford church, possibly the oldest rental

ceremony in Britain. The local mayor presents the Clopton family with a red rose as the annual rent for the land in which the village of Hadleigh now stands.

Monday was a long 18.5 mile day although the sun finally came out which lifted everyone's spirits. We walked from Sutton Hoo to Aldeburgh, narrowly avoiding being soaked by agricultural water sprayers on the way. Well done to Dort Summerhayes who ferried those who didn't want to walk the whole afternoon back to the hotel.

Tuesday saw us walking along the coast. Our coffee break took place under the lee of Sizewell nuclear power station and the day ended with us being rowed, nine at a time, across the river to Southwold from Walberswick. We then visited Wenham Church to see its medieval Doom Painting which is un-



usual in that it was painted onto wooden boards rather than the church wall.

On Wednesday we enjoyed lovely vistas of the Norfolk countryside, birdsong and wild flowers. In Reedham we boarded the river cruiser Southern Belle, which gave us the opportunity to experience the tranquillity of the Broads. Walkers at Reedham

On Thursday, while walking from Aylsham to Cromer, we passed through some typical English villages with their chocolate-box cottages, and on Friday, another glorious day, we walked from Cley-next-the-Sea through Stiffkey to Burnham Overy Staithe.

En route we enjoyed a fish chowder and crab sandwich lunch at Wells-next-the-Sea. On Saturday we started with an interesting walking tour of King's Lynn. We later walked near Denver Sluice - an impressive structure, vital in controlling the level of the waterways in the Fens.

Several hours later, we walked into Ely where the Open University graduation ceremony was taking place at the cathedral. No time to stop and stare though, as we had two more miles to go to the Travelodge, in order to get ready for the final dinner. On Sunday morning, all that remained for us was a tour of the cathedral following the Choral Eucharist before returning to Braishfield.

It wasn't all walking though. For those who preferred to do something else, there were some organised visits to various locations including Kentwell and Melford Halls, Sutton Hoo, Blickling Hall and Sandringham. Whether walking or not, we all learned something of interest about the places we visited.

John Edwards gave us a résumé of Munnings's life prior to visiting the art museum.

Chris Amery talked about Benjamin Britten when we were at Snape Maltings ... sadly too early in the season for any concerts.

He also entertained us with the story of the 1932 trial of the Rector of Stiffkey, which created a sensation that still reverberates over 70 years later. In King's Lynn we were given an illuminating and fascinating talk on the drainage of the fens by Michael Chisholm which gave us a new perspective on the county and its ever changing landscape.

We had fun too, starting with the BBQ at Oakfield the day before the walk started. It was ably organised as usual by Wendy Graham, Hazel and Paul Watters and others too numerous to mention but without whom it would not be the success it always is.

We had a group dinner on Sunday where we were entertained by another award-winning performance by the Farley Walk Bard, Mick Summerhayes. Supper on the Tuesday was courtesy of Wendy Graham and

her mother, Marjorie Onyett, in her farm barn at Wenhaston. They were ably assisted by William and Alex and other members of the family. The final dinner was held in the magnificent Old Library at Emmanuel College, Cambridge and a fine time was had by all.

Jimmy Chestnutt was, as usual, present at all our breaks with plenty of drinks, sandwiches, snacks and cakes to keep us going. At Wells-next-the-Sea, some of the walkers held a limerick competition. One, by David Pearson, sums



up our spirits perfectly:

Some walkers near Wells-next-the-Sea

Sped onwards with evident glee

They maintained a smile

For mile after mile

By thinking of Jimmy and TEA.

All in all, it was a great week and another fundraising success. Iain is already planning next year's walk - possibly King's Lynn to Ripon. See you all next year!

With grateful thanks to Chris Balchin for the photographs.

Property Maintenance & Handyman Services

Interior & Exterior Painting & Decorating
Wallpapering

Sheds & Fences Erected Painted & Re-felted
Grass Cutting, Hedge Cutting & Strimming

Floor & Wall Tiling
Flat Pack Assembly & Small Carpentry Work

Windows & Doors Repaired & Replaced
House & Garden Clearance

Fascia Boards & Gutters Cleaned, Repaired & Replaced
Driveways & Paths Repaired & Re-surfaced

Kitchens & Bathrooms Fitted

Ground Works & Drainage

Brick work & Re-pointing work

Collection & Delivery Service

Plus many other areas of maintenance work & odd jobs carried out

Ben Kington

Telephone : 01794 368536

Mobile : 07866551725

Fully insured References available

Free Estimates

Braishfield Horticultural Society

The one time of the year when we, as a Green Fin-gered Society, really look forward to brighter days with a spot of sunshine and perhaps a gentle cooling breeze, has to be the month of June when we look forward to venturing forth and rummaging around in other peoples gardens. Such was the case this year when we embarked upon our annual garden visits.

Our first call, right on our doorstep at The Mill House, Greatbridge, was quite a surprise to us all. The well kept garden with the River Test running through the middle seemed to go on for ever. It certainly was a huge area with much to see and admire. The owners, Mr & Mrs Saunders-Davies were on hand throughout our time spent there to answer any questions, which was appreciated I am sure by everyone. It was an evening well spent and enjoyed by all who came along.

Our second visit which was to The Manor House at Exton, proved once again to be a successful and enjoyable occasion. The weather was kind to us and around thirty members made the journey. Mrs Tina Blackmore, the owner was on hand to explain how the garden developed during her time in residence. A fairly large area, it was made up of a walled garden with herbaceous

borders, lots of colour, a kitchen garden, a woodland walk and a very nice swimming pool which none of our members took advantage of. I did hear mention of "skinny dipping" but apparently no one had the courage to take the challenge. Another evening well spent.

Our final trip away was, of course, to Sandhill Farm, Sherfield English, home of Mr & Mrs Andrew McIndoe. This again is a large and beautiful garden, obviously created by an expert with split levels, a pond area and many interesting trees, shrubs and plants. On this occasion, Andrew gave us a conducted tour during which he explained his reasons for the general layout and combination of colours.

The whole area being maintained by Andrew and his wife. Quite a challenge. To end our visit to Sandhill Farm, we were entertained to a goodly supply of wine and very tasty nibbles, courtesy of our hosts.

In conclusion, we must thank Jill for her excellent choice of gardens once again. It is no easy task finding something different each year and which continues to create interest. As has now become the custom, each visit was rounded off with a gathering at a suitable hospitality for a meal and of course, the now well practiced right arm exercises.

Once again, well attended, the

company was great, the food was good and from the level of noise raised on each occasion, the parties were enjoyed by all. I feel sure that the pubs involved will not forget the BHS. Here's to next year.

With the thoughts of last years weather fiasco very much on our minds, we could not be blamed for being a little apprehensive as the time for our annual Flower Show drew closer, however, came the day and all was well. Not too hot, a gentle breeze and lots of sunshine. A number of stalls were set up on the recreation ground, together with a few car boots and one or two games.

In the Village Hall there was a magnificent display of flowers, fruit, vegetables, culinary items, and handicrafts, together with 125 entries by the children of the Braishfield Primary School and the Brownies. Altogether there were almost 400 entries in this year's Show which was of great satisfaction to all those who had worked to put the event together.

There has to be a big pat on the back for all who took part. The one thing that was missing was the absence of music on the recreation ground. This was not the fault of the organisers, arrangements had been put in place, but we were let down at the last hurdle. The number of visitors was about the norm, although a few more faces would have been most welcome.

At around 4.00pm it was time to hand out the awards, a duty carried out this year by Mrs Franzisca Clifton, the Head Gardener at the Sir Harold Hillier Gardens and to whom we are most grateful.

We began the ceremony with awards to a regular winner, Sylvia Watts, of The Watkins Cup, highest points for Flowers, Plants, Fruit and Vegetables, the Bacon Cup with highest points for Flowers and Plants and the Braishfield Horticultural Society Fuchsia Cup for a Single Fuchsia.

The Attlee Cup, highest points for Fruit and Vegetables was won by Ian Ross, together with the Bartlam Cup, highest points for Fruit. Ron Watts, husband of Sylvia, took the King Cup with highest points for Vegetables.

The Braishfield Horticultural Society Ladies Rose Cup was awarded to Maggie Batchelor. Denise Bright took both the Dawkins Cup, most outstanding exhibit in the Flower Arrangement Section and the Vine Cup with highest points for Flower Arrangement Classes 52, 53 and 54.

The Braishfield Flower Arrangement Society Rose Bowl for the best entry by a novice went to Eileen Norman. The Braishfield Parish Council Cup for highest points in Flower Arrangement Classes 55, 56, 57 and 58 was shared by Hazel Prince and Maggie Batchelor.

Charlie Gardener won the Ron Hodgson Cup for the age group, 10 and under, Junior Flower Arrangement.

The Hebblewaite Cup with highest points in the Adult Culinary Section went to Helen North.
The Chairmans Prize for the winner of Childrens' Pre-School and year R was awarded to Olivia Coleman and the Braishfield Womens Institute Cup for highest points for Children in Years 1 to 10.

Max Marshall and Lucy Talbot shared the Hobcraft Cup with highest points for Children in Years 3 and 4, whilst the Vine Trophy went to Stephen Smith in Years 5 and 6. Max Marshall also won the Cottle Trophy for the best entry in the Handicraft Section and Emma Talbot received the Certificate for highest points in the Handicraft Section

The Certificate for the best entry in the Culinary Section was awarded to Helen North and Peter Quarendon was the winner of the Men's Special Guinness Cake. The President's Challenge Salver for the Best Entry in the Horticultural Sections-Flowers and Plants, Fruit and Vegetables was won by Ian Ross.

Finally, The Girlie Old Cup for a Planted Eccentric Container was won by Carole Renvoize with Alex Marshall 2nd and Hazel Prince 3rd.

Congratulations, not only to all these winners, but to all who took part and helping to create a very successful Flower Show.

With the all the summer events now over and all relevant paraphernalia stowed away for the another twelve months, we have the usual break from activities during August.

On Tuesday 14th September we begin the final part of our annual programme with a visit by Tim Woodland who will talk to us on the subject of "Bulbs For Naturalising".

The October meeting on Tuesday 12th will be when we welcome once again Jeremy North, who this time will give a talk on his "Recent Projects". Be sure to update your diaries.

We then move on into November when on Tuesday 9th, all the excitement of the Annual General Meeting will be with us once more. Where has the time gone? It only feels that the last one was but a few short weeks ago.

The December party times will soon be upon us. "Wow".

Meanwhile, enjoy the rest of the summer, assuming the weather holds and may your BBQ's burn brightly. Be happy.

Bob Thomson
BHS Secretary & Scribe. .



NORMAN COURT
PREPARATORY SCHOOL

Co-educational Day and Boarding School for children aged 3 to 13

"An outstanding ethos for learning"

Source : ISI Inspection report

Daily minibuses from Romsey available

West Tytherley, Salisbury, SP5 1NH
Tel: 01980 862345

www.normancourt.co.uk

Seasoned Hardwood Logs



Locally grown Timber
cut and split to your requirements
Tel:- 01794 368513

Love food hate waste

UK households are throwing away 8.3m tonnes of food a year, most of which is perfectly edible. A typical family with kids bins £680 worth. Equally unsettling is the environmental cost - the wasted water and energy in growing and transporting uneaten food and the methane it produces in landfill. So, how can we do better?

1) Send less food to landfill

WRAP, the UK authority on waste & recycling, recommends that we plan meals, manage portions, keep an eye on 'use by' dates, and freeze surplus (See lovefoodhatewaste.com).

2) Compost food waste

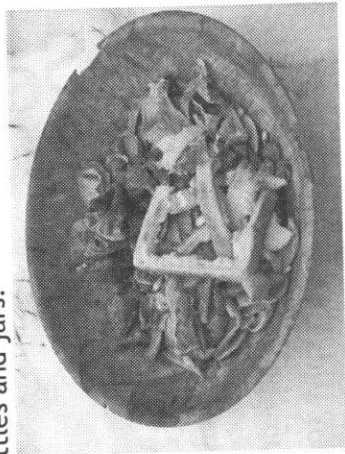
Over 30% of average household waste could be composted. Peelings and tea bags can be converted into rich food for your garden. Home composting doesn't starve waste of oxygen so it releases very little of the potent greenhouse gas methane.

3) Recycle food containers

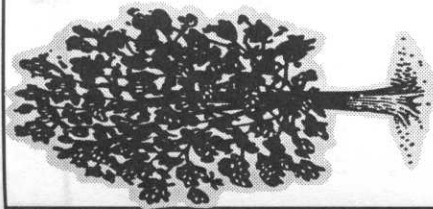
On average the UK resident sends 2000kg of waste to landfill every year. Why not recycle? Aluminium cans are one of the most cost effective materials to recycle. Compared to manufacture from scratch around 95% of energy can be saved. 80% of all glass sent to recycling reappears in the UK, mostly as new bottles and jars.



Recycling: start them young!



Composting produces rich soil for plants



BRAISHFIELD TREE SURGEONS

Specialist tree surgery and advice

Tree surveys carried out
Professional service in all areas
25 Years Experience
LOGS . WOODCHIP.
HEDGE CUTTING

Contact Ian Knight on
01794 368794 or 07500 968373

Email katel.knight@googlemail.com

GM Property Services Ltd

Quality Property Maintenance & Improvement

For all aspects of building maintenance, home improvements and repairs including;
Tiling, Walls & Floors

Laminate & Hardwood Flooring
General Carpentry & Repairs
Painting & Decorating
Kitchen & Bathroom Fitting
Garden Maintenance including Decking and Turfing

No job too small, competitive rates & FREE Estimates.

A friendly, Reliable & Professional Local Service References Available

Call: 0845 116 2414 (Free from BT Landlines)

Mobile: 07843 413268 Email: enquiry@gmpsltd.co.uk

Braishfield Parish Planning

a) Applications pending or recent outcome

HCC/2010/0080	RF Salvidge, Bunny Lane	Remove requirement for bund	Obj	Withdrawn
HCC/2010/0082	RF Salvidge, Bunny Lane	Create skip park	Nobj	
10/01031/RESS	Abbotswood, Braishfield Road	Highways reserved matters	Obj	
10/01039/FULLS	14, Hill View	Additional dwelling	Obj	
10/00528/FULLS	Chalk Pit Cottage, Braishfield Road	Rear extension	Nobj	Permission
10/00702/FULLS	Ampfield Cottage, Dores Lane	Two storey extension	Nobj	Withdrawn
10/00849/FULLS	Hazel Cottage, Braishfield Road	Single storey extension	Nobj	Permission
10/00631/FULLS	Apple Cottage, Braishfield Road	Extension	Obj	Withdrawn
10/00164/FULLS	Merriemeade Farm, Church Lane	Extensions	Nobj	

PC original response - Sup supported, Obj objected, Nobj no objection

b) New Planning Applications

The Council considered new planning applications as follows:

10/01441/FULLS	Ampfield Cottage, Dores Lane	Two storey extension	No objection
10/01505/FULLS	Apple Cottage, Braishfield Road	Extension	No objection
10/01334/TREES	Berberis, Braishfield Road	Tree work	No objection
10/00875/FULLS	Dog & Crook PH, Braishfield Road	Extensions	Support
10/01421/TPOS	Colsons Barn, Church Lane	Tree work	No objection
HCC/2010/0175	Hunts Farm sand-pit, Rudd Lane	Changes to conditions	No objection
10/01572/RESS	Abbotswood, Braishfield Road	Recreation areas	No comment
09/02621/FULLS	Fairbourne Bungalow, Braishfield Road	Replacement dwelling	Objection (see below)
10/01410/FULLS	Meadow View, Newport Lane	Extension	Objection (see below)

For information on planning applications in Braishfield and for copies of Parish Council Minutes etc, you can find these on www.braishfield.org.uk

All Saints' Church, Braishfield

Michaelmas Fayre

Saturday 18 September 2010

2.30 - 4.00 pm

In the grounds of the Church and Church
Rooms

Cream Teas

Stalls

Contributions of cakes, jams, chutneys, plants, vegetables
and books will be most welcome

In aid of All Saints' Church



Your local officers are:



Sergeant Christine Plascott



PC Vernon Gook



PCSO Jo Cole

ROMSEY RURAL SAFER NEIGHBOURHOODS REPORT JULY 2010

Welcome to the latest newsletter from your Safer Neighbourhoods team for the Romsey Rural beats.

ACTION UNDERTAKEN IN RELATION TO YOUR PRIORITIES

You said: You were still concerned about speeding motorists and inconsiderate parking in the villages.

We did: We have been working with our colleagues from the Roads Policing Unit to consider and assess reported locations for enforcement operations. A number of speed enforcement operations have now taken place in Ampfield, Braishfield and Trimsbury and over the next month we will also be focusing our attention on other villages, particularly Awnbridge. A number of motorists have been advised regarding parking outside schools. Can we please remind everyone to be considerate and to consider the safety of pedestrians and other road users when parking or dropping off at schools.

This issue remains a priority for us this month.

CRIME PREVENTION

We have recently received a number of reports of suspicious incidents in Sherfield English and there has been a burglary and theft reported in this area. We are investigating these incidents and are conducting regular patrols in the area. However, can we please urge all residents from all villages to remain vigilant and to take precautions to secure your homes and outbuildings.

1. Ensure that gates and access points are closed and secure when you are out.

2. All outbuildings should be locked and secure and if you have to store equipment inside (such as mowers, pressure washers, quad bikes etc) please ensure that these are locked inside the building.
3. Bushes and hedges should be trimmed so that landscape and buildings are visible from your house.
4. Mark and photograph any valuable equipment and keep a note of serial numbers or other details that can help with identification.
5. Be alert to any suspicious people or vehicles in the neighbourhood and notify our team via the details provided on this report.

Also be mindful that any unexpected callers at your door may not be who they say they are. There have been some distraction burglaries in the Romsey area recently. Do not let anyone in unless they show you appropriate identification. If you're not sure, don't open the door!

JUSTICE SEEN, JUSTICE DONE



Crime levels are relatively low in your area but even so, your local officers have been busy bringing any offenders to justice in order to keep the neighbourhood a safe place to live and work.

A man has been arrested for criminal damage in the area of Lockerley.

A motorist has been spoken about driving at excess speed in Awnbridge.

A woman has been arrested on suspicion of vehicle theft in Wellow.

A person in Wellow has been charged with failing to keep a dog under proper control.



To report anti-social behaviour and neighbourhood issues, call 101.



Hampshire & IOW

CRIMESTOPPERS

0800 555 111

In an emergency, dial 999.



Braishfield Flower Arrangement Society

Programme for 2010

- Sept 23rd 'Second-hand Rose', Carole Norman
Oct 28th 'Tutti Frutti', Helen Gibbons
Nov 25th Open Evening 'The Holly & the Ivy', Marion Catt
Dec 13th Christmas Workshop – please note—Monday

All meetings are held in Braishfield Village Hall at 7.30pm
4th Thursday in the Month (nb—Monday 13th Dec)

Membership is £18 per year.

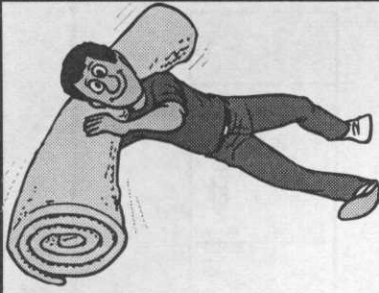
Visitors are very welcome at £3.50 per evening.

For more information please call:

Betty Horton, Chairman on 01794 368249

Ann Cummins, Vice Chairman on 02380 265454

Please cut out and keep this programme of events.



Graham Parrick Carpet Fitting

All types of carpet supplied
and fitted. Free Quotations

Tel:- 01794 323173
07831 858615

STICKLEY PAVING & LANDSCAPES

Family run Business for 35 years

All aspects of Landscaping
from Design to Completion

We manufacture our own
range of Paving Slabs

Free Consultation & Quotation

Tel / Fax : 01794 368694

Mobile : 07770 452631

- * Patios
- * Driveways
- * Turfing
- * Planting Schemes
- * Low Maintenance Gardens
- * Guaranteed Work

