

Braishfield Village Diary

February 1st	Mon	7-30	Wives Group Plus Church Room Jane Finnemore - Kumiehimo, Japanese braiding
2nd	Tues	7-00	Braishfield Parish Council
8th	Mon	12-00	Lunch Club in <u>Church Room</u> - All welcome
9th	Tues	7-30	Braishfield Horticultural Society Steve Renvoise - Travels in South America
17th	Weds	12-2	Police Presence in Village Hall Car Park
23rd	Tues	8-00	Braishfield Music & Drama Society AGM - Church Room - all welcome
25th	Thur	7-30	Braishfield Flower Arrangement Society Denise Bright - Especially for you
March			
1st	Mon	7-30	Wives Group Plus Church Room
2nd	Tues	7-00	Braishfield Parish Council
5th	Fri	7-30	Wives Group Plus Women's World Day of Prayer - All Saints
8th	Mon	12-00	Lunch Club in <u>Church Room</u> - All welcome
9th	Tues	7-30	Braishfield Horticultural Society Steve Renvoise - Travels in South America
17th	Weds	12-2	Police Presence in Village Hall Car Park
23rd	Tues	8-00	Braishfield Music & Drama Society AGM - Church Room - all welcome
25th	Thur	7-30	Braishfield Flower Arrangement Society Divine Inspiration - Katie Baxter
Weekly			
	Weds	10-12	Braishfield Toddler Group Term Time Only
	Thurs	10-12	Braishfield Art Group

All functions take place in the Village Hall unless otherwise stated
Please refer to Braishfield.org or your Residents Guide for contact telephone no.s
Please send details to the BVA News Editor or Web Editor if you would like dates of forthcoming events to be published

BRAISHFIELD Village Association NEWS

Issue 179 February 2010



On the 28th November the New Play area was opened by
Father Christmas whilst he was visiting the
School Christmas Fayre

Distributed free of charge by the Braishfield Village Association
to the residents of Braishfield and the surrounding hamlets

Braishfield Village Association

Committee 2008-2009

Chairman	-	David Robinson	368774
Secretary	-	Rosie Groves	368178
Treasurer	-	Sheila Still	368384
BVA News Editor	-	Mike Mullane	368099
News Distributor	-	Anne Edwards	368193
Website	-	Chris Balchin	368427
Committee	-	David Protheroe	367003
		Graham Bennett	368109
		Rosalie Gurr	368315

Editors Notes

This magazine is produced by the Braishfield Village Association and the Editor reserves the right to elaborate, withhold or abridge material as space permits. The views expressed in this Magazine are not necessarily those of the Editor or of the Braishfield Village Association. Any form of reproducing or copying of this publication requires the prior written permission of the Editor. © Braishfield Village Association 2006

Written items for the 'News' should be sent to:-

The BVA Editor PLEASE NOTE THE NEW DETAILS
Hazel Cottage, Braishfield Road
Braishfield

Hants SO51 0PR by the date shown below.
Copy may written, typed or on PC media but, ideally, by
e-mail to mike@braishfield.org

All items for publication must show the name, address and telephone number of the originator. Letters to the Editor should be on topics relevant to the villagers of Braishfield. The BVA attempts to deliver a copy of the Braishfield Residents Guide and the Village Design Statement to all new residents. If you have not received these publications please contact the News Distributor, Anne Edwards on 368193

Latest Copy date for the next issue is
15th March 2010

From the Chairman

Caught napping over Christmas. I'm, sorry, what was that? I was just resting my eyes for a moment. Oh yes, afternoon naps. They sneak up on us half an hour after lunch, roughly coinciding with the repeat of The Archers. Whether we have been using brain or brawn or merely idling, that familiar feeling sweeps over us. We need to nod off and many of us thrive as a result.

Welcome in the New Year! It seems to have been a long time in coming and I hope you survived the desperate days before Christmas when even picking up the newspaper from the Box was a hazard. There is no such thing as bad weather, goes an old country saying, only bad clothing. This is one great difference between the metropolis and the countryside. In the latter, people are used to soldiering on. So their voice is not one that has sounded much since the credit crunch took hold. We can't stand moping for very long as life must go on. Rural Britain does not have much of a cappuccino culture; it dislikes froth. The good news is that the recession has blown that off and restored a degree of sanity.

We all anticipate Spring. New and renewed life will be all around for us to see. We have all considered at some time the question, how and when do birds 'know' how to build their nests? You only have to watch a female sparrow rejecting

one piece of dried grass for her nest in favour of another, to wonder at her intuitive skill. Having considered the global issues affecting our lives, it is very thought provoking to watch one small bird living out its own destiny, oblivious to all outside influences and just 'doing what comes naturally'.

Last year I failed to thank our volunteer litter 'pickers' who have so successfully kept the village byways clean. The standard maintained within the village is very high and says much for the care that is taken by our 'pickers' and resident 'folk' themselves, not forgetting the children while they are enjoying themselves outside too. We can say with confidence that as a community we have got the message 'stop the drop' but we need to keep sharing the burden....! You will have seen in the December News that our Editor, Mike Stevens, wishes to stand down after four years hard but enjoyable work. Much has been achieved and we are grateful to Mike for his contribution to village life, for the News is very much part of it. He has made a number of generous offers providing an opportunity to learn a new computer skill with free software and training. Mike Mullane of Hazel Cottage, already experienced, is keen to take up the offer for which we are grateful. While we are on the subject let me take the opportunity to thank all

the contributors to the News during the year, also the Printer, Ken Gould, and Distribution team of 14 under Anne Edwards. The Village benefits enormously from their efforts by uniting our community through a simple means of communication by the News.

Two positive notes of encouragement occurred in December. First, the firm which erected the Play Area by the Village Hall completed their work before the estimated time. Overnight there was no vandalism of any kind and site was found to be untouched the following morning, so the work was completed early. The work 'foreman' expressed his surprise at this unusual event! Second, a visitor arrived at the Village Hall from Farnborough. In passing, he questioned the purpose of the Newspaper Box and being told its use for the village community, exclaimed 'Blimey, that could not happen where I live!' Surely, we can truly count our blessings for living where we do.

Many of you will be aware that the BVA is to have a new Chairman, David Robinson with effect from this month. I am sure

you will be pleased and allow me to bow out. David is a great enthusiast with many interests. He will be a steady navigator and encompass the various aspects of village life and be in support of the Parish Council. Together, much can be achieved and I wish the Committee continuing enjoyment in their work. Our meetings were always fun and I am grateful to the members, past and present, for their friendship and support. Their contribution has been enormously helpful to me - and saved a tumble or two into 'traps' laid by Poo!

We were fortunate to attend the morning service at Farley Chamberlayne on Christmas Day. It was a beautiful morning and the one and only church bell rang out to complete the celebration and lift the spirit. The resonance was telling a story.... When expressing our appreciation to the ringer, John Rawson-Smith, he replied: 'You know that bell was first rung in 1402 - the date on the bell!' Now there's a thought....

I wish you all a prosperous and happy 2010

George Elliott
Chairman

Rubbish News

Recyclable materials in cardboard boxes left beside the brown bin on recycling weeks will be collected throughout the year

Recycle weeks beginning 1st & 15th February. 1st 15th & 29th March

Household weeks beginning 8th & 22nd February. 8th & 22nd March

Your Letters

DON'T DITCH YOUR RESPONSIBILITY FOR CLEARING ROADSIDES

Keeping roadside ditches clear of vegetation and debris is an important way of preventing winter flooding.

Now the colder, wetter weather is here, it is even more vital to make sure our roadside ditches are well looked after.

Many home owners are not aware of their duty to keep ditches clear. This includes maintaining any roadside ditch running along their road frontage - even if it is well within the verge. Most ditches also take surface water runoff from the highway, but this does not change the responsibility for maintenance. Although the County Council do not routinely look after these ditches, we will take steps to protect roads from flooding wherever possible.

It is therefore essential that grass cuttings and other waste is not dumped in ditches. Regularly clearing shrubs and small branches helps maintain the water flow and prevents flooding of roads and gardens. Ditches are also important for biodiversity and have a much larger capacity than most piped systems. So we must continue to look after them - they are an important part of our rural heritage and need good management.

(forwarded from Hampshire County Council Highways in their November 2009 edition on Inroads)

CAT FOUND

He had somehow sneaked into a house and couldn't get back out. He was too scared to show himself. When discovered by the family and let out he rushed home and looked very well if slightly thinner. (Which was good as he was overweight!)

Thank you to everyone my son and I spoke to or who read the posters when our cat went missing for 4 days.

Clare Willett

FITNESS TRAIL

At its meeting on 3rd November, Braishfield Parish Council agreed to the proposal for a fitness trail on the Recreation Ground and will support the Village Association's grant application towards it. However, the Council wishes to have a further look at the detail of the signage associated with each station on the trail. Perhaps in due course the BVA could provide the Council with information on exactly what is proposed for each station.

John Rhodes

From The (old) Editor

Please welcome Mike by sending him your articles and any other input you may have. His details are on page 2 of the news

Needless to say I have enjoyed my time as editor but my life now takes me further away from the village and family commitments take up more and more of my time. I would like to thank all of the members of the BVA for their support over the years and also a huge thank you to anyone who has submitted articles for inclusion in the magazine.

I have every intention of continuing to advertise in the Braishfield News and also to continue sponsoring the annual residents guide.

Please feel free to continue to use my services as I am only in Wellow and travel the local area on most days.

Wishing everyone in Braishfield all the best for the future, this is Mike Stevens signing off.

In 2005 I was approached by Clive John, the editor at the time and asked if I was interested in taking over from him. He had been looking to pass on the post for about 18 months.

My first full offering was the December 2005 issue and I have duly put all of the bi-monthly magazines and the annual residents guide together since then - until now

Following my request in the last issue, I was immensely happy to take a phone call from Mr Mike Mullane. He lives in the heart of the village and was extremely keen to take over the challenge.

His first full issue will be April but he 'ghosted' me on this issue and we then compared notes to find the best of both.

I will continue to be available to Mike for any questions over the coming year

From The (new) Editor

Anyway, here I am, delighted and honoured to have been adopted as your new Editor.

Frightened witless, of course, but determined to get it right. The one thing I never fear is merciless criticism, so please let it rip after my first edition in April!

Mike Stevens is quite clearly a very strong example to follow, but he has very generously offered himself for months to come as a "guru" to keep me on the right path.

Most importantly, this is a wonderful opportunity for both of us to meet you all.

Please send in anything which you would like to be published. I look forward to the challenge of supporting our village.

Mike Mullane

Please see my contact details on page 2

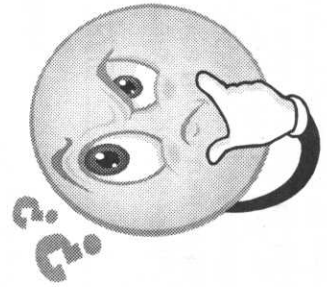
blame my wife, Sue. She saw Mike Stevens' call for a replacement in the last edition of the Braishfield Village Association News and told me firmly that this was my "calling". I grumbled of course on the basis that we had only been in the village since March 2009 and I was hardly in the position to grab the tiller of such a vital element of local interaction and communication.

In the end I agreed to phone Mike Stevens and put my name forward. I had had a small background in editing after I left the Royal Navy - a magazine produced within the Royal Navy simply to keep people informed about what the Navy was up to world wide, simply because sailors at sea are often very much "head-in-the-sand" as far as the world beyond their ship is concerned. Also producing a few internal PR videos trying to achieve the same trick. Great fun.

**Very Low Cost "drop in" or Local Call Out Rates
Wide Range of Computers, Laptops & Peripherals**

**Free Advice
Quick Effective Service**

MiKopy Ltd
01794 511114
www.mikopy.com



**Computer Problems ?
Software Problems ?
Printer Problems ?
Network Problems ?
Wireless Problems ?
Copier Problems ?
POWER Problems ?**

Tribute to Andrew Lalonde

Popular auctioneer admired for his kindness, loyalty, professionalism and good humour.

Well-known auctioneer and former president of Romsey Show, Andrew Lalonde, has died at the too early-age of 66. A service of thanksgiving took place at All Saints', Braishfield, next door to his home at Long Barn. It was a testimony of his popularity that the church was overflowing. His brother-in-law, Robert Vallings, said: 'We will remember him for his integrity, openness, professionalism, loyalty, strength in adversity, kindness, modesty, appreciation of those who helped him, his humour, outgoing personality and unselfishness, his love of holidays, but above all, for his love of his friends and interest in others, particularly his love and devotion to Sue, his children and grandchildren.'

Andrew Parham Lalonde was born in Wykeham House, Romsey in June, 1943, the third child of respected local GP, Dr Tom Lalonde and his wife, Kathleen. His first experience of school was being 'whacked by a ruler' by Miss Waters in Alma Road, before, at seven, going to board at Eastacre, Winchester

and Durlston Court, New Milton.

As well as his family, he left behind the German au pairs his parents employed, not without local opposition, soon after the war. The two continued to exchange letters with Andrew 60 years on. Completing his schooling at Queen's, Taunton, he became an 'articled pupil' at James Harris & Son, chartered surveyors, land agents and agricultural valuers, in Winchester in 1963, where his brother, Robin, was already employed. Soon after, he met Sue. They were wed in 1969 and moved to Apple Cottage, Braishfield, where their children Tessa, Anna and Tom grew up.

Andrew became a partner in James Harris in 1970 and soon established himself with the dealers and farmers as 'the auctioneer for finished cattle' in Winchester market.

In 1998, James Harris became part of Savills, where Andrew was first a director and then a consultant. He was a lifelong supporter of Hampshire YFC, where he was president and in 2006 was President of the Romsey Show, a reward for the countless jobs he did behind the scenes.

He became the secretary of the Hampshire Farmers' Club and was also involved with the

Hampshire Growmore Club. Socially, he enjoyed his evenings at the Beef Steak Club and the Hampshire Club Lunch. A good companion, with a wealth of experience, and with whom it was a privilege to share a table.

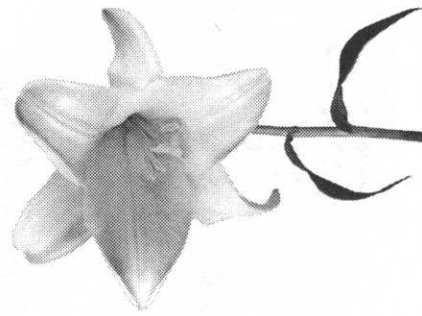
The death of Sue in 2002 hit him hard. He told friends her passing robbed him of the 20 years they were looking forward to. But he picked himself up, started giving dinner parties and began to travel widely.

He was on the Hampshire Council for St John Ambulance and a tireless volunteer at the Countess Mountbatten House Hospice, ferrying people backwards and forwards, covering 29,000 miles.

In Braishfield, which was ever close to his heart, he served on the parish council as a member, chairman and clerk. He steered a very steady ship, the Council, and the Parish benefited enormously through his network of contacts, the majority of whom were his friends. Many charities will miss his auctioneering skills. Andrew had a particular talent as an auctioneer, made more pronounced by an ability to pitch his voice to reach every corner of a 'foreign field'. His skill was absorbing as many found to their cost. Those, no matter how determined to be sensible, who attended an Auction of Promises with Lalonde conducting, found

themselves carried away with exuberance with their bids, and a generosity that they never knew they possessed! The 200 Club, for which he set up and worked so hard, made a significant contribution to the recent restoration of the Church Room. He was a great supporter of the Lunch Club and added an X Factor to the event when he made village 'announcements', lightly, and drew with a flourish the monthly winner of the 200 Club. He showed great courage in the closing stages of his life as he battled on, always cheerful despite the uncertain future that confronted him. We will miss his ebullient style, warmth of his greeting and the resonant tones, heard by many who were passing, over his garden wall. He will be greatly missed, as a character, a true friend and confidant, for when asked his advice it was freely given and respected.

GE



BRAISHFIELD VILLAGE HISTORY

The House Archive

Last year we distributed a number of questionnaires requesting information about the history of your houses. We would like to thank those of you - 30 so far - who have gone to some trouble to return the forms: you have made a valuable contribution to this project.

This represents about 10% of the houses in the village, so we still need more returns. If you have mislaid your form, or never received one, please contact us and we will bring you a new one. You do not have to use the form - you could email us or copy any documents that might interest us.

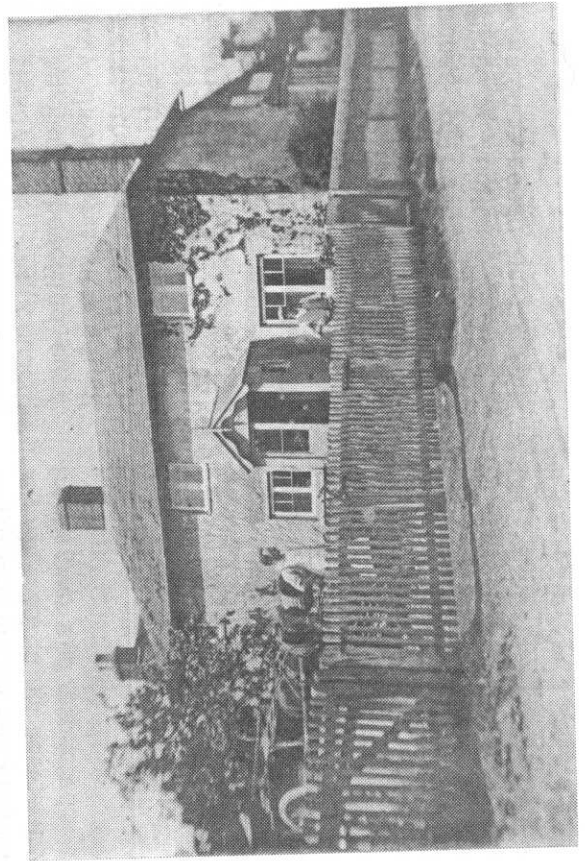
We are collating the information we have received so far, together

with the census information since 1841. We hope to publish some results by the end of the year. As a consequence of this work, we are building up a 'database' that might enable us to help other people in the village who trying trace the history of their house or people

We hope that you will wish to participate in this valuable local project. Any information, however insignificant it might seem at first, will be helpful in building up a picture of the history of people and their lives in Braishfield.

Rosalie & Alan Gurr
The Old Village Stores
368315

rosaliegurr@talktalk.net



T S

PLUMBING & HEATING SERVICES

Los Pinares, Sandy Lane, Belbins, Romsey, Hants SO51 0PD
Tel: (01794) 368091 • Mobile: 07801 661497

Oil Boiler Specialists

Installation, Servicing and Repairs.
OFTEC Registered. Oil Tank Replacement.

All Plumbing And Heating, From A Tap Washer, To Full Central Heating.

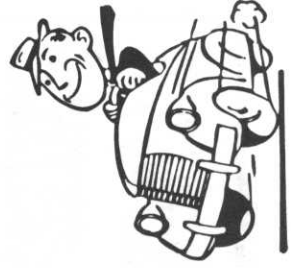
Power-Flushing Solar Heating
Underfloor Heating Full Bathroom Installation
Over 25 Years Experience

www.AbbeyParkCars.co.uk
Ben Holdaway

Genuine vehicles reasonably priced
View website for latest stock

Unit C8
The Premier Centre
Premier Way
Romsey SO51 9DG

Tel:- 01794 830373
E-mail:- ben.holdaway@btconnect.com



Susan Kemp

Susan, who knew Braishfield, and Eldon Lane in particular, all her life passed away peacefully at home on December 14. Before she died she wrote:

I would like to thank all the people for their friendship, and support during my 8 years plus battle with cancer (Mesothelioma).

One of these kind friends wrote this to her a few days before she died:

' So good to see you to-day - calm and cheerful as always, and wanting to hear all the news. We cover such a wide variety of thoughts and ideas when we sit together in your 'window on the world' and the time flies. We are old friends but more than that you are someone

whose faith and courage over the last eight years has made me re-evaluate my own thoughts on life. I hope you know how much your friendship means to me and to everyone who knows you.'

Another wrote these words on hearing of her death:

' I could talk to Susan about anything - we'd jump with ease from books to family to films, local gossip and the occasional horse! I know many good orators but very few good listeners and Susan was one of them - she was 'as sharp as a tack' when it came to personalities and connections and would remember the finest of detail. I shall really miss her.'

Thomas McCarthy

Offers a Quality Painting and Decorating Service
Interior and Exterior Work Undertaken

No job too small

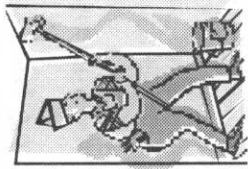
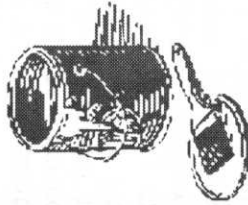
For a Free Estimate Call:

North Baddesley

02380 739836

Mobile 07990 695111

2, Poplar Way, North Baddesley, Southampton. SO52 9FW



STICKLEY PAVING & LANDSCAPES

Family run Business for 35 years

All aspects of Landscaping
from Design to Completion

We manufacture our own
range of Paving Slabs

Free Consultation & Quotation

Tel / Fax : 01794 368694

Mobile : 07770 452631

- * Patios
- * Driveways
- * Turfing
- * Planting Schemes
- * Low Maintenance Gardens
- * Guaranteed Work



MICHAEL RHODES

36 The Hundred, Romsey, Hampshire, SO51 8BX
Telephone: 01794 514455 Facsimile: 01794 518108
Email: sales@michaelrhodes.co.uk
www.michaelrhodes.co.uk

Estate Agents

Selling Property in Braishfield and
other Test Valley Villages

Tel:- 01794 514455 Fax:- 01794 518108

Website:- www.michaelrhodes.co.uk
E-mail:- sales@michaelrhodes.co.uk

View our Property List on line

Bill Pearce 1913 - 2009

Bill was born on 3rd January 1913 and grew up with his parents and his sister Wyn in Reading. When the second world war started, bill joined the parachute regiment and was training in Jermyns lane under canvas when he met his future wife, Betty Old. They were married in 1940

During the war Bill served in the North Africa desert, Italy and France and was attached to operation "garden market" at Arnhem in an attempt to take the bridge over the Rhine.

After the war Bill and his wife worked in service at Pangbourne for many years before returning to Braishfield Manor as chauffeur and cook.

They then moved on to work for

the Lowmans in church lane and resided at meadow cottage in Newport Lane.

Sadly Betty died in 1977 but Bill carried on working until his retirement and later doing odd jobs for Mr and Mrs Wilkinson.

In June 1992 the Para's celebrated their golden Jubilee at Aldershot. Bill was determined to attend and did so to receive the salute from the Prince of Wales.

Bill then moved to the bungalow in Hill View road until illness forced him into hospital in 2007. After a three month stay, he moved to Durban House Nursing home where he spent his final years in very happy surroundings until his death

Down to Earth Garden Machinery Romsey



Your Local Specialist

with over 35 years experience

- ☛ Servicing & Mobile Repairs
 - ☛ New and used Machine sales
 - ☛ Spare Parts
 - ☛ Oils & Batteries
 - ☛ Hand Tools Sharpened
- Contact Les on: 07771874471
- Or leave a message or fax on: 01794 830553

E-mail: down2.earth@virgin.net

An exciting new wedding venue

(until now, this was the best kept secret!)



Superb Food Attentive Staff
Magical Location Affordable Prices

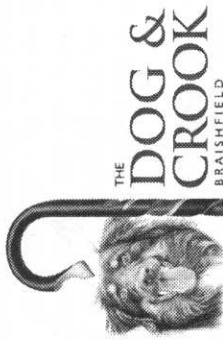
Norman Court School

West Tytherley, Nr Salisbury

www.normancourt.co.uk Tel: 01980 862345
enterprises@normancourt.org mobile: 07899 938 667

The Dog & Crook At Braishfield

Crook Hill, Romsey 01794 368530
www.dogandcrook.com



Traditional Home Cooked Food Served Daily
Lunchtime & Evening Specials—Monday to Friday
12-2pm 2 Courses £6-95— 3 Courses £9-50
5-30—9pm 2 course set menu £9-95

Selection of Real Ales
Families Welcome

Evening Meals Served Monday to Saturday 5.30 - 9pm
Sunday Lunches served 12-3pm

Braishfield School News

The Wizard Of Oz: The pupils pull it out of bag at Braishfield Village Hall!

On Wednesday 9th of December 2009, the children at Braishfield Primary School put on a fantastic show of The Wizard of Oz.

The characters were all very nervous before the show but when it came around, they all looked like professionals, even though they hadn't had much experience. When Dorothy melted the Wicked Witch of the West everybody cheered and clapped.

The make-up was brilliant and so was the scenery. Also I have to mention the special effects which were incredible. The dry ice machine gave the hall a foul smell but it paid off because it was very scary in the wizard's scene.

Overall the pupils gave it their very best and it ended up being a brilliant show. Personally I would rate it 10 out of 10. A show definitely worth seeing.

By Matthew Jocelyn (Year 6)

The blustering, hyper-coward of a lion in search of courage, the appealing Tin Man, whose dancing abilities are restricted by his body armour, and the melancholy Scarecrow become good human companions to Dorothy. And The Wicked Witch of the West, all got-up in

traditional black, greenish face and pointy hat, emanated a genuinely chilling evil.

The familiar songs from Over The Rainbow to We're Off To See The Wizard were transmitted with real passion.

The munchkin scene was amazing (and amusing!) The houses were great, so were Boq and Zoq, and the fat mayor!

By Samuel Kemp and Daniel Windbank (Year 5)



SNOW

A report on this week's weather by India Farmbrough in Year 3

People were so amazed when they woke up this morning to see the snow had fallen so heavily and turned the world white. In the fields you could hardly see the sheep.

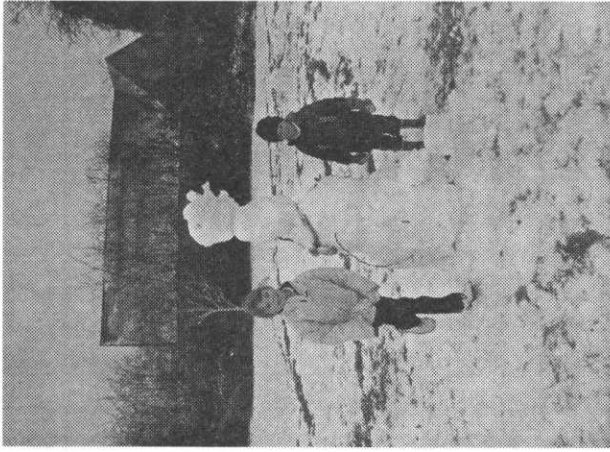
The ice crystals create stunning ice patterns on windows and car windows. The ice patterns are so beau-

tiful they could be painted by hand.

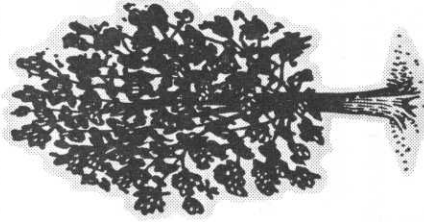
Lots of people have been playing on their sledges. They also have been making giant snowmen. Sometimes people make small igloos that can fit one or two people in.

The temperature is below freezing and lots of people have been complaining about the cold.

The snow can sometimes turn into ice which can turn into black ice. Remember even though the snow makes things pretty it can make things dangerous so don't forget to drive carefully. You could walk instead or to make things really fun you could sledge.



Remember the BVA Website www.braishfield.org



BRAISHFIELD **T**REE **S**URGEONS
Specialist tree surgery
and advice

Tree surveys carried out
Professional service in all areas
25 Years Experience
**LOGS . WOOCHIP.
HEDGE CUTTING**

Contact Ian Knight on
01794 368794 or 07500 968373

Email katel.knight@googlemail.com

FUN PAGE

Once again, The Washington Post has published the winning submissions to its yearly neologism contest, in which readers are asked to supply alternative meanings for common words.

The winners are:
Coffee (n.), the person upon whom one coughs.
Flabbergasted (adj.), appalled over how much weight you have gained.
Abdicate (v.), to give up all hope of ever having a flat stomach.
Esplanade (v.), to attempt an explanation while drunk.
Willy-nilly (adj.), impotent.
Negligent (adj.), describes a condition in which you absentmindedly answer the door in your nightgown.
Lymph (v.), to walk with a lisp.
Gargoyle (n), olive-flavoured mouthwash.
Flatulence (n.) emergency vehicle that picks you up after you are run over by a steamroller.
Balderdash (n.), a rapidly receding hairline.
Testicle (n.), a humorous question on an exam.
Rectitude (n.), the formal, dignified bearing adopted by proctologists.

Pokemon (n), a Rastafarian proctologist.
Oyster (n.), a person who sprinkles his conversation with Yiddishisms.
Frisbeetarianism (n.), (back by popular demand): The belief that, when you die, your soul flies up onto the roof and gets stuck there.
Circumvent (n.), an opening in the front of boxer shorts worn by Jewish men.

The Washington Post's Style Invitational also asked readers to take any word from the dictionary, alter it by adding, subtracting, or changing one letter, and supply a new definition. Here are this year's winners:

Bozone (n.): The substance surrounding stupid people that stops bright ideas from penetrating. The bozone layer, unfortunately, shows little sign of breaking down in the near future.
Foreploy (v): Any misrepresentation about yourself for the purpose of getting laid.
Cashtration (n.): The act of buying a house, which renders the subject financially impotent for an indefinite period.
Giraffiti (n): Vandalism spray-painted very, very high.

Sarcasm (n): The gulf between the author of sarcastic wit and the person who doesn't get it.
Inoculate (v): To take coffee intravenously when you are running late.

Hipatitis (n): Terminal coolness.
Osteopornosis (n): A degenerate disease. (This one got extra credit.)

Karmageddon (n): its like, when everybody is sending off all these really bad vibes, right? And then, like, the Earth explodes and it's like, a serious bumper.

Decafalon (n.): The grueling event of getting through the day consuming only things that are good for you.

Glibido (v): All talk and no action.
Dopeler effect (n): The tendency of stupid ideas to seem smarter when they come at you rapidly.
Arachnoleptic fit (n.): The frantic dance performed just after you've accidentally walked through a spider web.

Beelzebug (n.): Satan in the form of a mosquito that gets into your bedroom at three in the morning and cannot be cast out.
Caterpallor (n.): The color you turn after finding half a grub in the fruit you're eating.

And the pick of the literature:
Ignoramus (n): A person who's both stupid and an a*****e.

TAXI

Can You Get One When You Need One
07891 169549 / 01794 342322

Romsey District Cars

Unique Text Service

Credit and Debit Cards Accepted

Long Distance - Airports (discounts available)

4 and 6 Seat Vehicles

Competitive Fares to any Area

<http://www.romseydistrictcars.co.uk>

Extension to All Saints Churchyard

If you have visited the church yard in recent months you may have noticed that we have removed a section of the hedge on the south side, between the churchyard and the small field purchased some years ago by the PCC. The hedge removal is in preparation for incorporating this area within the churchyard in the fullness of time.

So far planning consent for change of use has been sought and obtained from TVBC and we are in the process of fulfilling the necessary church legal procedures, which include transferring the ownership of the small field from the PCC to the Rector in his corporate capacity. When all the legalities have been completed, arrangements will be made for the Bishop of Winchester to come to consecrate the exten-

sion so that it is able to be used for burials. We are aiming to complete the legal processes by October this year.

We anticipate that the extension will be ready well before there is need to use it, as we have space for 15 to 20 more graves in the existing churchyard.

We would like to take this opportunity to acknowledge publicly the work of Richard Brazier and his team of grass cutters and those volunteers who assist by cutting hedges and doing other maintenance tasks, through all of whose efforts our village churchyard is maintained to a very high standard. We much appreciate the time that you give and all that you do.

Sarah Boothman
Secretary to the PCC

DURBAN HOUSE

Nursing Home

We provide care for the elderly in a friendly homely atmosphere with 24 hour Nursing Care
Please ring Matron on

01794 512332

Durban House Woodley Lane ROMSEY SO51 7JL

Property Maintenance & Handyman Services

Interior & Exterior Painting & Decorating
Wallpapering

Sheds & Fences Erected Painted & Re-felting
Grass Cutting, Hedge Cutting & Strimming

Floor & Wall Tiling

Flat Pack Assembly & Small Carpentry Work

Windows & Doors Repaired & Replaced

House & Garden Clearance

Fascia Boards & Gutters Cleaned, Repaired & Replaced

Driveways & Paths Repaired & Re-surfaced

Kitchens & Bathrooms Fitted

Ground Works & Drainage

Brick work & Re-pointing work

Collection & Delivery Service

Plus many other areas of maintenance work & odd jobs
carried out

Ben Kington

Telephone : 01794 368536

Mobile : 07866551725

Fully insured References available

Free Estimates

Braishfield Village Association Donations

At the AGM the committee did not call for subscriptions in view of the improved financial state of the Association. However, the News is now costing over 50p per copy and in order to safeguard free distribution, donations towards the printing costs would be much appreciated.

If you wish to make a donation please complete this slip and forward it to address below:-

BVA Treasurer
Sheila Still
Orchard View
Crook Hill
Braishfield
Romsey SO51 0QB

Tel: 01794 368384

Thank you.
David Robinson - Chairman

I enclose a donation of £ _____ towards the running costs of the BVA.

Name (please print)

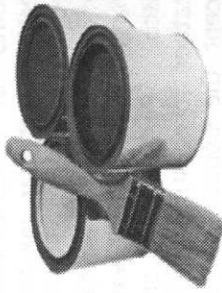
Address

Tel:-

As an alternative a Standing Order form to make annual donations to the work of the Braishfield Village Association in available, just call the Treasurer and she will send you one.

Martyn Dennis

Painter and Decorator



- Fully Qualified
- Interior and Exterior
- Over 10 years experience
- C.I.T.B. Registered

Tel:- 023 8026 9695 or 01794 501587

Moving to the country
or moving to

Savills
for all of your property needs



Savills Winchester
Jewry Chambers
Jewry Street
Winchester SO23 9RW
01962 841842
winchester@savills.com

David Pardoe
T: 01962 834061
M: 07967 555046

savills

www.savills.co.uk

Braishfield Horticultural Society

One can surely be forgiven for once again mentioning our favourite subject after the events of recent times, the weather. Last year, our boys at the Met Office predicted a barbeque summer followed by a mild winter. What happened? 2007 was another fiasco. Perhaps the answer to weather forecasting would be to accept the opposite to that produced by their high tech equipment.

Sadly, our Society has lost yet another valued member and friend with the passing of Sue Kemp. She was always a staunch supporter of the Society and loved all things to do with the annual Flower Shows. Sue, who bore her illness with much courage, will be missed and long remembered by her many friends.

Our January meeting with Peter Barwick was cancelled as a result of weather conditions. Apart from the uncertain conditions around Braishfield, Peter's travel situation was far worse. We will, no doubt, call upon his services on another occasion. Meanwhile, do remember that on February 9th, Steve Renwise will present his talk on his recent travels in South America. Don't miss it.

On March 9th, a Southampton photographer, Phil Green, will present his talk, Favourite Places, Favour-

ite Things with all year round studies of nature subjects. He will be followed on April 13th by Roger Parsons with the World of Sweet Peas as his offering. April, of course brings us once again to the Spring Show which, we anticipate, will be judged by Roger. The Schedule this time will be as follows. 1) 9 blooms of cut daffodils, no less than 3 different cultivars. 2) 5 Pansies in a container. 3) 5 stems of flowers other than daffodils or shrubs. 4) 1 stem of flowering shrub or tree. 5) A flower arrangement in an egg cup.

It was in December last that I reported the fact that we were now included in the Hampshire Federation of Horticultural Societies Website. Resulting from our participation, I have now received information on another website which may be of interest to our members. It is known as "Gardeners Click" It was launched in 2008 and is, I quote, the award winning community website dedicated to everyone with a passion for gardening and horticulture. It won the Digital Award for best website at the Garden Media Guild Awards 2008 beating stiff competition from both the RHS and the BBC Gardening Website.

The service is free to use and can be found on www.gardenersclick.com

That concludes all that there is to report this time, but let us end

with a chuckle. It is said that laughter will extend your lifespan. Friday in our household is a day when reveille is always at 7.00am. During the night I awoke and heard a voice, or so I thought, saying, it is almost time. As always, I reached out and pressed the button on the radio, which immediately burst into life. A voice called out, "what on earth are you doing"? As usual my

love, putting the radio on to make sure we don't nod off again I replied. Her Indoors came back with, "it's only five minutes past two, what are you thinking of"? Ah!!!! You know, it's quite chilly in the doghouse at this time of the year. Be nice to each other.

Bob Thomson
BHS Secretary & Scribe.

3rd Romsey Scout Group

*Invite you to their
OAP Spring Party*



*At The Jubilee Hall Timsbury
On Thursday 11th March 2010*

From 7:15pm – 8:30pm

*Light refreshments, raffle and
entertainment by the scouts*

RSVP Sarah on 023 80 814295

(please leave a message!)

*Friends very welcome
local transport available*

2010 All Saints Mowers

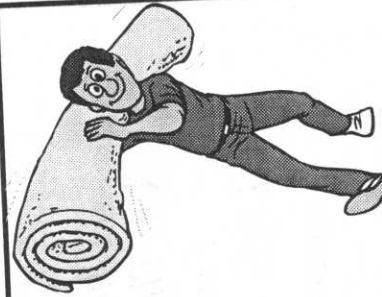
A meeting is arranged for
FRIDAY 19 March at 7.00 pm in the
LOUNGE BAR OF THE NEWPORT INN

All existing mowers are invited to attend and anyone wishing to
join our
happy team is most welcome too.

We are also looking for someone to take on the adhoc maintenance
of the
machines during the season.

Looking forward to seeing you all on the 19th.

Richard Brazier
All Saints Church Co-ordinator
Tel: 368414
rdbrazier@hotmail.com



Graham Parrick Carpet Fitting

All types of carpet supplied
and fitted. Free Quotations

Tel:- 01794 323173
07831 858615



NORMAN COURT
PREPARATORY SCHOOL

Co-educational Day and Boarding School for children aged 3 to 13

"An outstanding ethos for learning"

Source : ISI Inspection report

Daily minibuses from Romsey available

West Tytherley, Salisbury, SP5 1NH
Tel: 01980 862345

www.normancourt.co.uk

Seasoned Hardwood Logs



Locally grown Timber
cut and split to your requirements

Tel:- 01794 368513

Braishfield Parish Council Notes

This report on the Parish Council covers the Council's meetings held on 1st December 2009 and 5th January 2010.

A minute's silence was observed at the December meeting in memory of Andrew Lalonde who died on 4th November, having been a Member, Clerk and Chairman of the Council over many years. Consequently there is now a vacancy on the Council and since the villagers have not exercised their right to hold an election the Council will be filling it by co-option. A notice was posted on the board about this. There is now a notice on the board for the vacancy and anyone interested is asked to notify Mike Prince, Chairman of the Council.

The original playground which was installed during Andrew Lalonde's time as Clerk to the Council in the 1970s has now been replaced at a cost of £40,000 + VAT. This was opened by Father Christmas during the School Christmas fete on 28th November. The £40,000 was covered by grants from Test Valley Borough Council (£10,000), Viridor Waste Management (£10,000) and SITA Waste Management (£20,000). The grants from the waste management companies do of course come from the Landfill Tax.

The VAT element (£6,000) is covered by the fact that the Parish Council is able to recover VAT directly from HM Revenue & Customs, though the Council has had to find the money first and re-claim later after payment. However, this £6000 VAT reclaim was obviously too much of a shock for the normal VAT office (in Southend) to deal with, as the claim has been escalated to 'Head Office' in London. Your Parish Clerk has had to provide a copy of the invoice and make various statements saying that the claim adheres to the rules. Normally VAT reclaims are paid with no questions asked. For those not in the know, the Council's ability to reclaim VAT is based on the principle that a tax should not be paid using money raised by taxation.

BT has been trying to get local Council's to 'adopt' their red telephone boxes for £1, but the boxes have to stay in place so you cannot then go and sell it on ebay at a profit. The Council rejected BT's suggestion for the adoption of the one in Braishfield and BT has responded by saying that it will be kept open for the time being. Its future is clearly unclear, if you see what I mean.

A couple of complaints have been made about horses in the village. Firstly, horses are being ridden on

a public right of way. This would require the permission of the landowner and the Council has asked the Hampshire County Council rights of way people to find out. Secondly, a volunteer has very kindly cleared up the mess left by horses on the footway near to the School, so that children do not have to negotiate it.

Trees along the Common Hill Road side of the Recreation Ground have been given a prune where they have been overhanging the footway and also over the School gas tanks. The trees/hedging alongside the playground has also been cut back. Still on trees, there has been some significant pruning of the tree at the pond which has been overhanging the seats. Unfortunately trees do not help the condition of seats placed under them which is one reason for the action taken by the Council. There is a possibility of another seat being donated to the village at the pond and discussions are taking place about this.

The December meeting decided to set the precept for 2010/11 at £10,000 which is unchanged for the past two years. The precept is the amount which the Parish Council receives from Test Valley Borough Council which adds it to the Council Tax bill you receive. It works out at about £29 for a Band D property in Braishfield and depends on the number of occupied properties in the Parish and

the distribution of properties in the various Council Tax bands. The fact that each Parish Council has a different precept accounts for the slight difference in overall Council tax bills between Parishes. Some information on the Braishfield Council tax is available at <http://www.braishfield.org.uk/brcounciltax.pdf>

In January the Council had a visit from the Police, not because it has done anything wrong, but because there are some new Officers in the area. A presentation was given by Sgt Christine Plascott of the Romsey Police Safer Neighbourhood Team and she was accompanied by our new beat Officer PC Vernon Gook together with rural PCSO Jo Cole. A PCSO is a Police Community Support Officer. They are setting up consultation groups involving groups of Parishes.

Highway maintenance is an ongoing problem and the recent weather has not helped. Apparently there was an incident along Kings Somborne Road in which several cars sustained damage from a pothole with both the Police and Hampshire County Council having to attend. There are a number of other potholes appearing round the village. These can be reported to Hampshire County Council or indeed to the Parish Council.

BRAISHFIELD PARISH COUNCIL

PARISH COUNCIL VACANCY

Following the death of Andrew Lalonde, a Parish Council vacancy is to be filled by co-option.

Braishfield residents interested in serving on the Parish Council should notify -

the Council's Chairman, Mike Prince, Yew Tree Cottage, Church Lane, Braishfield SO51 0QH

by Friday 26th February 2010

The Parish Council proposes to consider the appointment at its meeting scheduled for Tuesday 2nd March 2010.

John Rhodes
Clerk

The TVBC and HCC Planning Authorities dealt with applications as follows:

	South View, Braishfield Road	Single storey extensions	Permission
09/01948/ FULLS			
09/01745/ FULLS	Baileys Down Farm, Parnholt Lane	2-storey extension	Permission
09/02172/ FULLS	Leith Howe, Braishfield Road	Double garage	Refused
09/010205/ CMAS	Hunts Farm Quarry, Rudd Lane	Extension of time	Permission

The Council received very few planning applications but responded to TVBC as follows:

	Lionwood, Braishfield Road	Detached garage	Objection
09/02386/ FULLS			
HCC/2009/ /0365	RF Salvidge, Bunny Lane	Remove requirement for bund	Objection
09/02656/ CMAS	RF Salvidge, Bunny Lane	Create skip park	No objection
09/02571/ FULLS	2, The Square	Rebuild kitchen extension etc	No objection
09/02606/ TREES	Springbank and Newport House, Newport Lane	Tree work	No objection

For information on planning applications in Braishfield and for copies of Parish Council Minutes etc, you can find these on www.braishfield.org.uk