

## Braishfield Village Diary

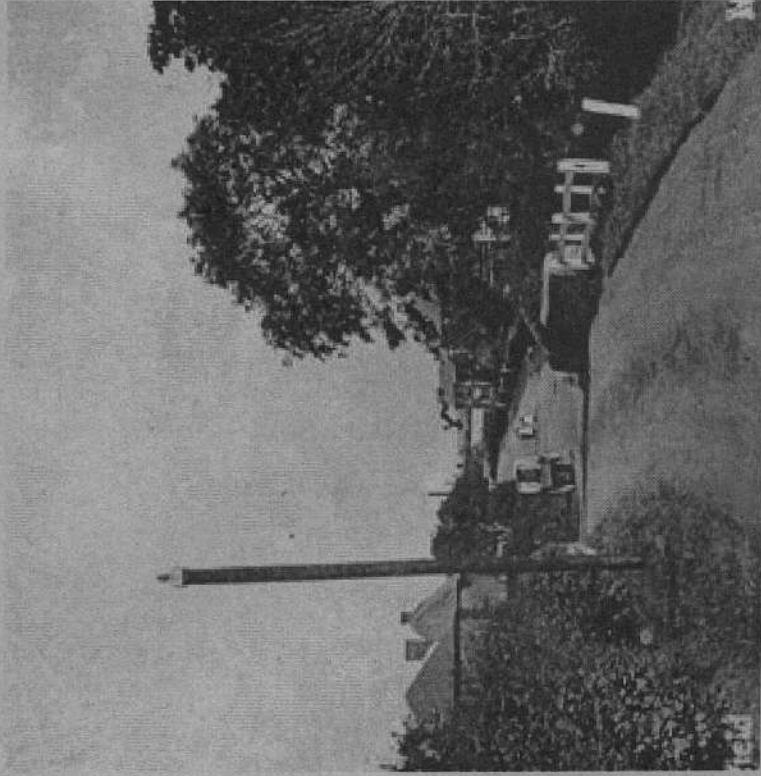
June	
12 Mon	12.00 Noon Lunch Club in The Church Room
13 Tue	7.30 pm Horticultural Society
14 Wed	11.00 am Police presence
27 Tue	7.30pm Braishfield Annual Parish Council
July	
10 Mon	12.00 Noon Lunch Club in The Church Room
11 Tue	7.30 pm Horticultural Society
12 Wed	11.00 am Police presence
15 Sat	2.00 Braishfield Horticultural Society Flower Show
25 Tue	7.00 pm Braishfield Parish Council

All functions take place in the Village Hall unless otherwise stated.  
Please send details to the Editor if you would like dates of forthcoming events published.

# BRAISHFIELD

## Village Association NEWS

Issue 157 June 2006



1907 Picture of Crook Bridge from Crook Hill

Distributed free of charge by the Braishfield Village Association to the residents of Braishfield and the surrounding hamlets

## Braishfield Village Association

### Committee 2004-2005

Chairman	-	George Elliott	368306
Secretary	-	Rosie Groves	368178
Treasurer	-	Sheila Still	368384
BVA News Editor	-	Mike Stevens	367801
News Distributor	-	Ros Chaplin	368483
Committee	-	David Protheroe	367003
		Graham Bennett	368109
		Margery Randall	367738

### Editors Notes

This magazine is produced by the Braishfield Village Association and the Editor reserves the right to elaborate, withhold or abridge material as space permits. The views expressed in this Magazine are not necessarily those of the Editor or of the Braishfield Village Association. Any form of reproducing or copying of this publication requires the prior written permission of the Editor. © Braishfield Village Association 2006

Written items for the 'News' should be sent to:-

The BVA Editor  
Kendal  
Crook Hill  
Braishfield

Romsey SO51 0QB by the date shown below.

Copy may be hand written, typed or on floppy disk but, ideally, by e-mail to [news@mikopy.com](mailto:news@mikopy.com)

All items for publication must show the name, address and telephone number of the originator. Letters to the Editor should be on topics relevant to the villagers of Braishfield. The BVA attempts to deliver a copy of the Braishfield Residents Guide and the Village Design Statement to all new residents. If you have not received these publications please contact the News Distributor, Ros Chaplin on 368483

Latest Copy date for the next issue is  
Monday 15th July 2006

## From the Chairman

We all derive joy from this time of year, as the earth slowly awakens from winter. Our winter this year has certainly taken its time. For myself, older than many, age seems to make what they call a 'chilly' day seem downright artic. However, despite being three weeks late the miracle of spring has not failed us.

In the April issue of the News it was good to see the Village Cricket Club list of fixtures for the coming season - truly the beginning of an English summer. I do hope some of you will take up the challenge and try your hand as encouraged by Mike Ransom. Matches are mostly Sunday cricket with a few evening games arranged. Whatever your performance on the day you will be able to enjoy the smell of freshly cut grass and foaming bitter afterwards! Mike can be contacted on 368415 for sound advice.

On 30 April we said goodbye to Revd Sally Heather, who left the benefice after eight years, having completed her four year curacy. Her work has been greatly appreciated. We have enjoyed her friendship and support, and wish her a happy holiday with Ken in Colorado, before venturing to Uganda with a group from the Winchester Deanery to work in schools and churches. The southern Ugandans are the

happiest of people and will make Sally very welcome. However, her commitment will undoubtedly be tested and we wish her strength to meet the challenge ahead.

You will be aware of the proposal by BKP to establish a research and development gasification unit in Bunny Lane. The Parish Council and BVA Committee have reviewed the application and have objected to Hampshire County Council. There are a number of queries which need to be answered. We await developments and will keep you informed.

The annual Farley Chamberlayne sponsored walk, once again very well supported, takes place from 27 May to 4 June. Off at dawn, by bus to Lichfield before stepping out through Cannock Chase, across the Derbyshire dales into South Yorkshire. The final night is to be spent at Ripon, in comfort, with a memorable dinner and a chance to attend Choral Eucharist in the Cathedral on Sunday 4 June before heading home - perhaps with the boast 'no blisters'! We wish the 'happy band' a wonderful week.

We all look forward to a warm May and June wherever we are, but without suffering a drought, as has been forecast by the prophetic. A hose ban would spoil it all!

George Elliott  
Chairman



## Your Letters

### BKP Planning Application (TVS 06/01131/CMAS) for Provision of a Research & Development Gasification Unit at Casbrook Park, Bunny Lane, Timsbury, Romsey

Following a large number of objections including both Braishfield and Michelmersh Parish Councils, the Braishfield Village Association, local residents and other interested parties, BKP withdrew their application on 15 May in an email to Julia Davey (Case Officer at HCC). It read as follows:

"We are confirming the withdrawal of the planning application for the proposed gasification unit at Casbrook Park, Timsbury as we feel we need to supply more technical information to eradicate fears from the public.

Once we have all the technical information we will submit the application for the 19th July meeting.

Should there be any other questions or queries please do not hesitate to contact me and we can then gather all the information and submit all the details in one hit.

Kind regards Signed Rachel Jackson (BKP)

## Your Letters

### The Proposed shop

About 4 years ago, following on from the successful Village Design Statement, the Parish Council asked a group of villagers to look into the possibility of reopening a shop. A survey was conducted and, of 300 houses contacted, 200 returned their questionnaires. These represented 400 people; 99% of all contacted pledged their support for the project. The shop committee tried for over 3 years to find a suitable site, the old garage site and the village hall were considered, but various covenants placed on the village hall car parking made this impossible. As stated in the March edition of this magazine the question was once more raised in public. The Parish council meeting last month was more crowded than any that I can remember! Jeremy Muslewhite's proposal to build on the site of the old exchange was warmly welcomed by most present. Clearly much of the devil will be in the detail. Jem. is more than happy to take on board any criticism and deal as sensitively as possible with any issues which might cause concern. It seems likely that planning permission will be asked for within weeks. Please, when the notice goes up on the old exchange, letters of support would greatly help his case; the more the better.

Tony Chant

Chairman Shop Committee

**MiKopy** Ltd for Anything in the Office With a Plug On

**New For 2006**  
**Colour Copying**

**A3 and A4**

**Double Siding**

**Booklet Making**

**Drop in or mail to us**

**Competitive Pricing**

**Tel: 01794 511114**

**E-mail [mike@mikopy.com](mailto:mike@mikopy.com) Fax 01794 511116**

**Unit 25 Abbey Enterprise Centre, Premier Way, Romsey. SO51 9DF**

### Braishfield Summer Fayre July 8<sup>th</sup> 2006 - an event for all the family.

Following last years record breaking event the Braishfield School Association are hard at work aiming for an even bigger and better event this year. Having put the show back a month to avoid taking too many viewers away from the World Cup (!) the 8<sup>th</sup> of July is now shaping up as a fun packed day with a string of attractions to suit all tastes and ages.

Features so far listed include a spectacular 'Birds of Prey Flying Display', the sounds of an 'African Djemba Drum Workshop', the groans and grunts of a 'Tug of War' competition and the return of good old 'Punch & Judy'.

After an 'un-Bear-able' season 'Supper and Sammy Saint' consider a visit essential in order to lift their spirits and they will be looking for lots of hugs and kisses from the Children during the afternoon.

Another highlight is the School Children's 'Country dance display' featuring for the first time, live accompaniment by the 'Woodfidley Folk Group' of Winchester, who return after such popular acclaim last year.

The Woodfidley's continue to entertain throughout the afternoon with

## Your Letters

their delightful tunes of Welsh, Cornish, Manx, Scottish, English, Playford and Medieval origins.

The main arena, in addition to the on-going battles of the 'Tug of War' competition, will see the ever popular 'Children's fun races' and this year - a 'Fun Dog Show'.

Yes, if you have a handsome dog, a pretty bitch or one with a tail that waggles or revolves like a flymo - it could just be your lucky day. A 'Handler' class for Children is also featured and so don't delay, start practising today.

The arena will be surrounded by some 40 stalls and sideshows offering a variety of shopping and entertainments and at anytime should you feel in need of sustenance, our renown BBQ, Bar, Tea and Cake crew will be as keen as ever to satisfy everyone's needs.

Pony rides, a Steam Engine, Fire Engine and Vintage Vehicle's will add yet more to the fine ambience of one of the best country fayres in the district.

Our goal, in this month of football, is to raise funds to further benefit our cherished Primary School and with your valued support we know this can be achieved.

We look forward to seeing you on Saturday July 8<sup>th</sup> from 12:30pm.

Thank you,  
Martin Weeks  
Chairman  
Braishfield School Association

### VISIT TO SOUTHAMPTON ART GALLERY

Southampton Art Gallery has a fine collection of paintings. Tim Craven, the curator of the gallery, who lives in Braishfield, has kindly agreed to take a group around the gallery.

Date: Wednesday, 12<sup>th</sup> July, 2006

Time: 11 a.m. to 12 p.m.

Numbers are restricted to 20 and tickets cost £10.00.  
(Optional lunch can be arranged afterwards at The Wheatsheaf)

Please contact Juliet Edwards on 368465

All proceeds towards Braishfield Church and Community Building Fund.

## Your Letters

### Hospital Travel Problems

Annie Tomlinson  
Transport Planner  
Planning Policy, Design & Conservation  
Planning Service  
Test Valley Borough Council  
Duttons Road, Romsey  
Hampshire SO51 8XG

Winchester & Eastleigh Healthcare NHS Trust, Test Valley Borough Council and Hampshire County Council are aware that some patients within the Borough are currently experiencing difficulties in getting to Winchester hospital. As a consequence they are working jointly to understand these difficulties and what improvements are required to make patient and visitor access easier.

In order to understand the scale and issues surrounding patient and visitor travel the group is commissioning a survey of those patients travelling to Winchester hospital from Test Valley. It is hoped that with the community assistance the group will gain a better understanding of how to improve access to Winchester hospital for all.

So if you receive a questionnaire with your hospital appointment, please take the time to complete and return it.

The results will be published on the following websites from September 2006.

[www.testvalley](http://www.testvalley)

<http://www.wehct.nhs.uk>

[www.hants.gov.uk](http://www.hants.gov.uk)

For any further information please contact [planning@testvalley.gov.uk](mailto:planning@testvalley.gov.uk) or call 01794 527811.

## From the Editor's Desktop



### Braishfield's Own Website

The BVA is discussing the set up of a website dedicated to Braishfield and the surrounding hamlets. We are looking for ideas for possible input and layout of the site. What information would you want to see on the site

A few ideas are:

Things to see and do, Eat out in Braishfield  
Favourite local walks, News  
Residents Guide, History Script and Pictures  
Local Businesses, Annual or special events

If the site goes ahead, we will also be looking for a volunteer to run and update the site on a regular basis. Assistance will be given to whoever wants to take on this small task by the editor.

Please forward your ideas or your willingness to help with this new venture.

Contact

Mike Stevens

Editor

367 801 news@mikopy.com

### **Bin Collections**

Bins are emptied in Braishfield on Wednesdays. If a bank holiday falls on a Monday, The bins are generally emptied on a Thursday.

Recycle Bins are Emptied Fortnightly.

Dates for Recycle Bins

Thurs 1st June after bank holiday

14th & 28th June

12th & 26th July

## MARK. A. HUMPHERSON CABINET MAKER

*Design—Manufacture—Installation*

*Specialising in Kitchens, Bedrooms, Bathrooms  
Handmade furniture of the finest quality  
for fitted interiors.*

*Workshop at Hawkes Farm, Dores Lane*

**Tel:- 023 8044 6846 Mobile:- 07970 185778**

## WELLOW

Fitness Centre

*Quality Health and Fitness!*

Enjoy a gym room all to yourself  
Intimate nature of a small Centre  
Experienced, friendly, understanding staff

Family packages available

Term Time Tai Chi Classes

Over 50's Tai Chi 45 min daytime Classes no booking  
required

Yoga, Circuit Training, Boxercise  
And Junior Fitness Classes

**Tel: 01794 323322**

Email: [info@wellowfitness.com](mailto:info@wellowfitness.com) Web: [www.wellowfitness.com](http://www.wellowfitness.com)  
Ryedown Lane, East Wellow, Romsey. SO51 6BD



## Where are the sheep at Elm Grove?

Despite saying a few months ago that lambs would be appearing at the beginning of May, you will probably have noticed we have had none. Last year's lambs had a problem with worms, something that Kate the shepherd does not want to happen again. These worms are minute, the eggs living on the grass that the sheep graze on, the eggs hatching inside the sheep, the adult worms produce eggs that get excreted onto the grass and the cycle starts again. Lambs especially cannot thrive if they have the worms inside them and some become very poorly and die. 16 were lost in this way last year, so a solution to the problem has to be found. In mixed farms where rotation of crops and livestock takes place the worms do not survive as different livestock 'support' different types of worm and when crops are put on the land then of course the worms have no 'host' to live on. In years past, Elm Grove was a mixed farm, but it is smaller now and times have changed.

The lambs which became poorly had been put into the field next to the allotments when they were separated from their mothers. This field had not been cut for hay and it is thought that the combination of the lush grass and the stress of separation from their

mothers caused the problems. Adult sheep have learned to resist the worms and are therefore less affected.

Chemical worming treatments are becoming less effective. Many worms are resistant to two out of the three available wormers. Investigation on the internet shows that this is a very widespread phenomenon and advice is given from all over the world. Various ideas have been considered by Kate and her family: homeopathy, changing the breed, to planting the fields with a turnip crop that the sheep would eat over the winter and therefore breaking the cycle.

Most of the suggested solutions proved to be not right in one way or another, so it has been decided to rest the land for a season and to cut the fields for hay. It is suggested that this will be as effective as anything else. Kate took the ewes to fields near Basingstoke in April and she has had a successful lambing period there. This week should see the last of the lambs being born. Meanwhile we are taking the opportunity to have a bit of a clear up, repairing fencing and preparing for some hedging next winter. The old hay in the Dutch barn has to be cleared away ready for the new hay that will be produced in a few weeks time (apologies for the

smoke - it won't go on for ever) and the corrugated iron cow pen has had a clear out and tidy up.

We hope the ewes will be brought back after weaning, which will be in late September. Kate gets married in October, to Ian Knight (who is a tree surgeon and fencer among other things) and she hopes to increase her flock, so we do hope that in the next year or

so the measures taken to lessen the worm problem are shown to have been effective. We have really missed the lambs this year, but it is nice to see the two poorly boy lambs from last year still here recovering and keeping Polly Lalonde's pet sheep Ollie company in the Orchard field.

Peter and Wendy Quarendon

## Well Done Braishfield School

The Headteacher  
Braishfield Primary School  
Braishfield  
Hampshire SO51 0QF

Dear *Caroline*

5 April 2006

I was pleased to learn that your Attached Inspector has recently agreed with you that your school provides a good education. It has not gone unnoticed that in each of the past five years Braishfield Primary School has been categorised as providing at least a good, and in some years, an outstanding quality of education for all of its pupils. It is not easy to achieve this consistently over such a long period of time with all the changes that have taken place.

Will you please convey my thanks and admiration on behalf of Hampshire County Council to all staff and governors who have contributed to this prolonged success through their hard work, dedication and professionalism.

I am copying this letter to the County Councillor for the area in which the school sits so that they are aware of the high regard in which we hold the school.

Yours sincerely

Gerry Price Strategic School Improvement Manager

# DOGS

## DOGS OWN GROOMING SERVICE

*Professional All-Breed Grooming*



*Expert service by fully trained & experienced groomers in a friendly, caring environment*

Church Walk  
Farley Lane  
Braishfield  
Romsey

Appointments & further information - please call:

Office 01794 369110  
Prue 07720 054518  
Penny Clare 07811 005825

## Dead-Heading in the garden

**N**ow gardens are finally blooming after the long winter, gardeners around the New Forest may be turning their thoughts towards the annual task of dead-heading, but none quite so enthusiastically as some members of the New Forest Guild of Weavers, Spinners and Dyers. Instead of ending up on the compost heap, their flower heads will be spread out to dry and used to dye wool the most beautiful shades.

In Kitchens, strange bubbling mixtures will be found, and visiting friends warned not to worry, it's not soup on the menu. The fascinating thing about dye-

ing with plant materials is the uncertainty of the final colour, daffodils will be yellow, but one never knows whether this will be pale and subtle, or stronger with a touch of orange. What ever the outcome, the colours produced from natural dye will blend together all ready for the next task - weaving, knitting or maybe crochet.

If you are interested in any of these skills, please contact The New Forest Guild of Weavers, Spinners and Dyers. Secretary Linda Window 01725 514468 Or see our stand at The New Forest Show, July 25<sup>th</sup>, 26<sup>th</sup>, and 27<sup>th</sup>.

## DURBAN HOUSE

Nursing Home

We provide care for the elderly in a friendly homely atmosphere with 24 hour Nursing Care

Please ring Matron on

**01794 512332**

Durban House Woodley Lane ROMSEY SO51 7JL

## Braishfield School Association

### British Red Cross - Dance for Life

As part of Red Cross Week, (7<sup>th</sup> to 13<sup>th</sup> May) The North Hampshire heat of 'Dance for Life' was held in Winchester on 29<sup>th</sup> April and won by a group of twenty-five junior children from Braishfield Primary School.

This competition has brought together youngsters throughout Hampshire to express the International Red Cross and Red Crescent movement through the power of dance.

The children collected money at the event and held a sponsored silence in school which raised a total of £225.60, which will be used to provide humanitarian aid overseas as well as helping people here at home.

Groups of dancers had been invited to choreograph innovative routines to express cultural diver-

sity and experience and the winners of county heats will perform again on 17<sup>th</sup> June for the Red Cross National Director of fund raising.

Braishfield's dance was developed after their class teacher asked children to research India for a new project. Mrs Donna Smith, who teaches all the PE, Games and Dance throughout the school, worked with the children's ideas to develop the final costumed sequences.

For their routine the Braishfield dancers dive into the Internet and discover from the Indian Flower of Knowledge that the cultures are not dissimilar and share ideas through dance.

Winning the heat last Saturday meant that the school received a trophy and certificates and the children are now looking forward to the final stage of the competition in June.



# TS

## Trevor Smith Plumbing and Heating

- Your Local Plumber
- Oil Boiler Servicing
- Oil Boiler Repairs
- Oil Boiler Installation and boiler changes
- Approved by the majority of Boiler manufacturers
- OFTEC approved

Tel:- 01794 368091  
Mobile:- 07801 661497

Los Pinares  
Sandy Lane  
Belbins  
Romsey SO51 0PD

# Seasoned Hardwood Logs



Locally grown Timber  
cut and split to your requirements

Tel:- 01794 368513



**Braishfield  
Horticultural Society**

**Flower Show**

**Saturday 15<sup>th</sup> July**

**Braishfield Village Hall  
& Recreation Ground  
Opening 2.00p.m.**

*The*

**Shimmering Shakers Belly Dancers  
Music Provided By "Mayhem"**

**Refreshments in the Hall  
Various Side Shows & Stalls  
Plant Sales & Draw**

*Ice cream*

**Entrance to Hall 50p -- School  
Children Free**

**Presentation of Awards at 4.00p.m.**

**STICKLEY PAVING & LANDSCAPES**

Family run Business for 35 years

All aspects of Landscaping  
from Design to Completion

We manufacture our own  
range of Paving Slabs

Free Consultation & Quotation

*Tel / Fax : 01794 368694*

*Mobile : 07770 452631*

- \* Patios
- \* Driveways
- \* Turfing
- \* Planting Schemes
- \* Low Maintenance Gardens
- \* Guaranteed Work



**Graham Parrick  
Carpet Fitting**

All types of carpet supplied  
and fitted. Free Quotations

**Tel:- 023 8025 4030  
07831 858615**



# Stanbridge

## Earls School

Romsey Hampshire SO51 0ZS

### The Dyslexia Specialists

## Open Day

Saturday 4th March 2006 -10am to 2pm

Tel: 01794 529400

[www.stanbridgeearls.co.uk](http://www.stanbridgeearls.co.uk)



## IVOR DUKE

### QUALITY PLASTER WORK

20 Years Experience

Trading Standards

Recommended

\*Free estimates \* reskim ceilings and walls  
\*coving \* dry lining archways \* plaster boarding

Call: (01794) 512979. Mobile: 07833 344141

## WestWood Turnery

Chris West

Woodturner



From replacement knobs to presents for someone special  
Tel: 01794 512718

Email: [chris@westwoodturnery.co.uk](mailto:chris@westwoodturnery.co.uk)

Website: [www.westwoodturnery.co.uk](http://www.westwoodturnery.co.uk)

## Down to Earth Services Romsey



Lester Smith

Garden Machinery Specialist

- Lawn Mower Specialist with over 30 years local experience
- Annual Servicing
- Running repairs/breakdowns
- Sharpening to include shears/hedgecutters etc.
- Repairs carried out in my workshop or at your home
- New and used garden machinery
- Free collection and delivery
- Free advice
- I come to you

Tel/Fax 01794 830553

mobile 07771 874471

# Savills - for all your property needs

Residential sales and lettings  
Farm and estate management

Farm agency  
Auctions  
Valuations  
Surveys

Savills Winchester  
Jewry Chambers  
Jewry Street  
Winchester SO23 8RW

Hume Jones  
Edward Cunningham  
01962 841842

savills

savills.co.uk



## JEM MUSSELWHITE ASSOCIATES

Architectural Design &  
Building Consultancy

Fellow Member of The Association of Building Engineers

Preparation & Submission of Residential & Commercial Planning &  
Building Regulation Applications to Local Authorities

Building Inspections & Surveys      Structural Surveys & Reports  
Structural & Thermal Calculations

Units 7-9 Pucknall Farm, Dores Lane, Braishfield, Romsey SO51 0QJ

Tel No: 01794 367776

Fax No: 01794 367775

[www.jem-musselwhite.co.uk](http://www.jem-musselwhite.co.uk)

[enquiries@jemmusselwhite.co.uk](mailto:enquiries@jemmusselwhite.co.uk)

## Braishfield Horticultural Society

Speaker. Always a very popular visitor, Andrew presented a very interesting and entertaining talk on his chosen theme, Shrubs Throughout the Year. His talk was supported, as usual, by some really brilliant photography. Andrew rounded off the evening by taking questions from the floor.

The next item on the agenda is of course the June garden visits, which this time includes one arranged for an afternoon.

The first is to Bramdean House, Bramdean on Tuesday 6<sup>th</sup> June at 2. 20pm.

The second is to The Clock House, Nr Sparsholt on Tuesday 13<sup>th</sup> June at 7. 30pm.

Lastly, Meon Orchard, Kingsmead, Nr. Wickham on Tuesday 20<sup>th</sup> June at 7. 30pm.

Printed details of how to find these venues can be obtained from either, myself or Jill Fahy.

Saturday 15<sup>th</sup> July is the day of our next Village Flower Show, which will without doubt, be another success in our calendar. Apart from the usual stalls, there will be music once again provided by the popular Folk Band, Mayhem. In the past we have been entertained by a team of Scottish Dancers but on this occasion there will be something quite different, a troupe of Belly Dancers. That should bring about an increase in the number of visitors. Maybe appetites will be

Spring has sprung, as the saying goes, albeit somewhat late. The lateness however, was not without some benefits. For the first time in years, the Magnolia Blossom stayed with us until the leaves put in an appearance and there is an abundance of all kinds of beautiful blossoms to be seen around.

In April we welcomed Rosie Hardy, of Hardy's Cottage Plants to our meeting for the second time. Rosie brought with her, a great many of the Spring Flowering Plants, on which she was going to base her talk. A very talented lady, who has gained many prizes in her chosen profession, she held our interest for about an hour as she dealt with each plant in turn. When the subject turned to "cutting back", I did become aware of a sharp intake of breath from around the room, she is a mean hand with a pair of secateurs. Rosie rounded off another good evening by judging the Spring Show, which, on this occasion was won by Sylvia Watts. Joint second were Sue Buxton and Penny Cosburn, followed by Jennifer Wilkie. Congratulations to all these ladies.

Moving on into May, we enjoyed another full house when Andrew McIndoe was once again our



wetted enough to encourage some of our lady members to form a group.

We will be running a bookstall again and would welcome any offers of books. It would be appreciated if anyone having books to offer, could retain them until nearer the date or even deliver them to the Village Hall on the morning of the show. Other than that, pray for good weather and come along in droves.

At our last A.G.M. we discussed our disappointment with our local newspaper over the reporting of our Flower Show. Other events in the area do appear to receive better coverage. In the past for example, a photographer would arrive in time for the prize giving. This has now not happened for several years. Also, despite reports being delivered to the office in Romsey soon after the Show, they fail to appear in that week.

In fact, last year it was not published until 26 days after the event for reasons I still fail to understand.

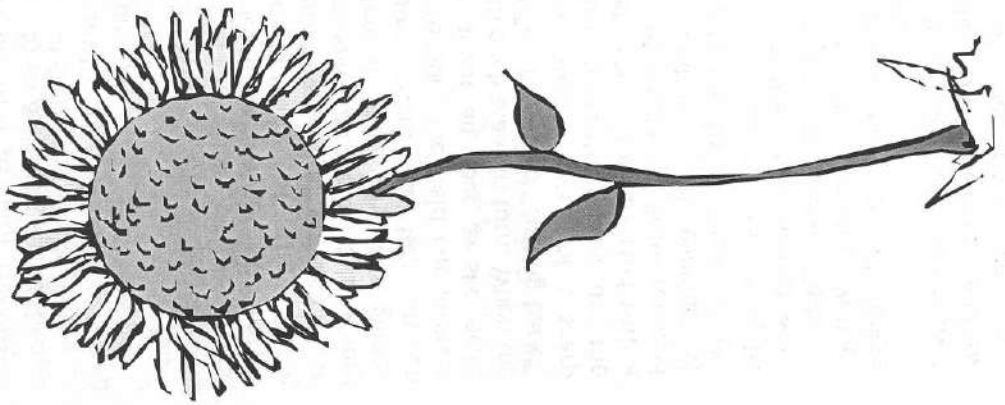
It has been suggested that letters from a number of our members, to the Editor, outlining our disappointment and requesting better co-operation, might help. Go on, have a go.

In August we all have a break until September 12<sup>th</sup> when our speaker will be Alan Edmondson who will trace the history of The Florists Flowers.

Until then, enjoy the summer, boost the entries in the Flower Show and ladies, give some thought to the belly dancing. They tell me that it is good exercise.

Have fun.

Bob Thomson  
BHS Secretary & Scribe



## DAIRY BARN FARM SHOP

North Houghton, Stockbridge, Hampshire, SO20 6LF

Tel/Fax 01264 811405

Now open Tues to Sat 9.30 am to 6 pm

Webpage [www.dairybarn.co.uk](http://www.dairybarn.co.uk)

e-mail [dairybarnshop@aol.com](mailto:dairybarnshop@aol.com)



### Mail Order & Delivery Available

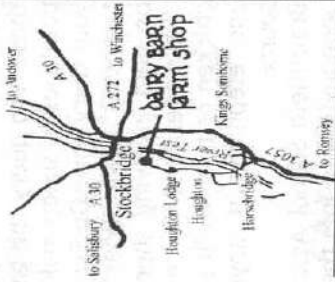
Recently received: - Hampshire Life Magazine's

"Best farm Shop in Hampshire 2004 award"

Rick Stein calls us his 'Food Heroes'!

We offer a real alternative to supermarket meat.

Come and experience our friendly service,  
our butcher is always happy to give you



## Hampshire Life's Best Farm Shop 2004

## Food For Friends

We can cater for all  
your needs at  
Weddings and  
Celebrations, Drinks  
and Dinner Parties.



We also offer a range of Home Cooked food  
for the freezer.

Sarah Keith  
01794 340707

Gayle Wilde  
01794 368311

## The Village Cricket Club

### Ever seen sheep race?

If you were at the village cricket club's Rooster Run in 2003 or 2004 the answer is yes, but for those who query the galloping capabilities of sheep make a note in your diary now. On Saturday, September 2, a third Rooster Run will be held involving sheep, ferrets, ducks, terriers, lurchers and a chicken or two. We'll race camels and elephants if anyone has a source.

Braishfield School Association has been invited to join the cricketers in raising funds on this unique occasion, and while final details are still melting in the pot, a car boot sale that would precede the racing looks a safe bet. In other words, don't put unwanted goods on e-bay for the next couple of months, but fill your boot on September 2 and help put some cash into the village school. Further details in the next issue of this magazine. Raising funds for the cricket club has become a priority after some

hefty expenditure totalling in excess of £2,000 - the perimeter boundary fence had to be replaced, a second-hand diesel tractor was needed to replace our temperamental petrol model, and a spate of spring grass cutting has seen fuel bills spiral.

Add in the man hours and it's a labour of love maintaining a cricket ground, but can anyone doubt the effort is worth it when you stroll down Dummer's Lane and witness this centuries-old sport taking place in such a lovely setting.

Special thanks are due to Ian Ross and Mike Ransom, who prepare the square, and also to James Light, the club captain, who has been rallying players after the winter recess.

One other date for your diary - on Sunday, July 9, the club hosts the annual Tap Room Trophy Tournament. We have applied for a drinks licence and there will be food and refreshments on sale throughout the day on this fundraising occasion.

### Donations for the Braishfield Village Association

We hope everyone enjoys receiving the Village News and the residents guide, hand delivered to nearly all houses in Braishfield and surrounding Hamlets.

Your help could make the village a better place.

If you would like to make a donation, please send a cheque payable to "Braishfield Village Association"

Many Thanks from The BVA Committee

## Small Business Accountant

Small Business and Self Employed Accounts  
Taxation and PAYE  
A Personal Low Cost Service

## Frank A Stokes

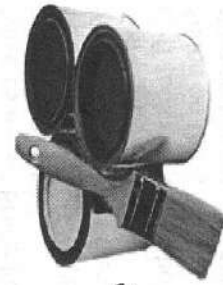
FMAAT

7 Newlyn Walk  
Cupernham Green Romsey SO51 7WB  
Tel/Fax:- 01794 523754

## Martyn Dennis

### Painter and Decorator

- Fully Qualified
- Interior and Exterior
- Over 10 years experience
- C.I.T.B. Registered



Tel:- 023 8026 9695 or 01794 501587

## Fun Pages—Confectionary quiz

Lets see who has the sweetest tooth in Braishfield

All answers are chocolate bars or sweets.  
Anagrams are in Capitals.

1. An assortment of clones
2. A big bang
3. Murms pub
4. Only the best in the neighbourhood
5. Maybe a loner
6. Just feelings
7. A watering hole that a Zebra should avoid
8. A game for Marco
9. Make these people very happy
10. As loved by Yogi
11. Like gravel underfoot
12. Not big, clever
13. Milky Way
14. Nutty gigglers
15. Our stars
16. Voodoo
17. Take a break
18. PEG ROBS POTS
19. Home assembly pet
20. Common in Las Vegas
21. They come from a Mediterranean Island
22. Wobbly kids
23. Bah
24. 'Give us a ----' Bruce Forsyth to Andrea Redfern
25. Like a pigs tail
26. Two items from the milkman
27. Younger siblings of one of those questions above
28. Ten Cents
29. Cliff took one on his hols
30. Found on the dessert trolley especially during the summer
31. 'Remember your manners and don't -----'
32. We have these on special occasions
33. Often found in the percussion section
34. Have these as a reminder
35. Often seen on November 5<sup>th</sup>

36. For your nearest and dearest on Valentines
37. Little Terrier
38. No zips in this packet
39. Mixes wells at parties
40. The middle letter of this Dutch airline can SERVE all.
41. Airborne
42. This bog isn't high
43. A price on your head
44. Art of conversation
45. Common vehicle driven in a raincoat
46. complete cashew
47. fizzy water overflows
48. Belongs to a rap singer
49. This man likes his sweet fruit
50. Children's fiction character 'King ----'
51. Found in mouths that moan
52. Masticate it
53. Tennis ace Andy makes a ----
54. Fizzy beverage container
55. Multi coloured decorations in her hair are wet
56. The final of these 2 fingers end in a kiss
57. space keeps its word
58. EORA
59. Cilla Black was once one of these
60. Found in a kings court
61. citrus MUGS
62. What does the lady love?
63. find these down an alley
64. A planets happiness
65. tiny SOHER

Answers will be published in the next issue of The News  
If you want to submit your answers, the top scores will also  
be published.

We can send a word based version of this for completion.  
Just send an e-mail to [news@mikopy.com](mailto:news@mikopy.com) with the subject  
sweet tooth

Could you fox the residents of Braishfield?  
Please send me YOUR quiz for future fun pages.



## Braishfield Parish Council Notes

This report on the Parish Council covers the Parish Council's meetings held on 28<sup>th</sup> March and 25<sup>th</sup> April 2006. Also held on 25<sup>th</sup> April was the Annual Parish Meeting which is not a Council Meeting, but is a meeting of Parishioners. For information, an Annual Parish Meeting is a requirement of the Local Government Act 1972 but is not quite separate from the Parish Council as the Council Chairman must chair it if he/she is present.

The next meeting of the Parish Council is on the 23<sup>rd</sup> May and this will be the Annual General Meeting of the Council. This is a slightly grandiose title for the May meeting because the only difference between it and any other is that the Chairman and Vice-Chairman are elected for the coming year. In an election year the AGM is the first meeting of the new Council. 2007 is the next election year but it is just possible that HM Government might defer this because of the review it is conducting into local government. Its aim appears to be to combine the functions of the District and County tiers of local government into a 'Unitary' authority as happens in Southampton, for example.

However, it is just possible that we might have an election in Braishfield before all that owing to the resignation from the Council of Mandy Payne. Mandy has been a

very active and well-regarded Councillor since May 1999 but is now leaving the village. The Council expressed its thanks for all the work Mandy has done during her time on the Council.

Whether or not there is an election to replace her depends on you the electorate. At the time of writing there is a notice on the board asking if there are ten electors who wish there to be an election and we will know by 26<sup>th</sup> May if a successful application has been made. Of course it would then require more than one candidate for an election to be held. If there is no call for an election, the Council will be invited by the Test Valley Returning Officer to fill the post by co-option.

In truth, these two months have been relatively quiet on the Parish Council front with few items of exceptional interest. However, the presentation given by Jem Muselwhite to the Annual Parish Meeting on his proposals for a village shop attracted considerable interest. Over 50 villagers packed into the Committee Room and out into the lobby at the village hall to hear what he had to say. He is proposing to construct a shop and a tearoom on the site of the old telephone exchange opposite the end of Newport Lane. A car park would be constructed on adjacent Elm Grove Farm land. He had investigated the possibility of using the old shop which closed a few

years ago but this had not materialised.

He accepted that this would not be to everyone's liking as the land in question is specially designated in the Conservation Area document for Braishfield. However, it was a case of whether or not the village wanted a shop. It would be his business and the inclusion of a tearoom was intended to assist its viability. As it would be his business, he declined to answer financial questions and concentrated on the 'planning' aspects of the proposal.

Many people were enthusiastic but of course a number of concerns were expressed which, for the most part, were accepted.

On a historical note, I see from the Council minutes of 1975/6 that Test Valley Borough Council was thinking of asking the GPO to demolish the old telephone exchange as there was no further use for it.

On planning matters, BKP has submitted an application for a 'gasification' plant at their Bunny Lane site. If successful after a year's operation, they would wish to install five such plants. This is a Waste to Energy system which effectively roasts solid organic matter (ie material containing carbon) to produce gas which is then used to power an electricity generator and also generate heat. The roasting takes place at a very high temperature in order to prevent the formation of those

nasty chemicals we hear about such as dioxins. The concern is that the system may use objectionable materials such as tyres.

This would not be a small scale operation as it is intended that each of the five systems would burn one tonne an hour. BKP argued that reducing material to landfill is Government policy, but then so is reducing carbon dioxide to the atmosphere.

The BKP application was less than convincing, making claims that there would be no emissions. Even the publicity attached to the application made this claim, but two pages on there was a diagram which showed a flare stack. Anyway, the Council objected to it and considerable concern has been expressed in the village which made its way into the Romsey Advertiser. The latest news is that the application has been withdrawn but it is not known if the whole idea has been dropped.

Another application which the Council considered was that for an extension of the garden of Meadow View in Newport Lane to run along the rear of adjacent properties. After quite some discussion on the matter and consultation with Test Valley, the Council decided to object but left the door ajar if there was a way of preserving the amenity of adjacent properties. It is believed that there is a general concern within the TVBC Planning Department about the loss of countryside.

The Planning Authority dealt with a number of applications as follows:

HCC TV066	RFS Farms, Bunny Lane	Waste Management Centre	Permission
06/427T	Elm Grove Bungalow, Dummer's Road	Tree work	No objection
06/971/TPOS	Wyndhams, Braishfield Road	Fell fir and cypress	Permission not required
06/806/T	Orchard Hill, Braishfield Road	Tree works	Permission
06/708/F	Wyndhams, Braishfield Road	Erection of summer house	Permission

The Council received a number of planning applications and responded to TVBC as follows:

6/1117/F	Braishfield Lodge, Paynes Hay Road	Erection of 1.8m wall	No objection subject to Conservation Officer's approval
6/1131/CMAS	BKP, Bunny Lane	Gasification plant	Strong objection to a R&D facility and very incomplete information about pollution, flare stacks etc
6/989/F	Land at the rear of Meadow View, Newport Lane	Change of use from countryside to domestic	Objection to loss of adjacent properties
06/971/TPOS	Wyndhams, Braishfield Road	Fell fir and cypress	Subject to the Arboricultural Officer's views - no objection
06/837/F	Braishfield Manor, Paynes Hay Road	Alterations	Subject to the Conservation Officer's views - no objection
06/806/T	Orchard Hill, Braishfield Road	Tree works	No objection
06/708/F	Wyndhams, Braishfield Road	Erection of summer house	No objection

## Braishfield in the Beginning

The following extracts are from the early Parish Council Minutes researched by John Rhodes, the current Clerk to the Council

17<sup>th</sup> November 1975

It was reported that the Braishfield 250+ Club had requested that the repayment of the loan of £100 due in November be deferred until January or February. The Council decided that the payment should be made immediately.

Recreation Ground. The Clerk reported that the play equipment had been ordered subject to the provision of a grant. The Instructions to deliver and commence the erection of the play equipment would be given immediately grant approval had been given.

The Council considered three planning applications:

1. The erection of two dwellings on land adjacent to the Rectory. The Council opposed this application on a number of grounds
2. The construction of a gas take station at the old Council tip Bunny Lane. The Council thought that the information which had been provided for this application to be insufficient and the Clerk was asked to find out more details.

The Clerk read a letter he had received from a Mr Freckleton together with his reply enquiring from the Council why they had given financial support to the new pavilion. The Council approved the Clerk's action. It was decided to write to the 250+ Club and ask them how many people living in the village played football on the recreation ground..

AOB. It was decided to write to the Test Valley District Council to see if anything could be done about the unpleasant smell in the vicinity of Mrs Masters shop.

22<sup>nd</sup> December 1975

3. The old GPO site. The Divisional Planning Officer had asked the Council if they would agree that this building had no use whatsoever. If this was the case the Planners were to write to the Post Office and inform them that in their opinion the Old Telephone Exchange should be demolished.

The clerk reported that he had received a letter from the Divisional Surveyor suggesting that the new noticeboard was erected outside the school behind the new seat. The Council approved this suggestion.

## Braishfield in the Beginning

*Continued*

Mrs Sleeman told the Council that she had received some complaints regarding the use of helicopters from Fishponds Farm. The Council decided that this was not within the Parish of Braishfield and that this should not therefore be a matter for them to discuss.

19<sup>th</sup> January 1976

The Clerk read a letter he had written on behalf of the Council and also Michelmersh Parish Council direct to the British Gas Corporation in Derby regarding various matters relating to the proposed gas take-off station at the old Council tip at Bunny Lane. After hearing various comments the Council decided that they would no longer oppose the application providing that the noise aspect fully satisfied the Environmental and Health Department.

Mr Lowman wondered whether it was possible for something to be done to the kerb adjoining the War Memorial as this was being continually damaged. The Council decided to write to the Divisional Surveyor and seek his advice.

It was also decided to write to the Hants & Dorset Bus Company to ask them why the 6.45 bus did not go to the Manor and why it

spent some time parked in the Main Street.

The Chairman reported on the recent meeting of the Test Valley Association of Parish Councils:

He also reported on the proposal put forward by Braishfield Parish Council that more consultation be had with the Parish Council prior to the allocation of Council houses. At the first vote the motion was lost 13-26 but after it was decided that some people who voted should not have done the motion was carried 11-8.

The Council decided to take up with the Test Valley District Association of Parish Councils the question of a large number of empty cottages in the countryside which could provide homes for the homeless.

23<sup>rd</sup> February 1976

It was reported that the Environmental Health Officer had been in touch with the Clerk noting the Council's consent for the go-ahead for the proposed gas sub-station providing that he was satisfied in all aspects regarding noise. The Chairman, Mr CH Bartlam, said he had been down to a similar plant at Ilchester and that he was satisfied that there would be no noise,

no smell. The site occupied about 5 to 6 acres and he thought that the proposal at Bunny Lane would be acceptable. Mrs Sleeman said that further enquiries were being made regarding subsidence but the gas corporation were intending to pile through the deposited material to the solid ground below.

The Clerk reported that he had still not heard from the Southern Water Authority regarding low pressure of the water supply at the northern end of the village.

The Clerk read a letter from the Hants & Dorset Bus Company explaining why the 18.45 service from Braishfield to Romsey started at the War Memorial and secondly why the buses were making the habit of parking in the

main street. Mr Cobbold thought that it was wrong for the Council to raise this matter as the village has an exceptionally good service which we were very lucky to have.

Recreation Ground. The clerk reported he had heard from the Hampshire Playing Fields Association approving the application for a grant for the proposed play equipment. The grant amounts to 1/3 of the estimated cost of £500, subject to the usual conditions.

The clerk was instructed to arrange a meeting with the contractor who is to clear the site and to notify as many members of the Council as possible. The equipment itself is now to be put on order.

Information on current Planning Applications in Braishfield and copies of current Parish Council Minutes etc, are available on the website:-

**[johnbrhodes.supanet.com/braishfield](http://johnbrhodes.supanet.com/braishfield)**

A Draft copy of the Parish Council minutes will be placed on the Notice board inside the Village Hall. Parish Council agenda will be placed on the outside notice boards at the Village Hall and on the corner of Common Hill Road and Braishfield Road





# Estate Agents

36 The Hundred, Romsey, Hampshire, SO51 1BX.  
Telephone: 01794 514455 Facsimile: 01794 518108  
Email: sales@michaelrhodes.co.uk  
www.michaelrhodes.co.uk

Selling Property in Braishfield and  
other Test Valley Villages

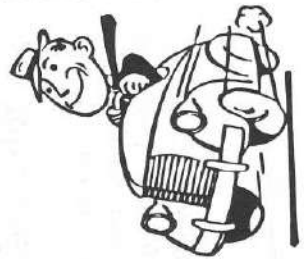
Tel:- 01794 514455 Fax:- 01794 518108

Website:- [www.michaelrhodes.co.uk](http://www.michaelrhodes.co.uk)  
E-mail:- [sales@michaelrhodes.co.uk](mailto:sales@michaelrhodes.co.uk)

View our Property List on line

## [www.AbbeyParkCars.co.uk](http://www.AbbeyParkCars.co.uk) Ben Holdaway

Genuine vehicles reasonably priced  
View website for latest stock



Unit C8  
The Premier Centre  
Premier Way  
Romsey SO51 9DG  
Tel:- 01794 830373

## KINGTON CONTRACTING

Property Maintenance  
(Residential & Commercial)

Painting & Decorating  
Tiling & Wallpapering  
House & Garden Clearance  
Window Cleaning

Fascia boards & Gutters Cleaned, Repaired & Replaced  
Ground Works & Drainage  
Plus many other areas of maintenance work carried out

Ben Kington  
Telephone : 01794 368536

## Barleywood

Garden Designs

A Professional Qualified Service  
Design to Completion

Alan Smith  
(Dip GD)

01794 368928